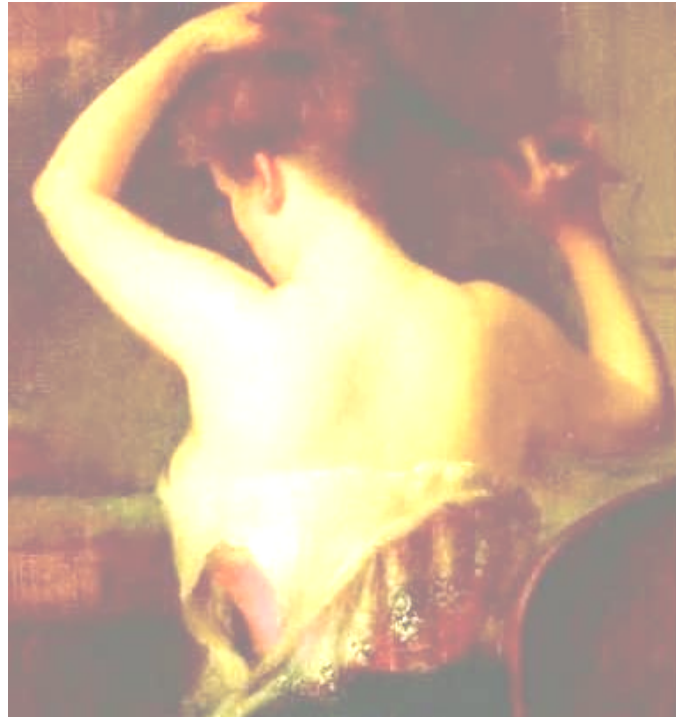


Why Censor Lady Chatterley?: Sex and Democracy in Japan after 1945

PROFESSOR ANN SHERIF
FRIDAY, OCTOBER 16, 2009
12:00-1:30pm
2103 TALIAFERRO HALL
UNIVERSITY OF MARYLAND



Lawrence, D.H. *Lady Chatterley's Lover*. Bantam Books; 1928 edition (1983).

Ann Sherif, Director of the East Asian Studies Program and Professor of Japanese Language and Literature at Oberlin College, has written extensively on modern Japanese literature and its intersection with politics and law. Most recently, she has published, *Japan's Cold War: Media, Literature and the Law* (Columbia University Press, 2009). Professor Sherif was a recipient of a 20th Century Japan Research Award (2007-2008) for research in the Gordon W. Prange and East Asia Collections. In addition to her talk on *Lady Chatterley*, she will also report on her research findings.

Free to the public
Refreshments will be provided.

Co-sponsored by the East Asia & Gordon W. Prange Collections, the Nathan and Jeanette Miller Center for Historical Studies, the Center for East Asian Studies (CEAS) in celebration of the 40th anniversary of the founding of CEAS (formerly the Committee on East Asian Studies) and the Department of Women's Studies.