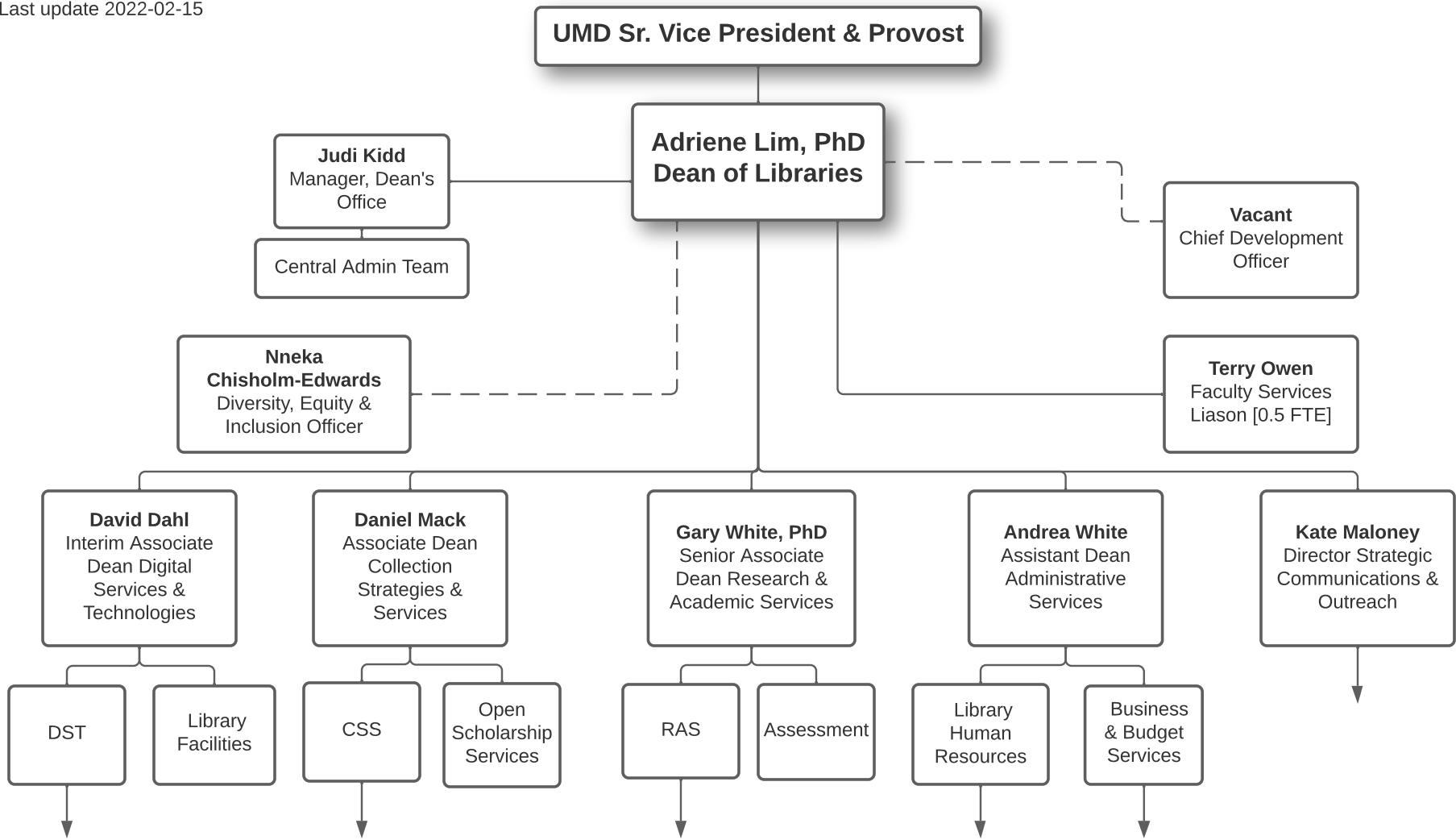


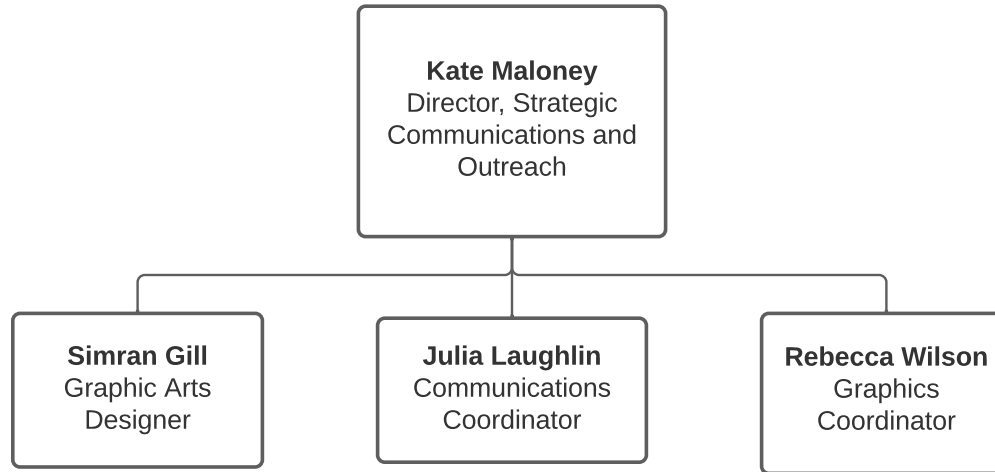
Charts showing Faculty,
PTK, Staff, and
Contingent 2
Last update 2022-02-15

University of Maryland Libraries Dean's Office and Library Administration

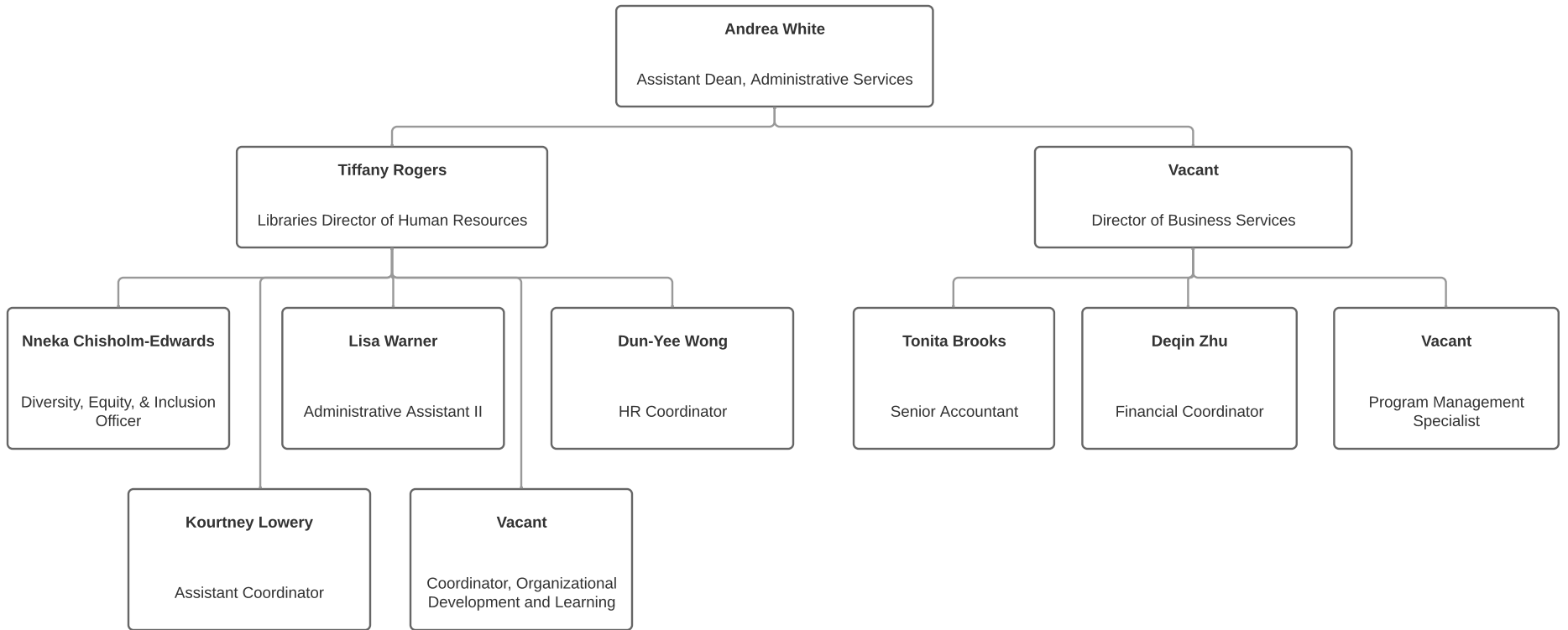


↓ = Organizational details
shown on other charts

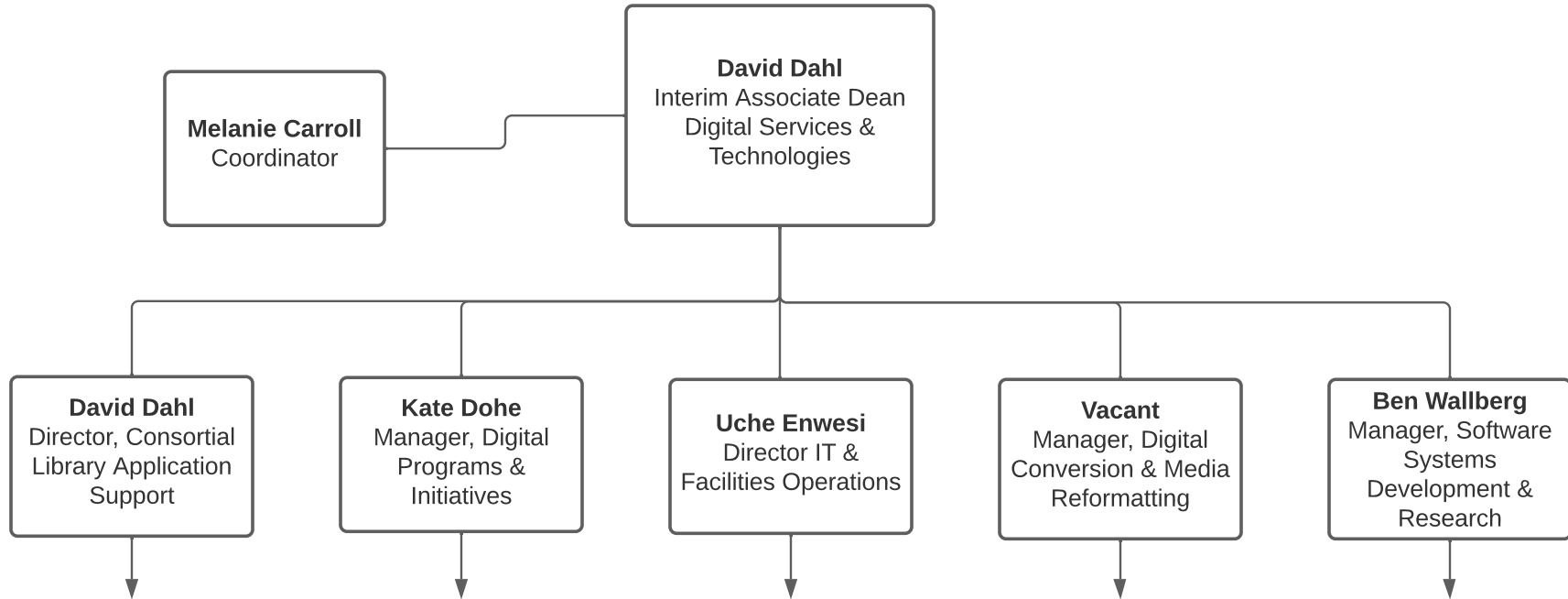
Strategic Communications and Outreach



Administrative Services Division [ASD]

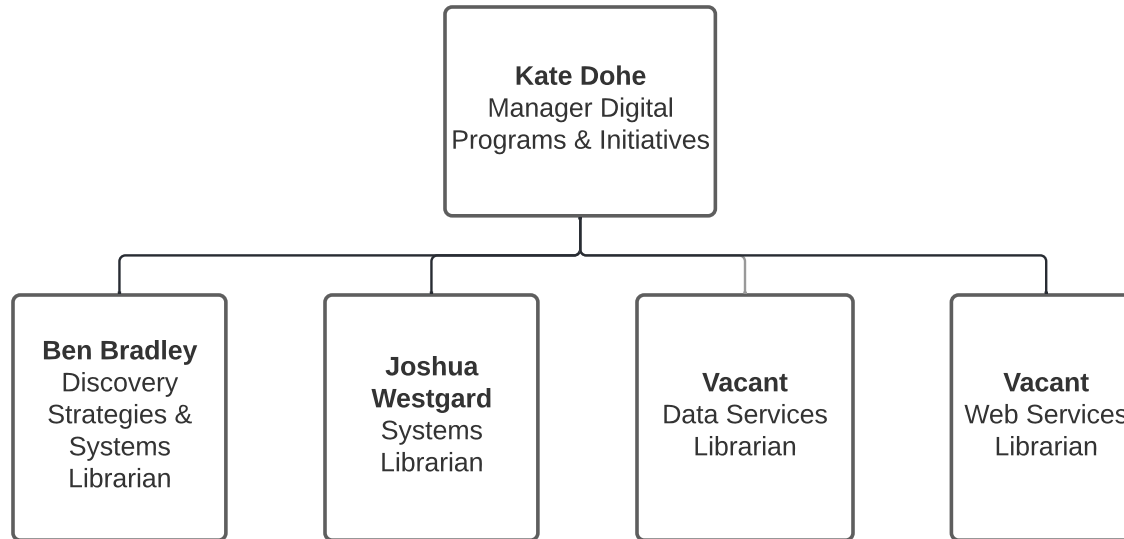


Digital Services and Technologies [DST]

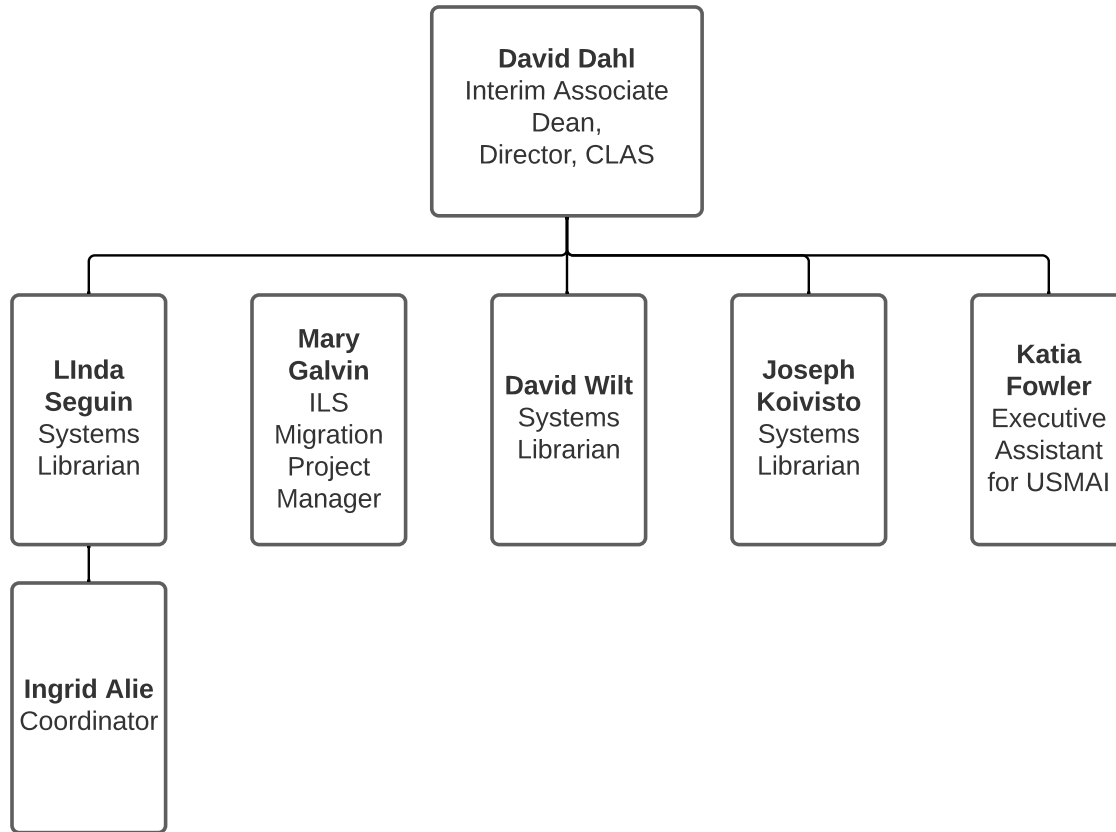


↓ = organization under staff member

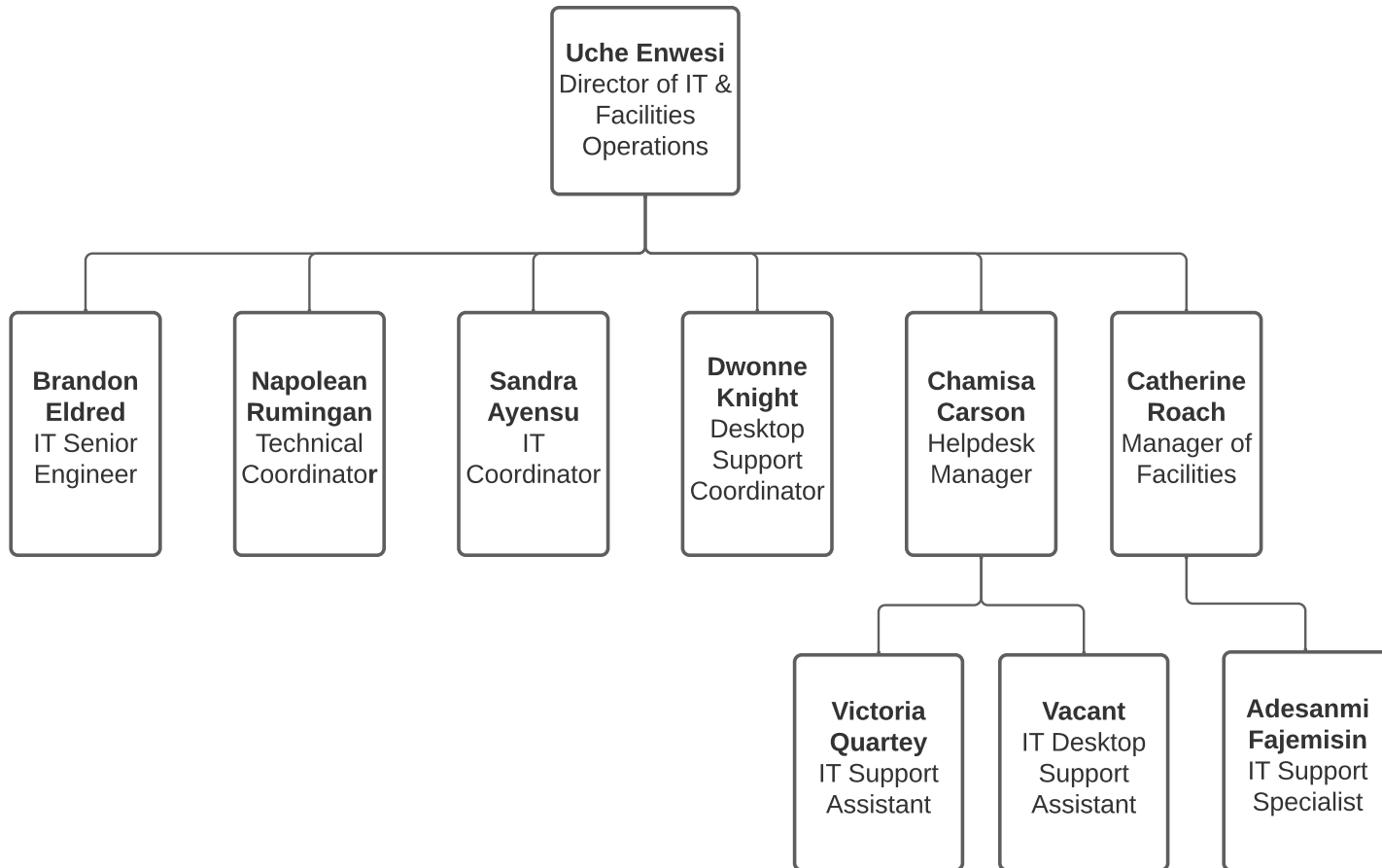
DST: Digital Programs & Initiatives



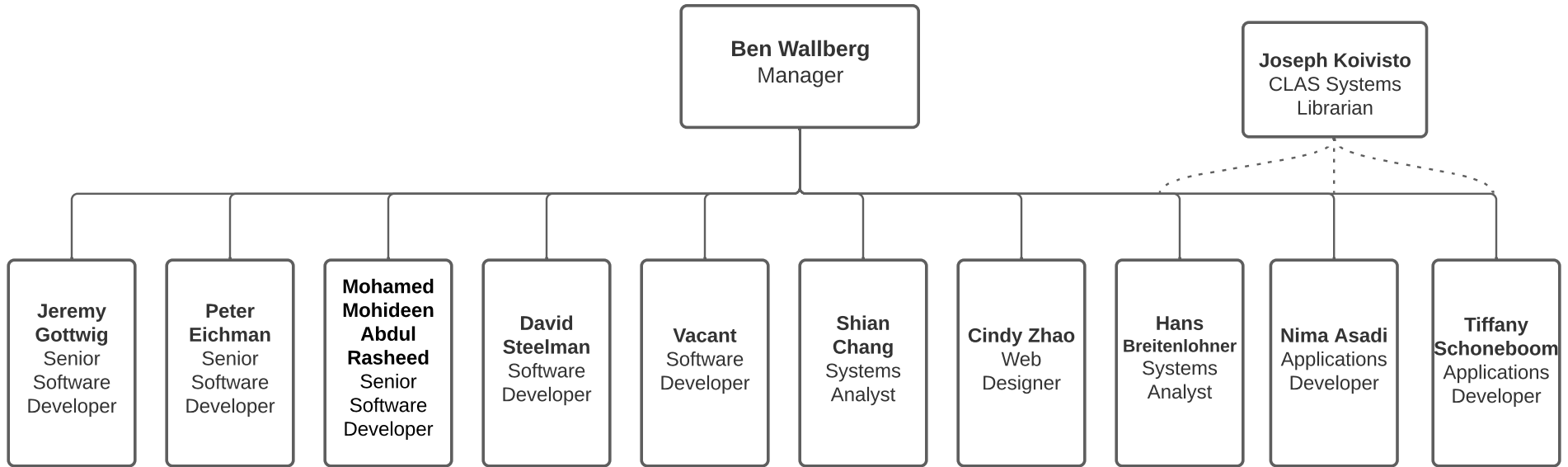
DST: Consortial Library Applications Support



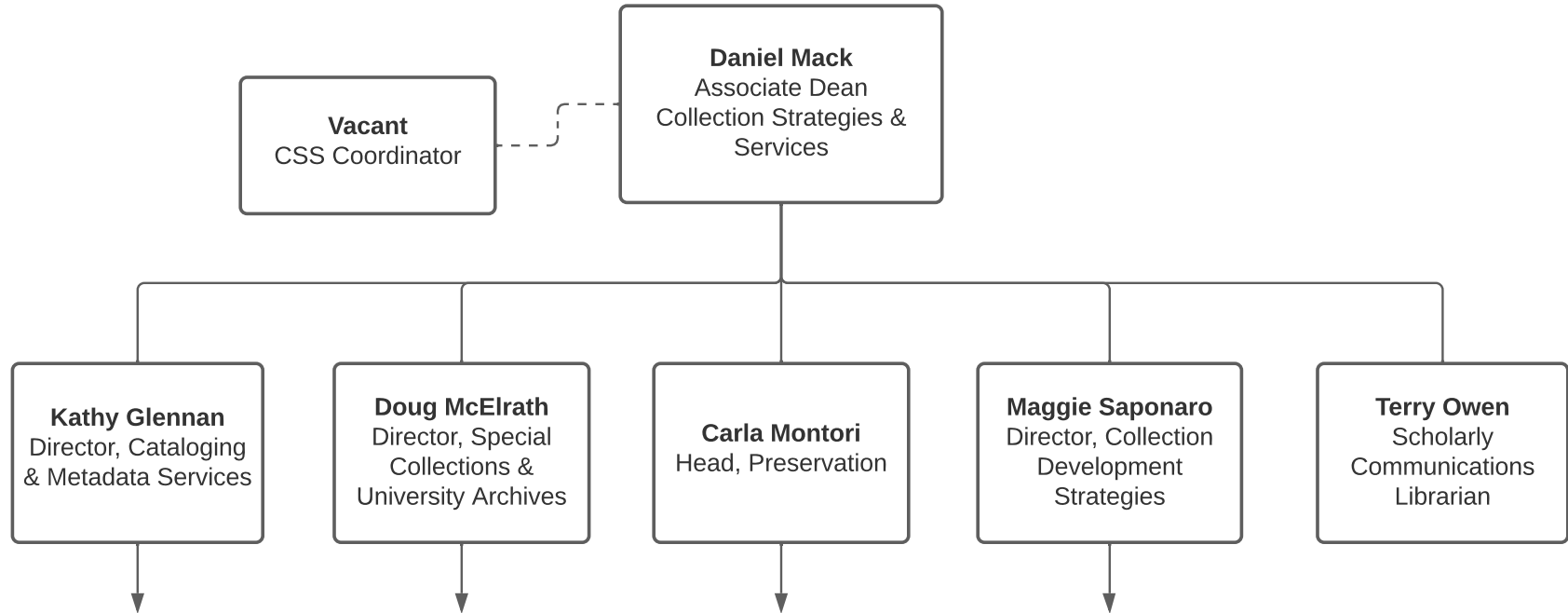
DST: User and System Support



DST: Software Systems Development & Research

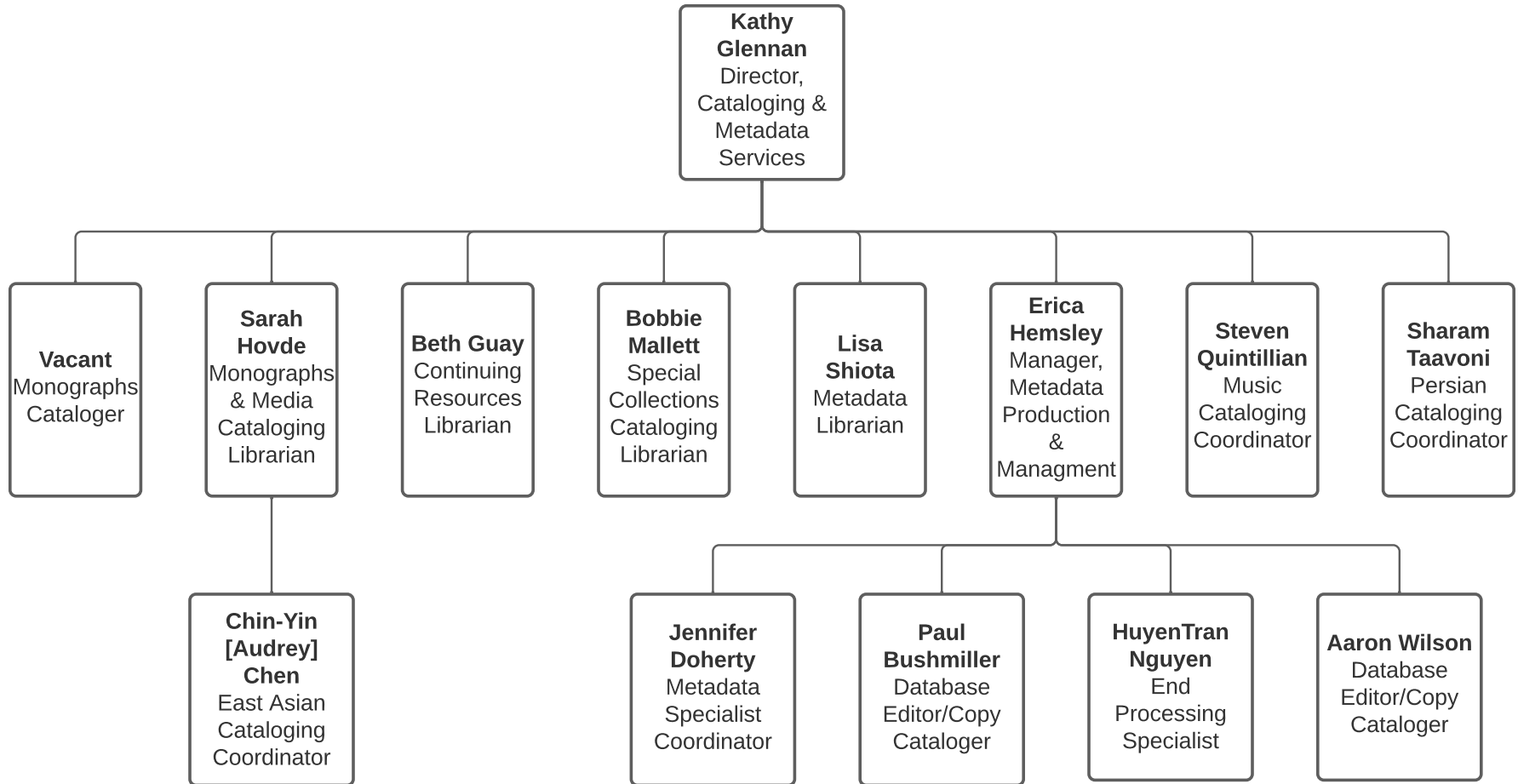


Collection Strategies and Services [CSS]

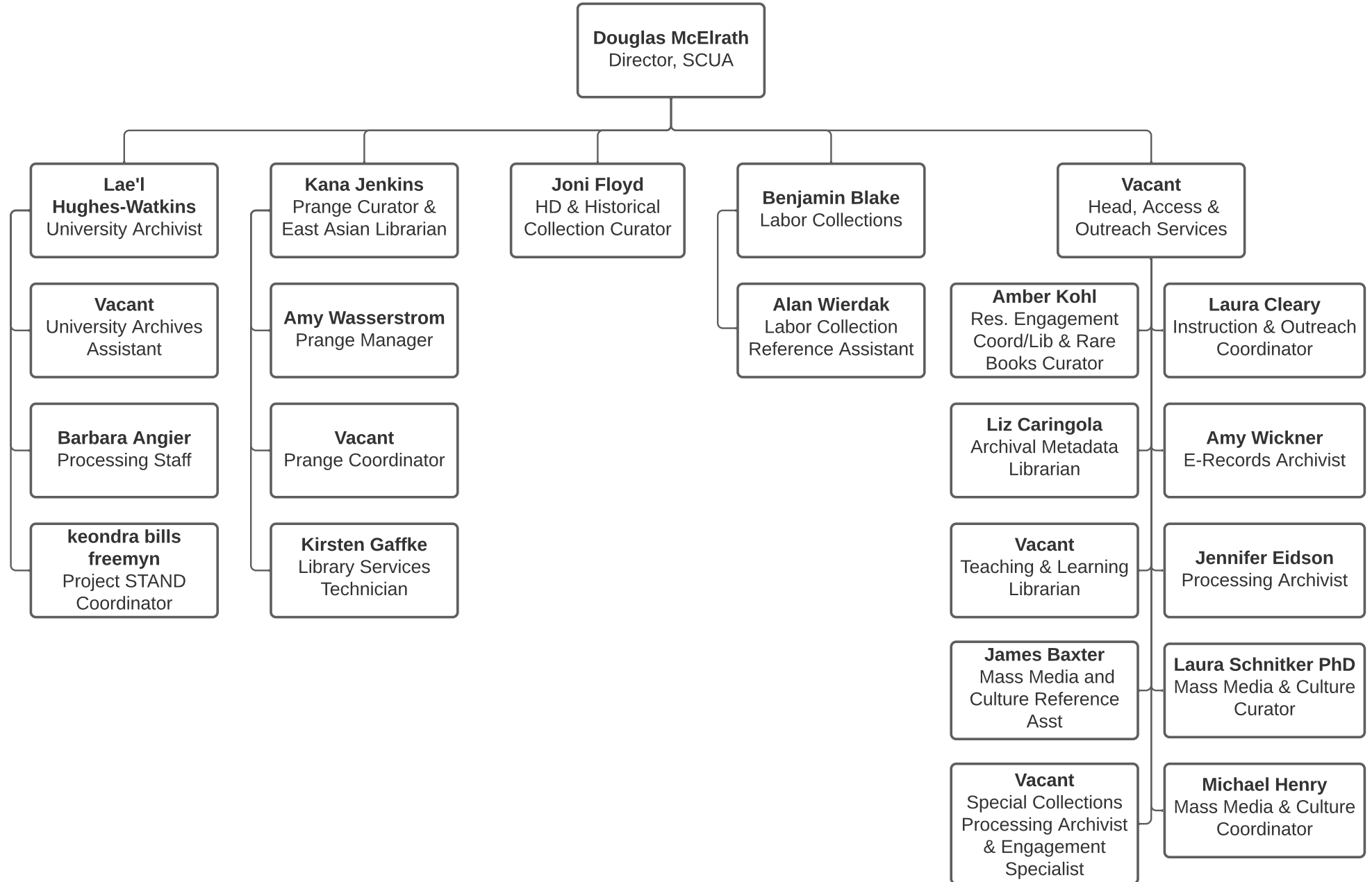


↓ = Organization under staff member

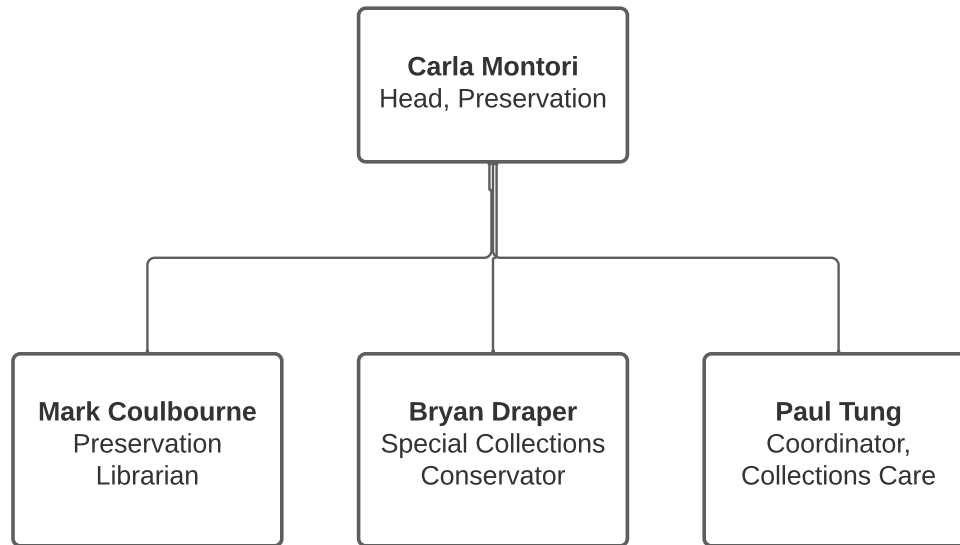
CSS: Cataloging & Metadata Services



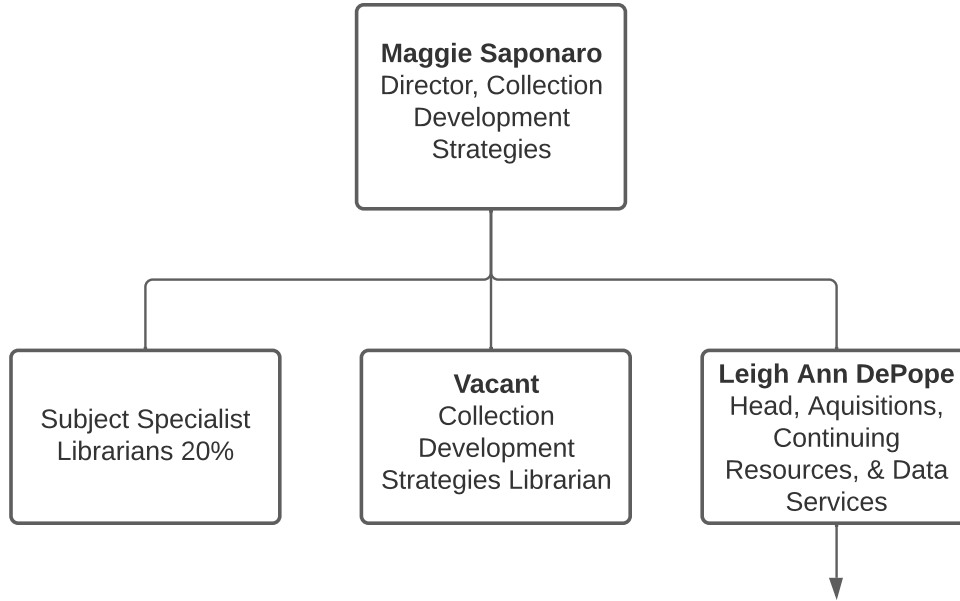
CSS - Special Collections and University Archives



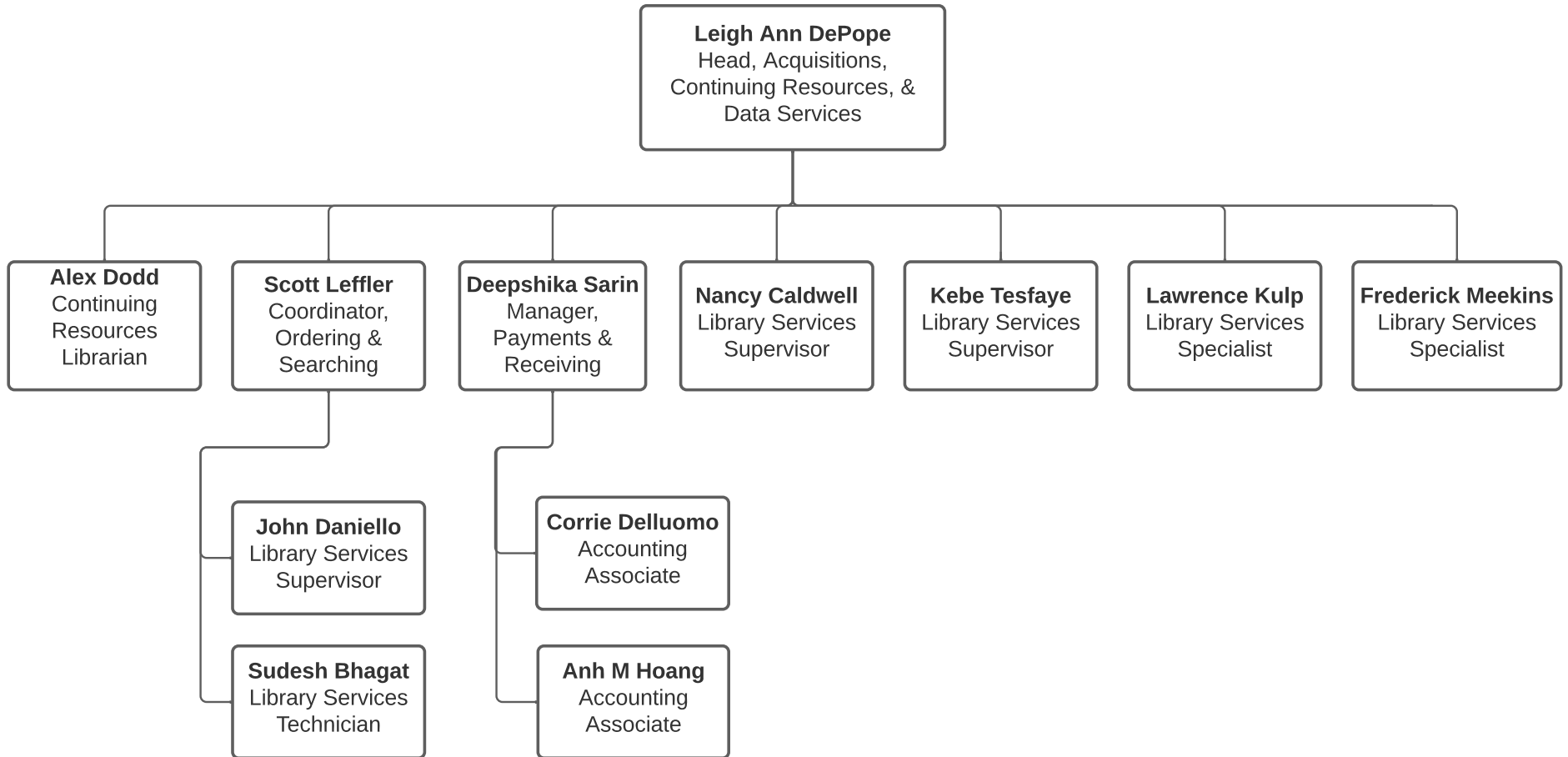
CSS: Preservation



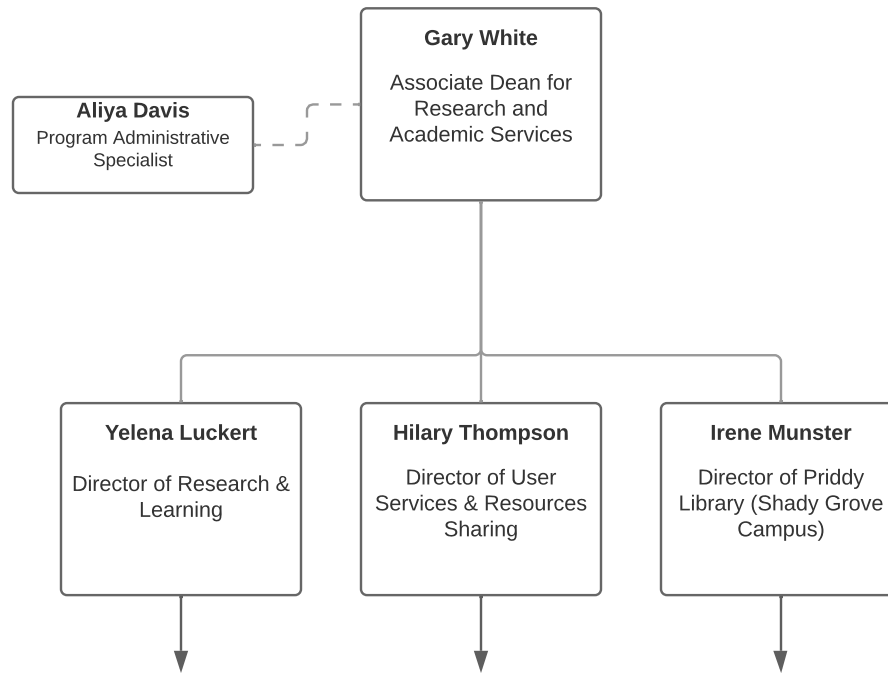
CSS: Collection Development Strategies



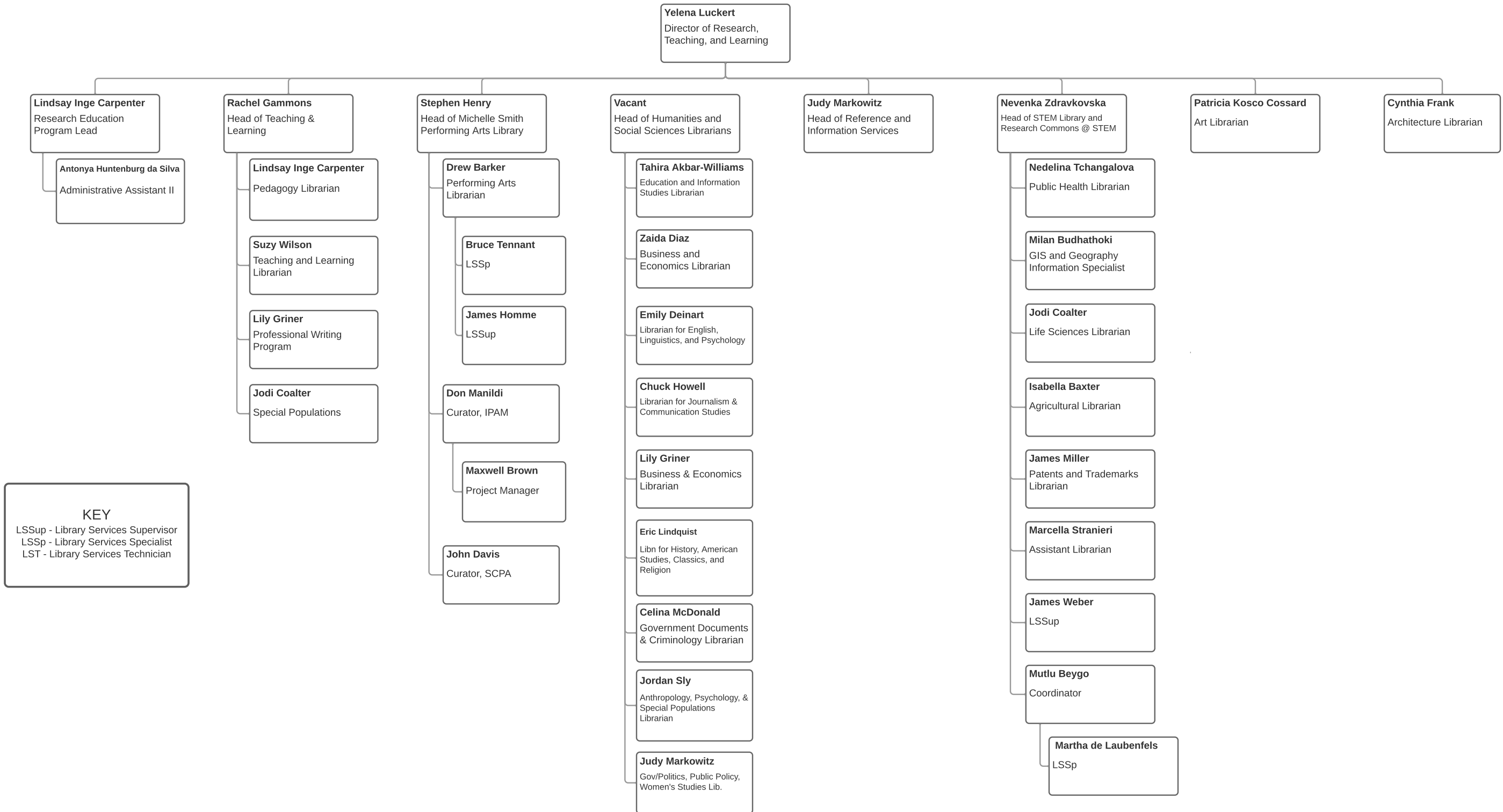
CSS: Acquisitions, Continuing Resources, and Data Services



Research and Academic Services [RAS]



RAS - Research Teaching and Learning



KEY
 LSSup - Library Services Supervisor
 LSSp - Library Services Specialist
 LST - Library Services Technician