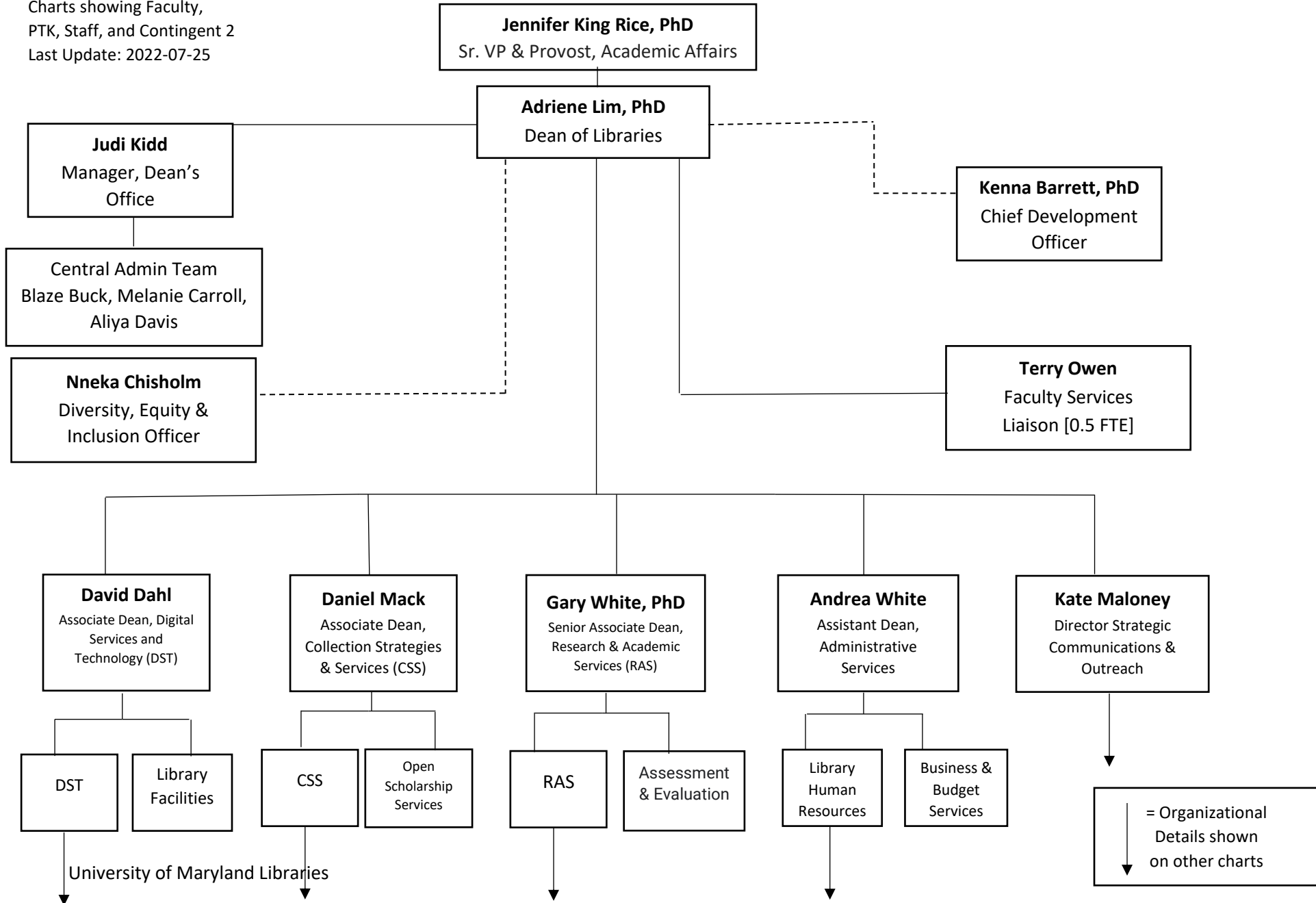


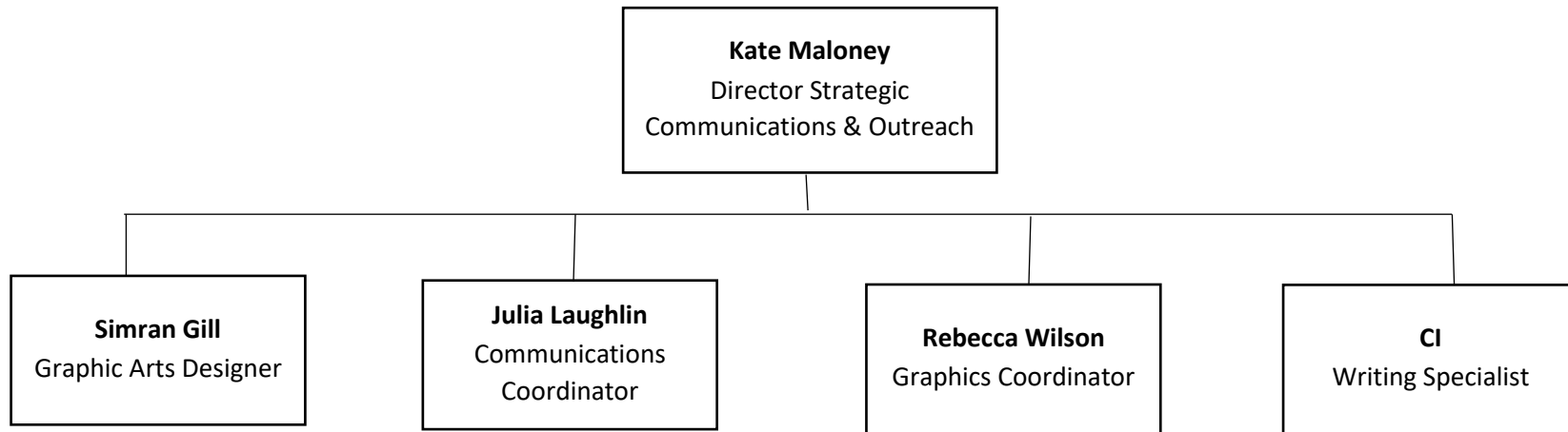
# University of Maryland Libraries Organization Chart

## Dean's Office and Library Administration

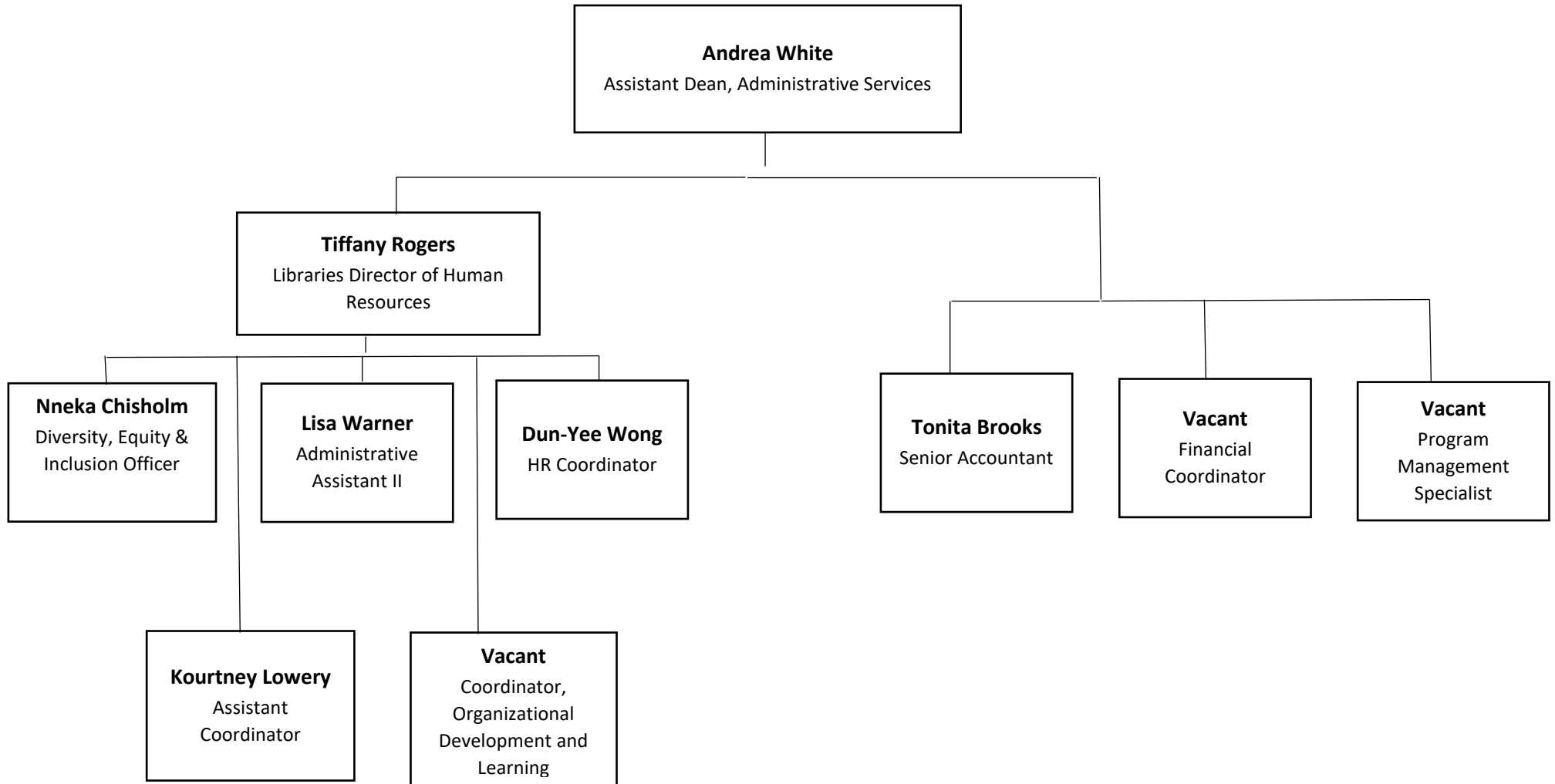
Charts showing Faculty,  
PTK, Staff, and Contingent 2  
Last Update: 2022-07-25



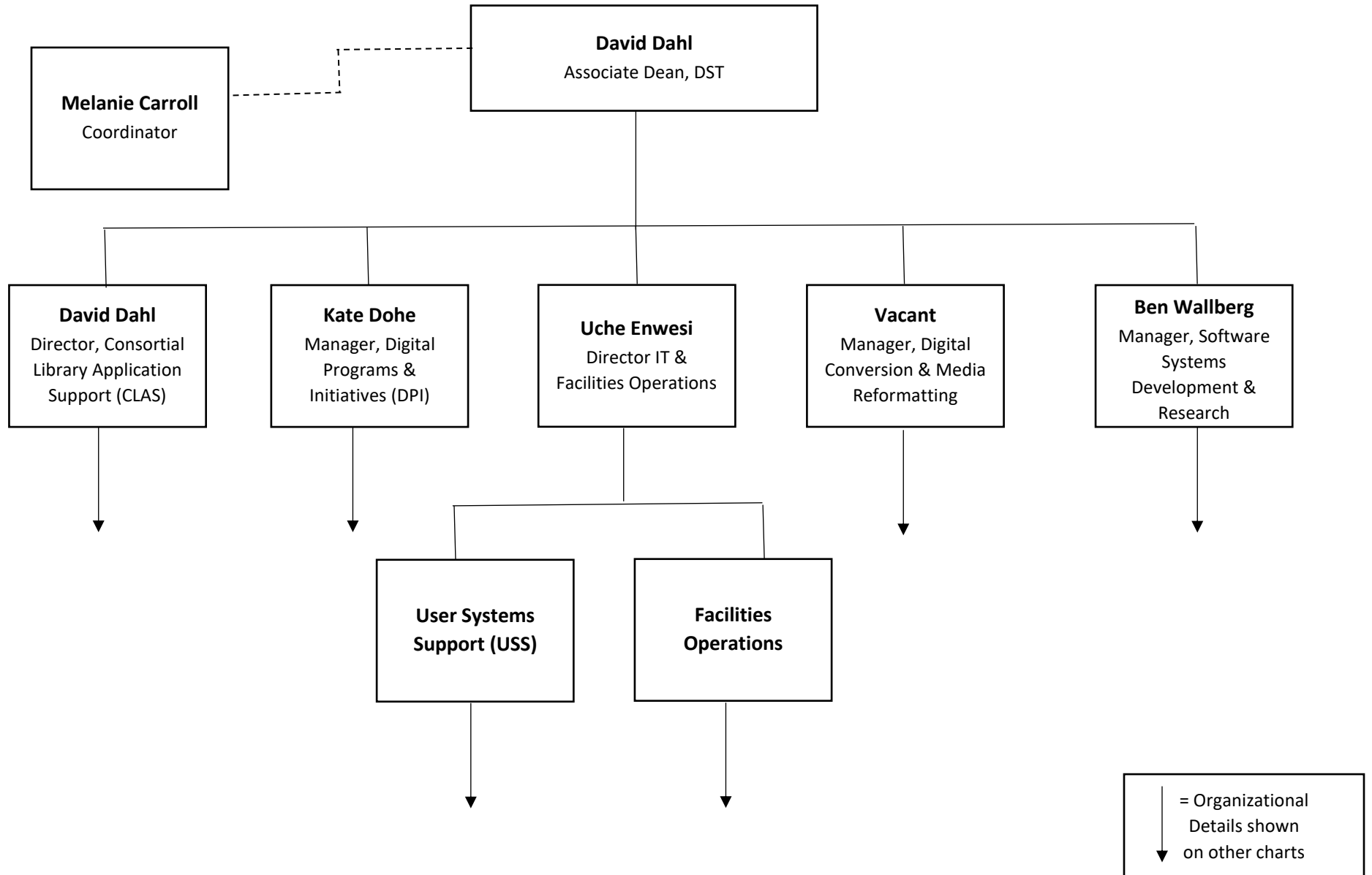
## Strategic Communications and Outreach



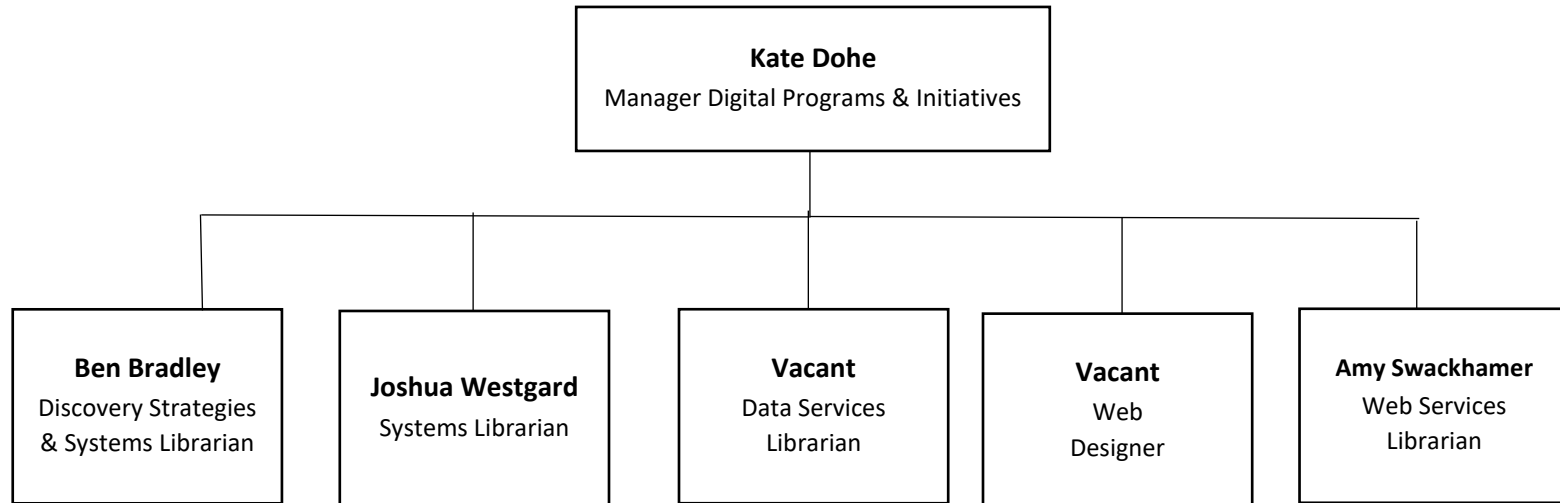
# Administrative Services Division [ASD]



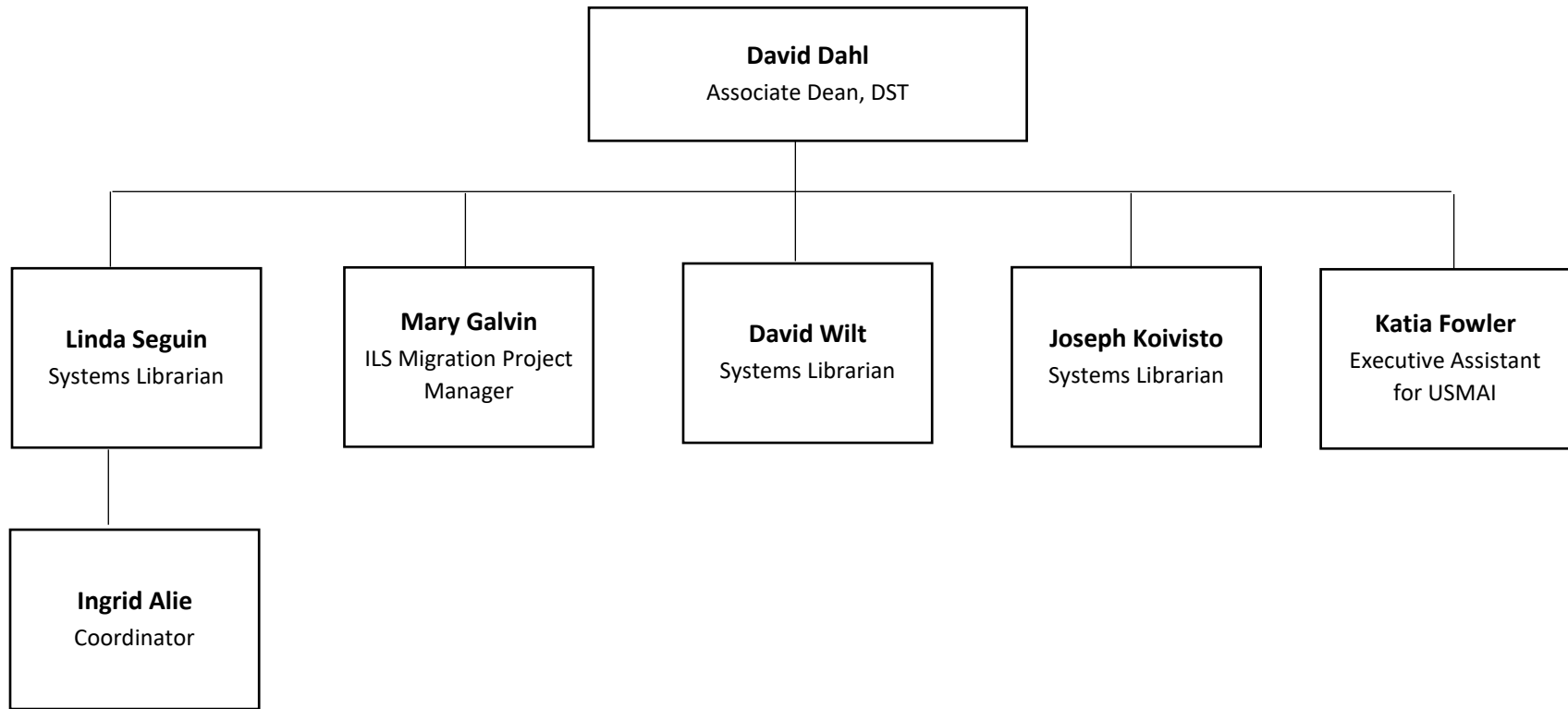
## Digital Services and Technologies [DST]



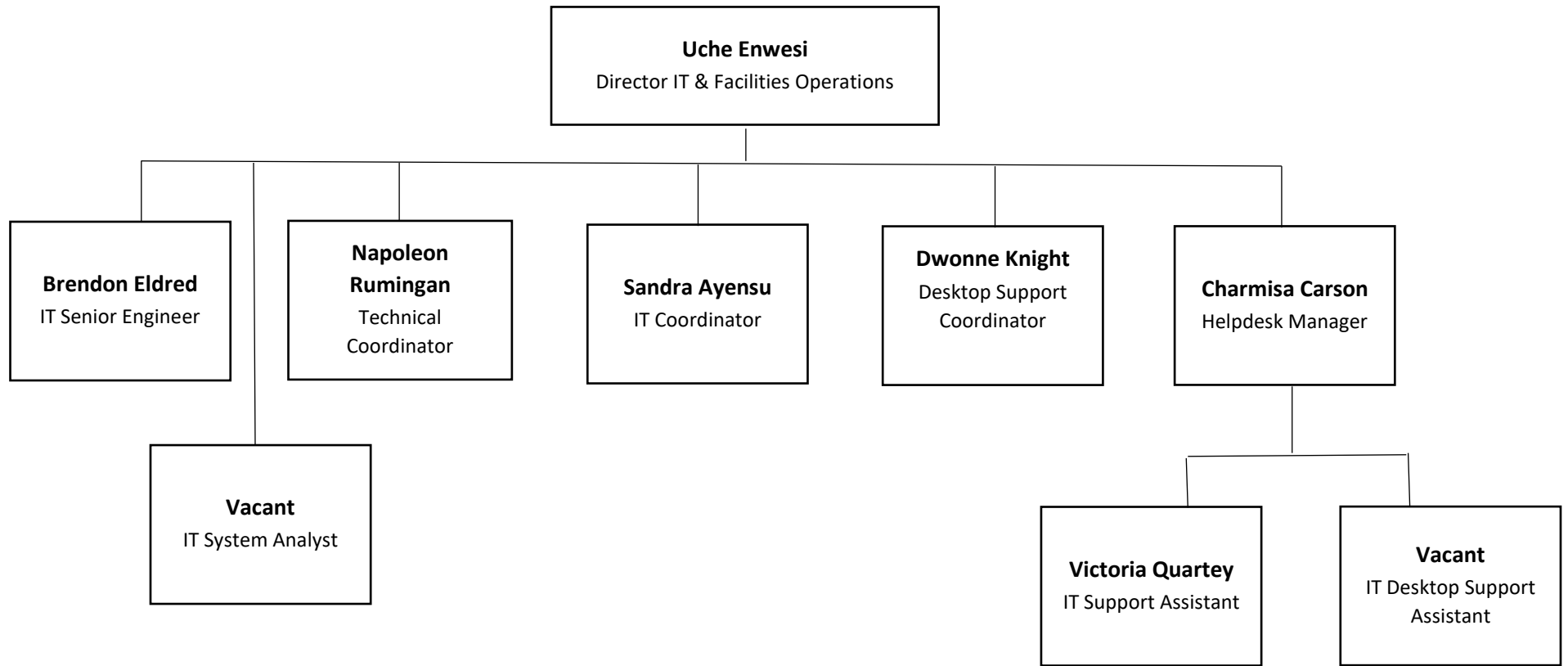
DST: Digital Programs & Initiatives [DPI]



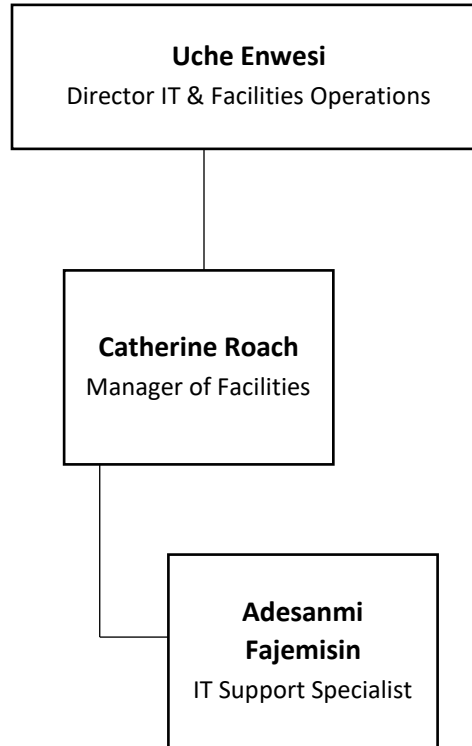
DST: Consortial Library Applications Support [CLAS]



DST: User and Systems Support [USS]

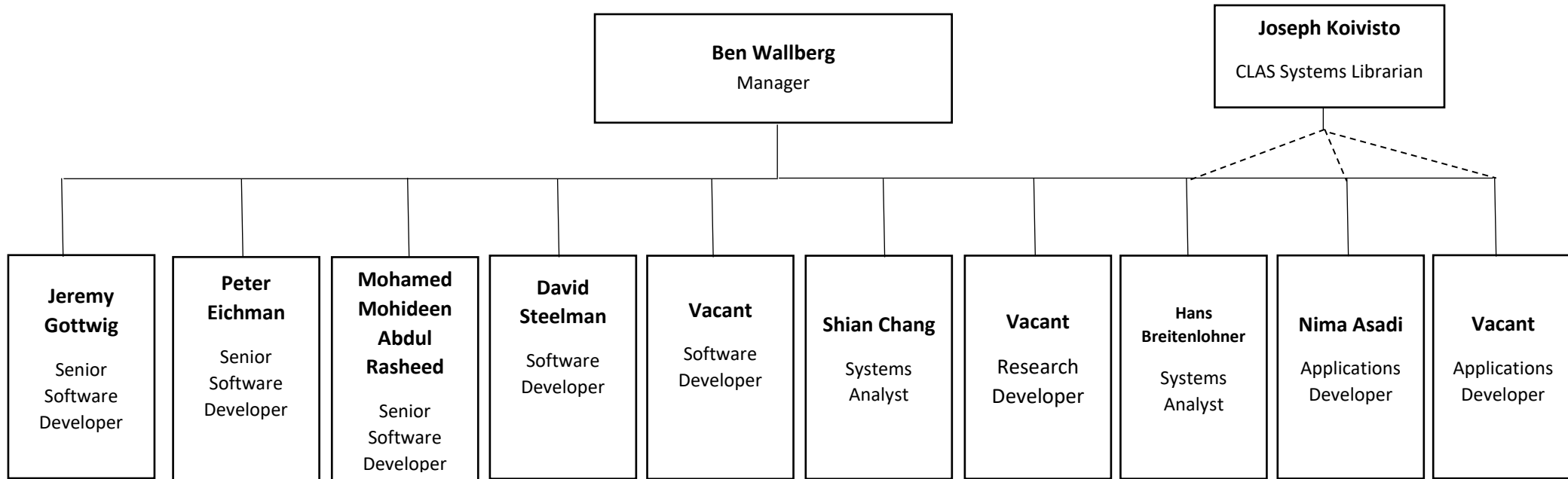


Library Facilities

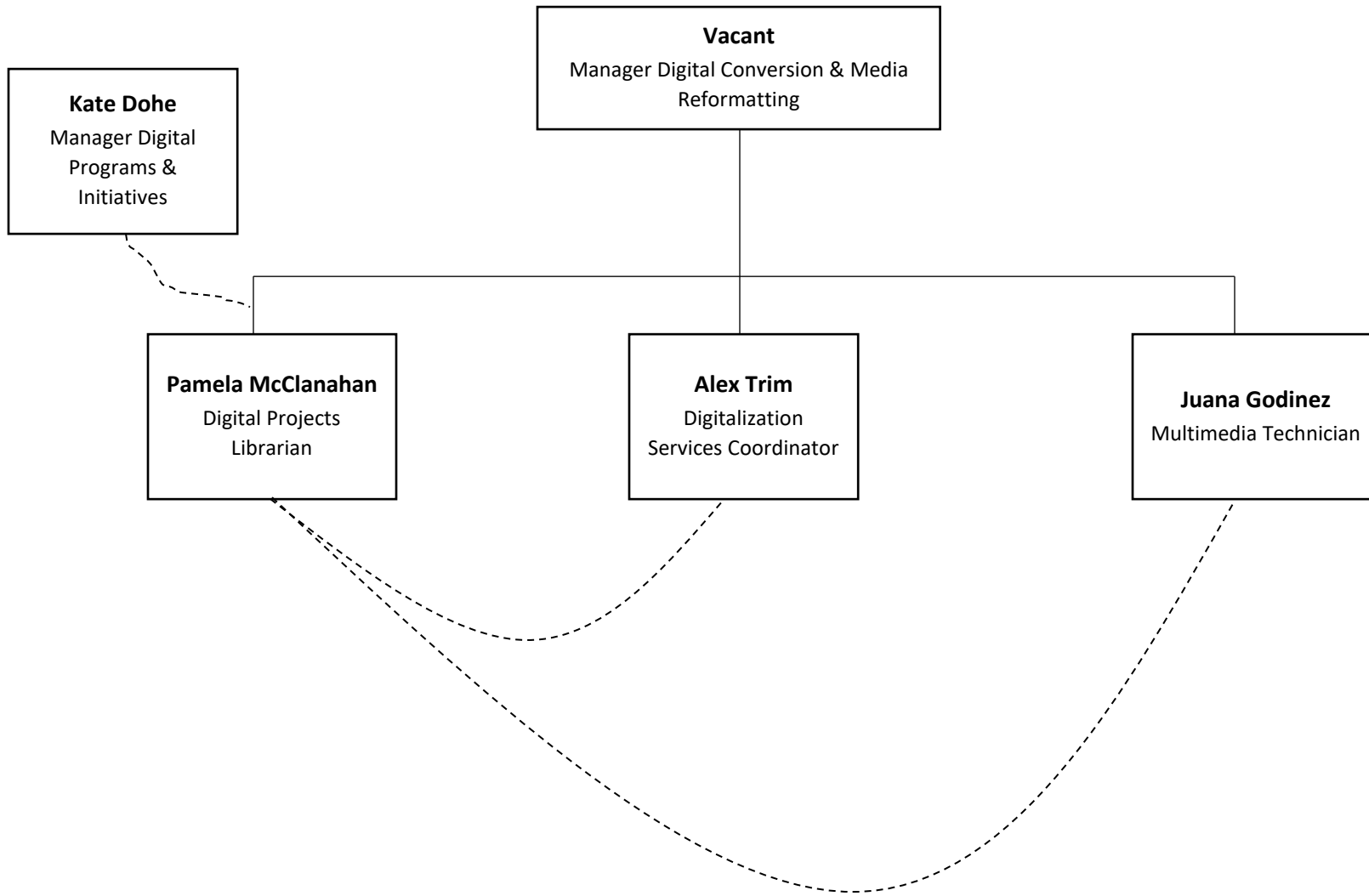




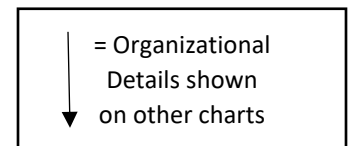
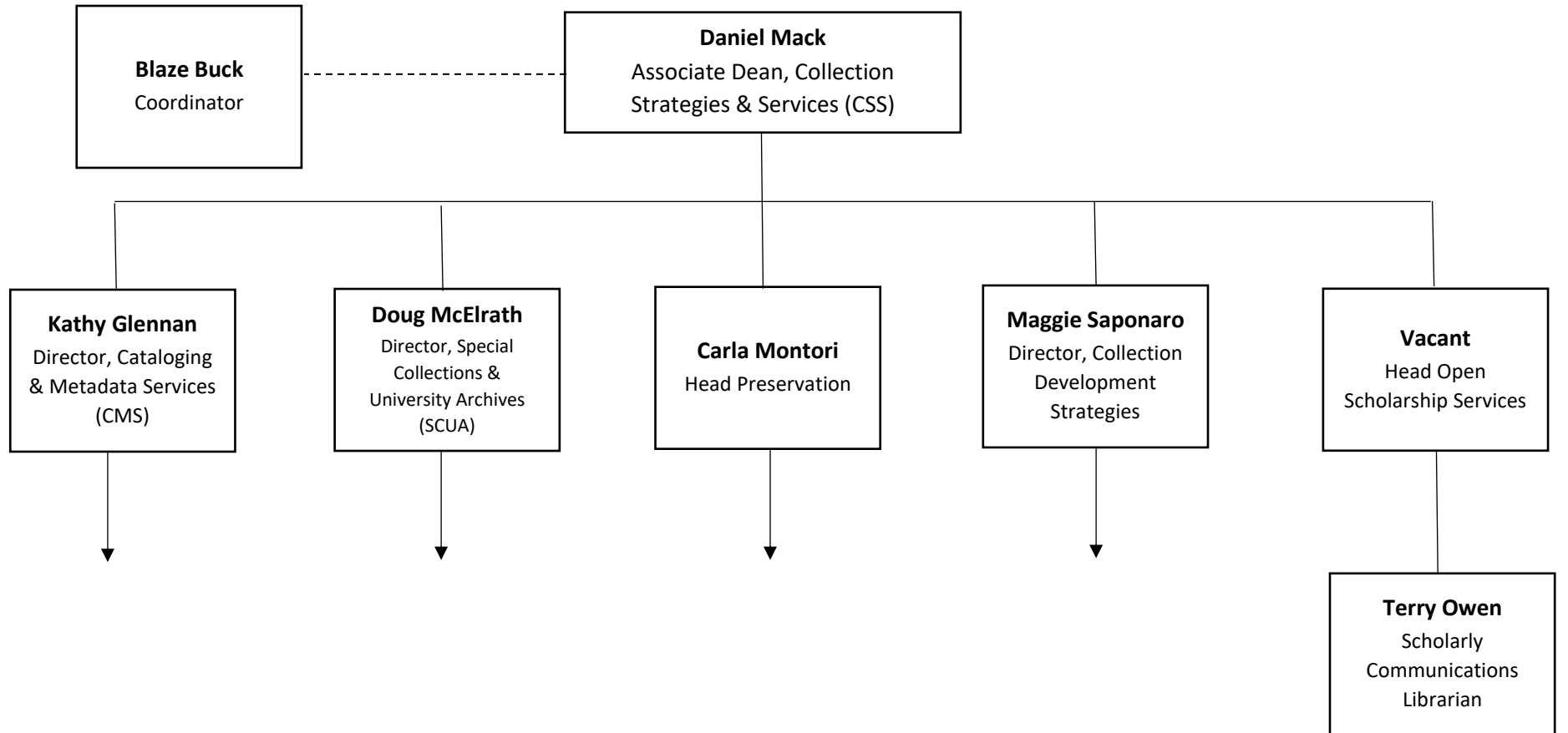
DST: Software Systems Development & Research [SSDR]



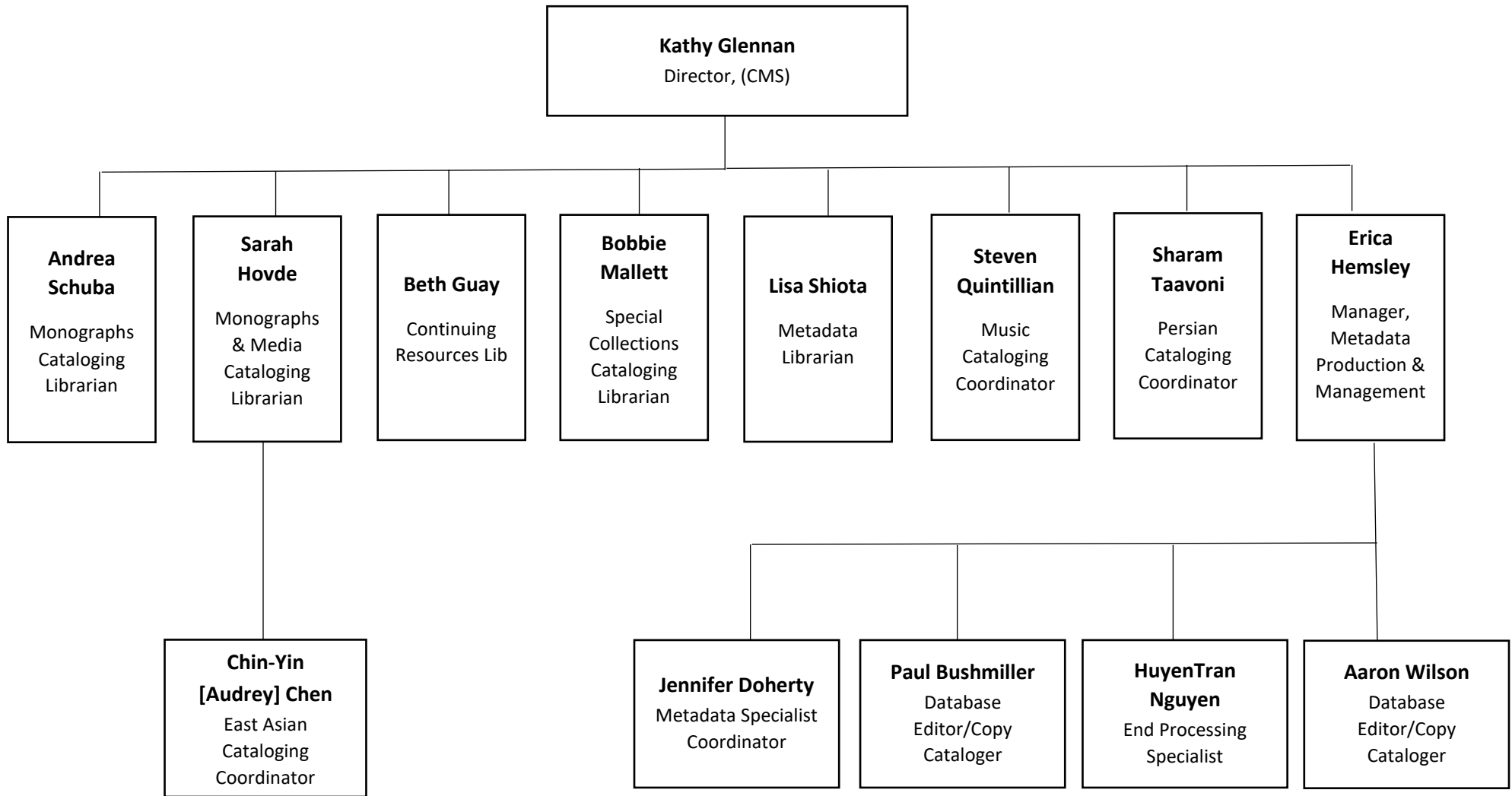
DST: Digital Conversion & Media Reformatting [DCMR]



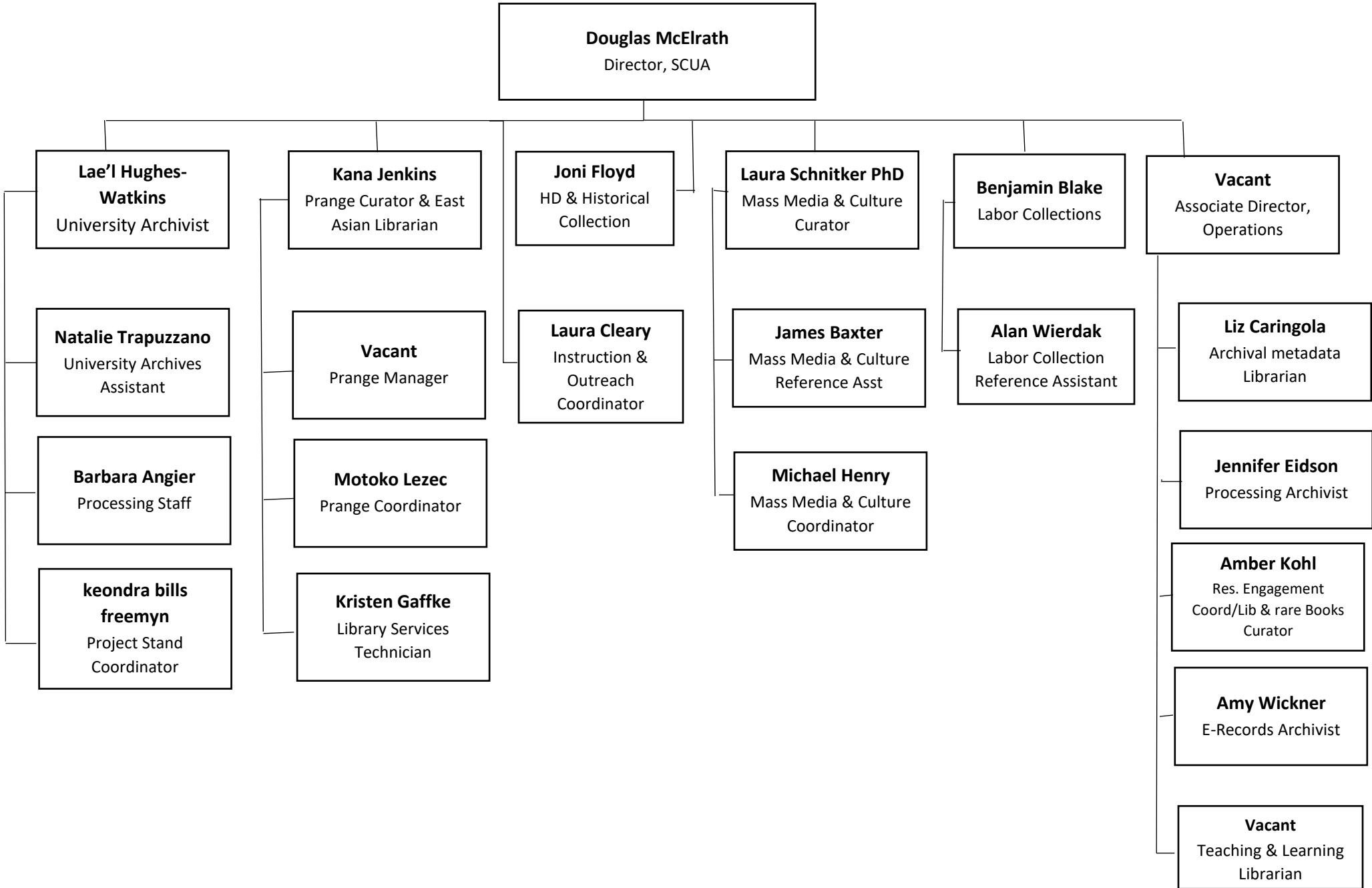
## Collection Strategies and Services [CSS]



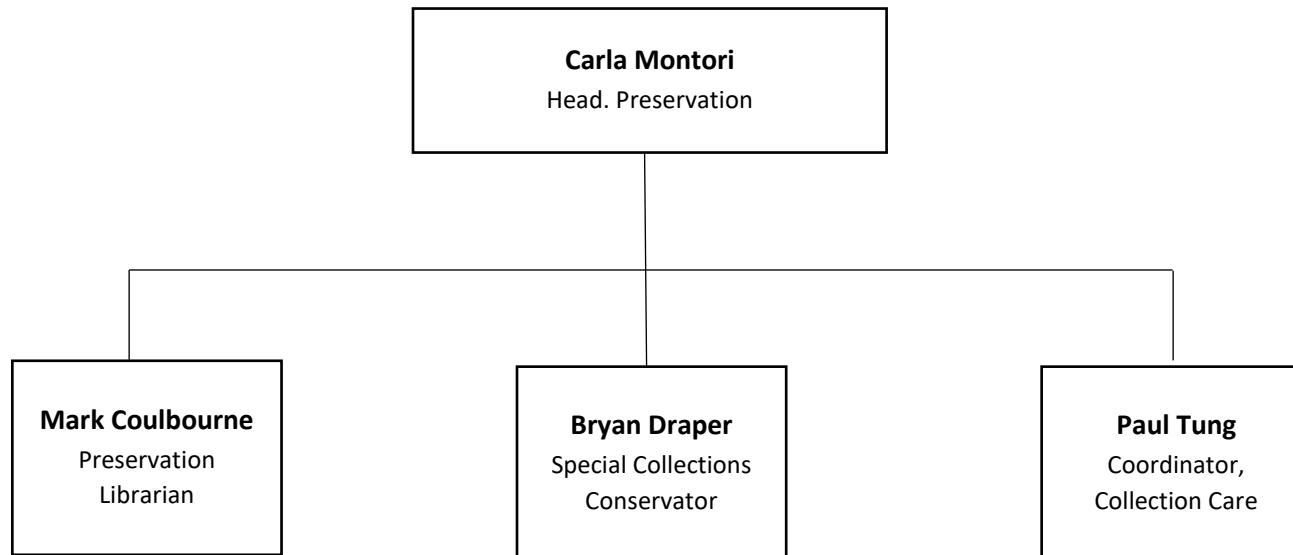
CSS: Catalog & Metadata Services [CMS]



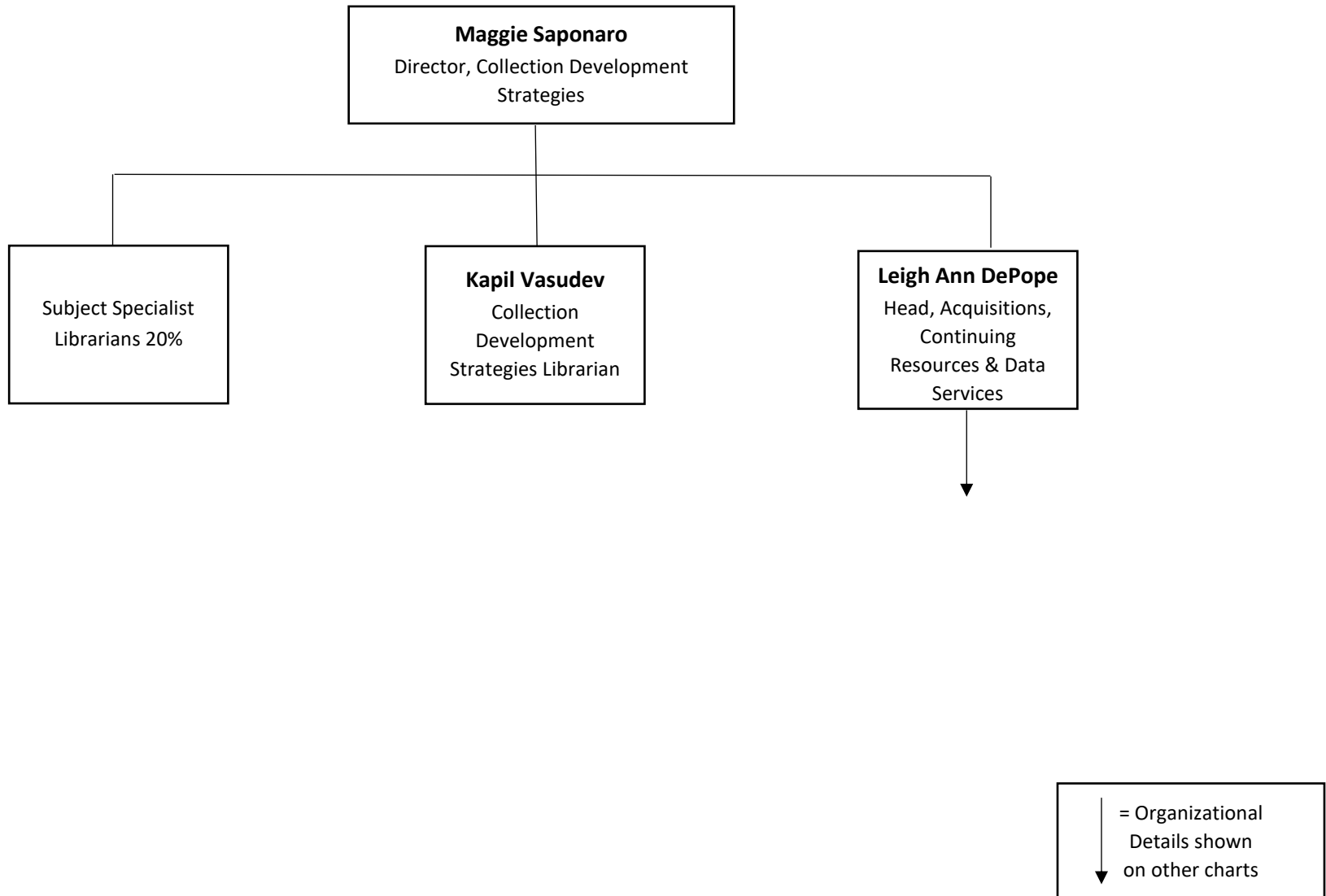
CSS – Special Collections and University Archives [SCUA]



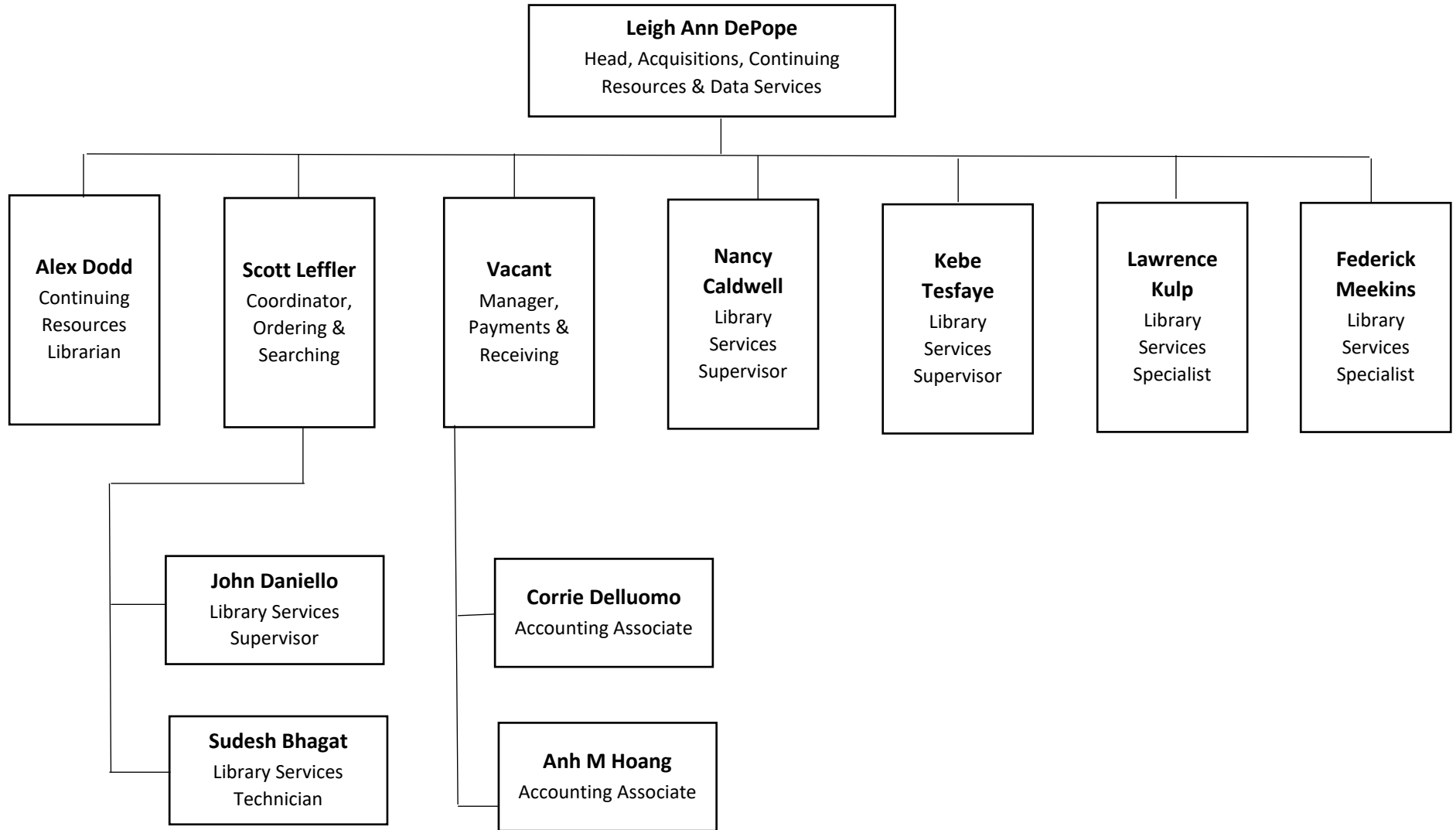
CSS: Preservation



CSS: Collection Development Strategies [CDS]

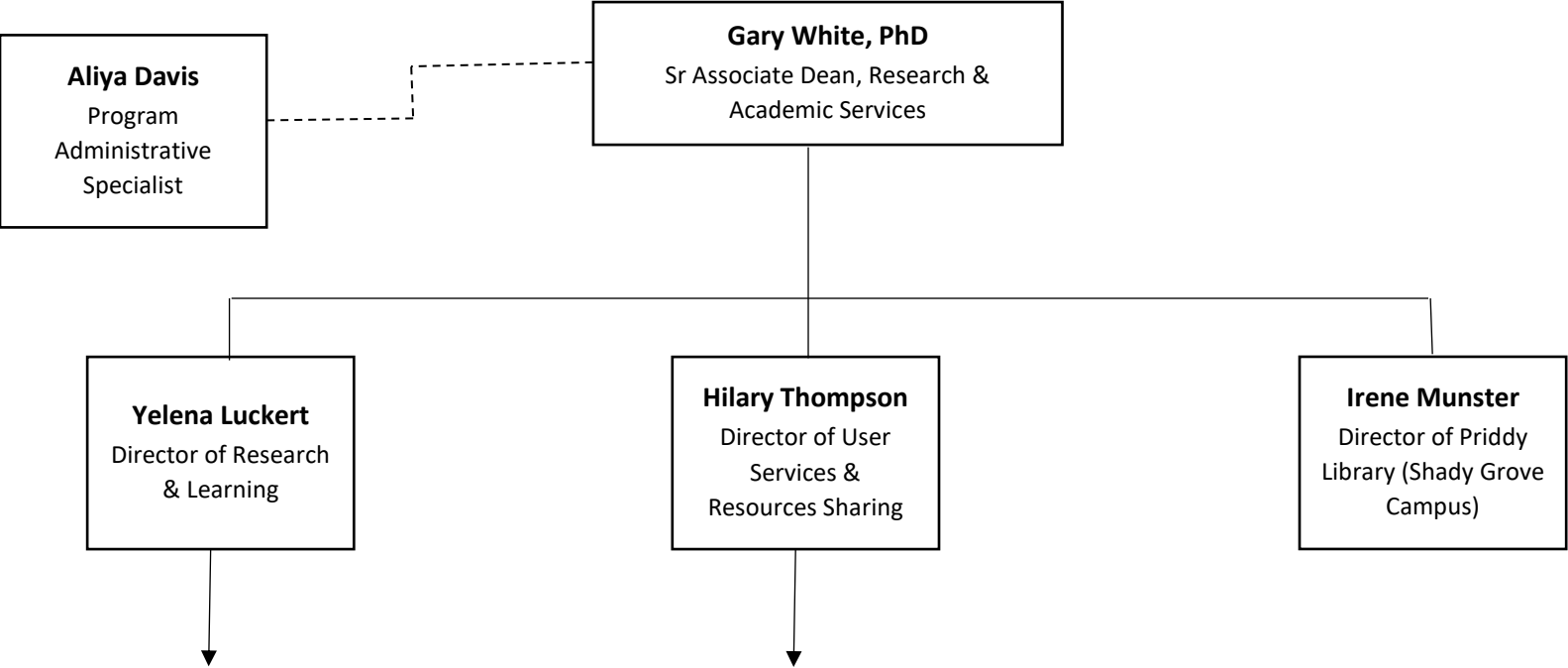


CSS: Acquisitions, Continuing Resources, and Data Services





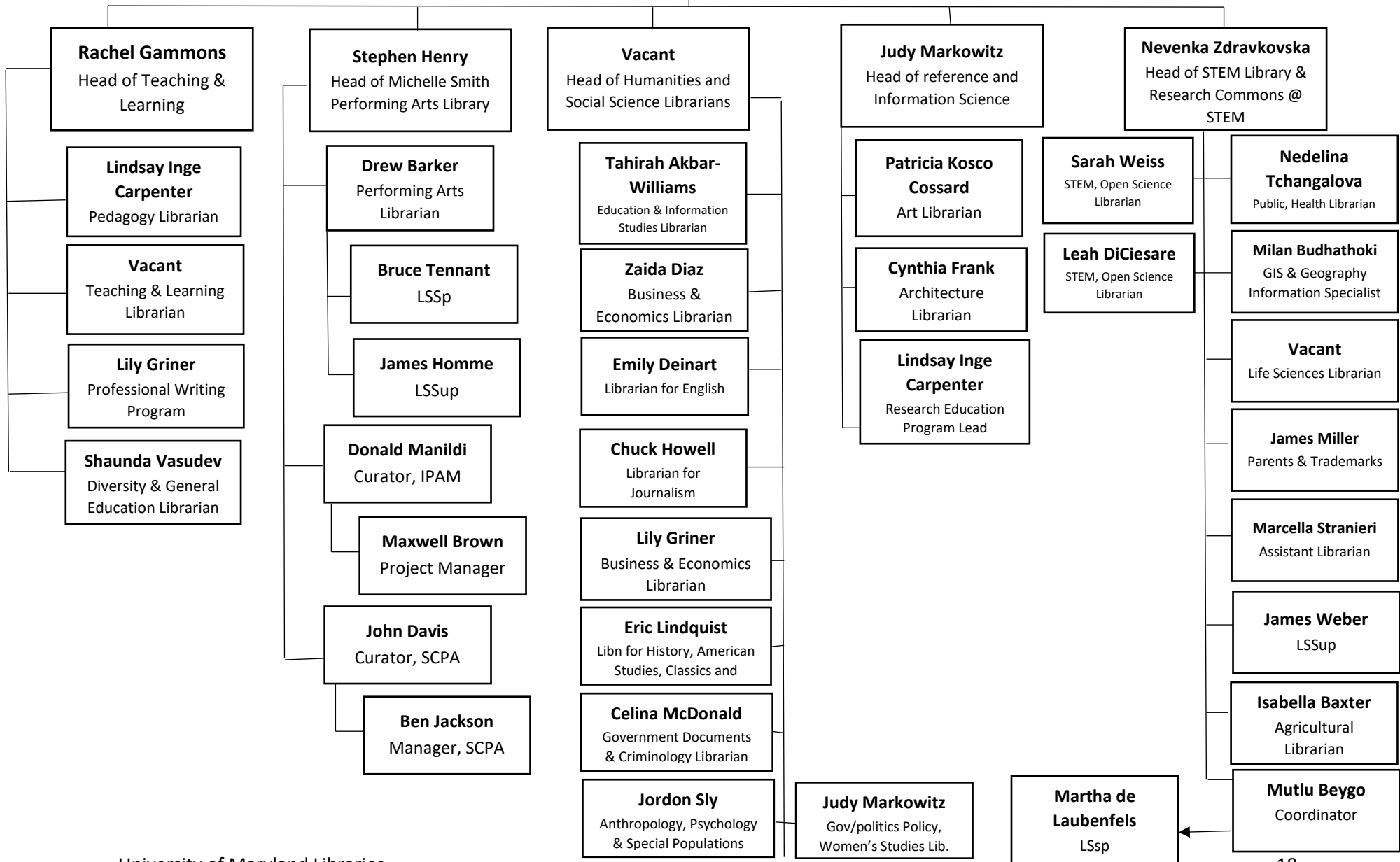
Research and Academic Services [RAS]



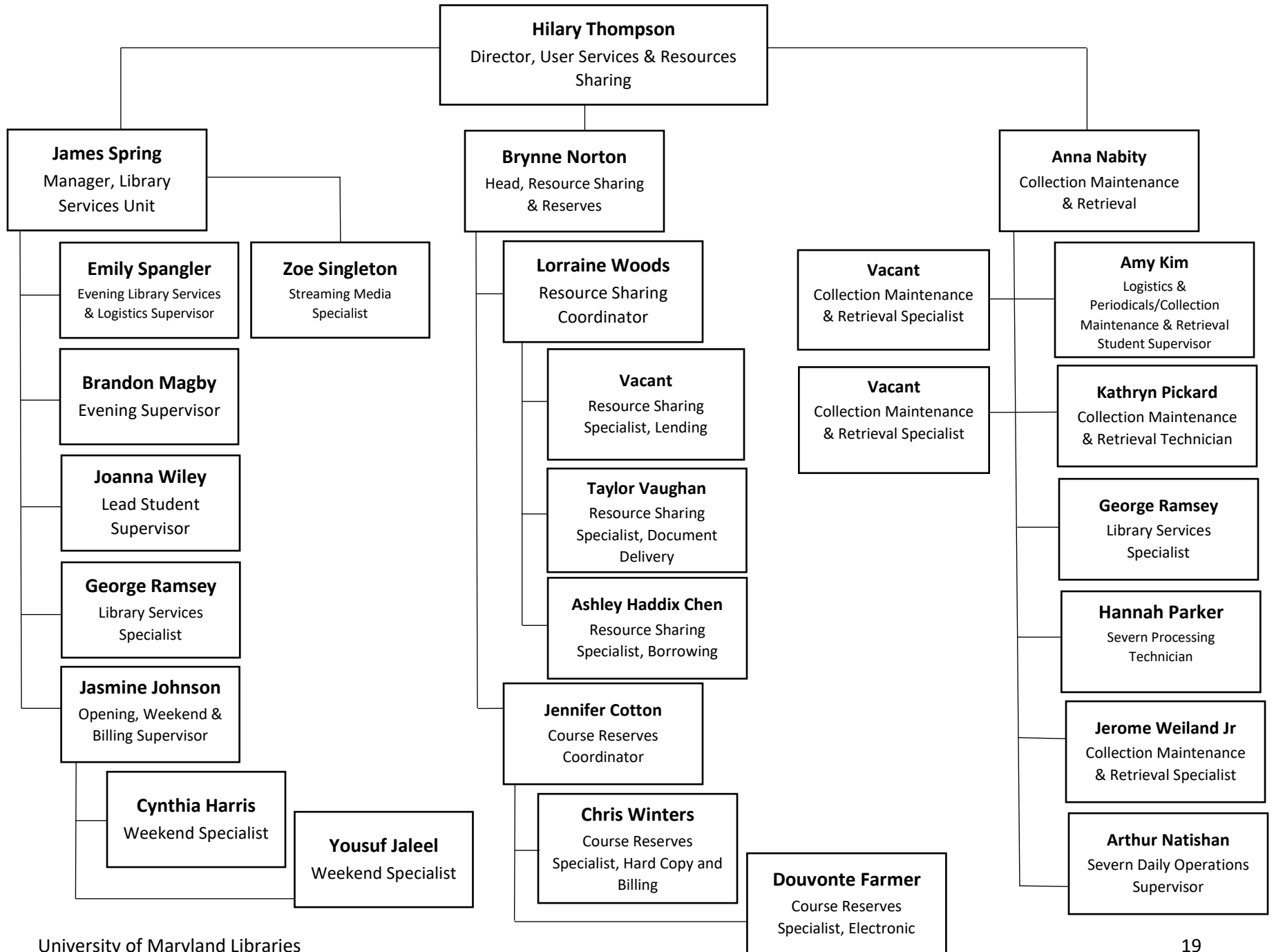
↓ = Organizational Details shown on other charts

RAS: Research Teaching and Learning [RTL]

**Yelena Luckert**  
Director of Research, Teaching and Learning



User Services and Resource Sharing [USRS]



User Services and Resource Sharing [USRS cont]

