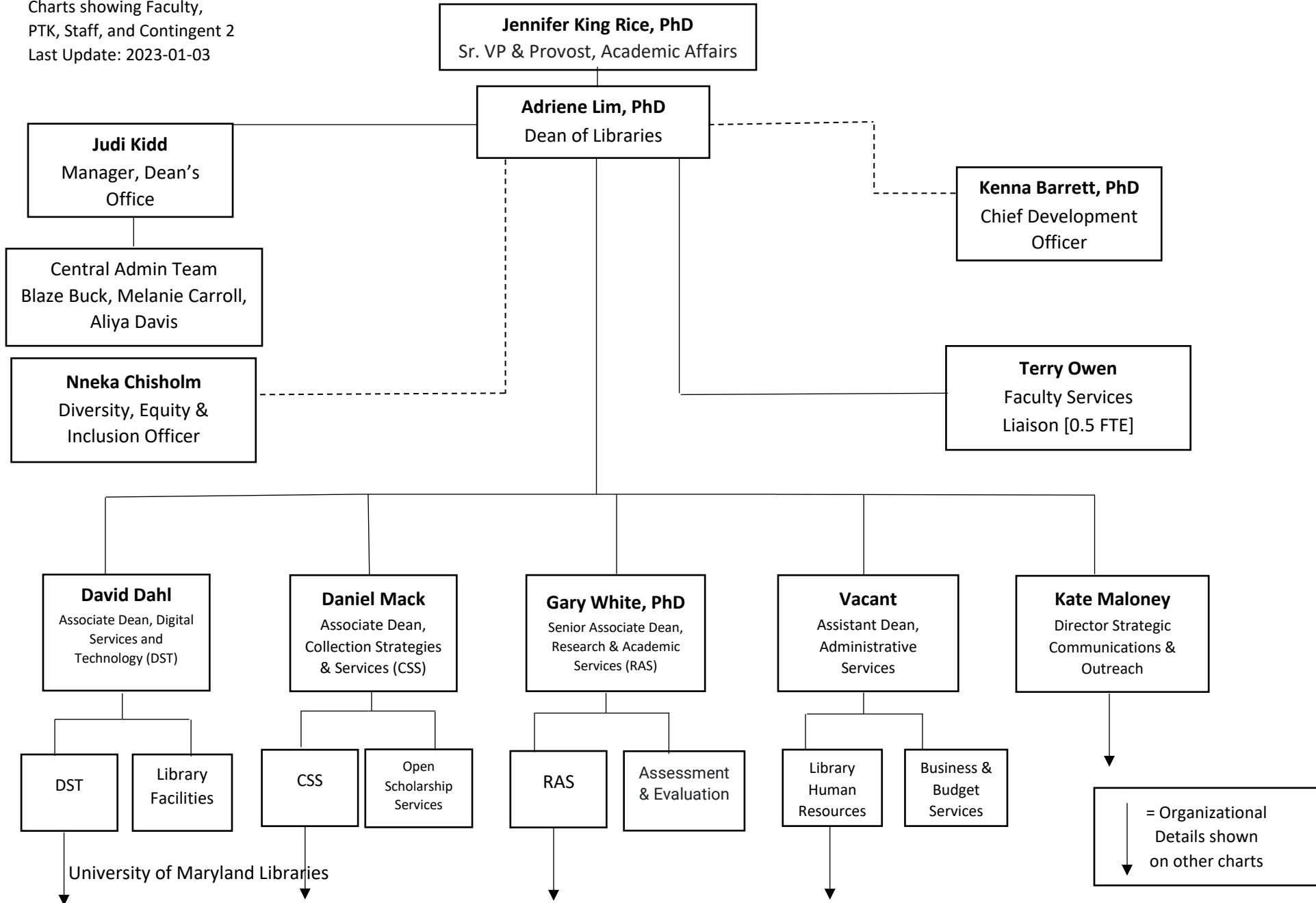


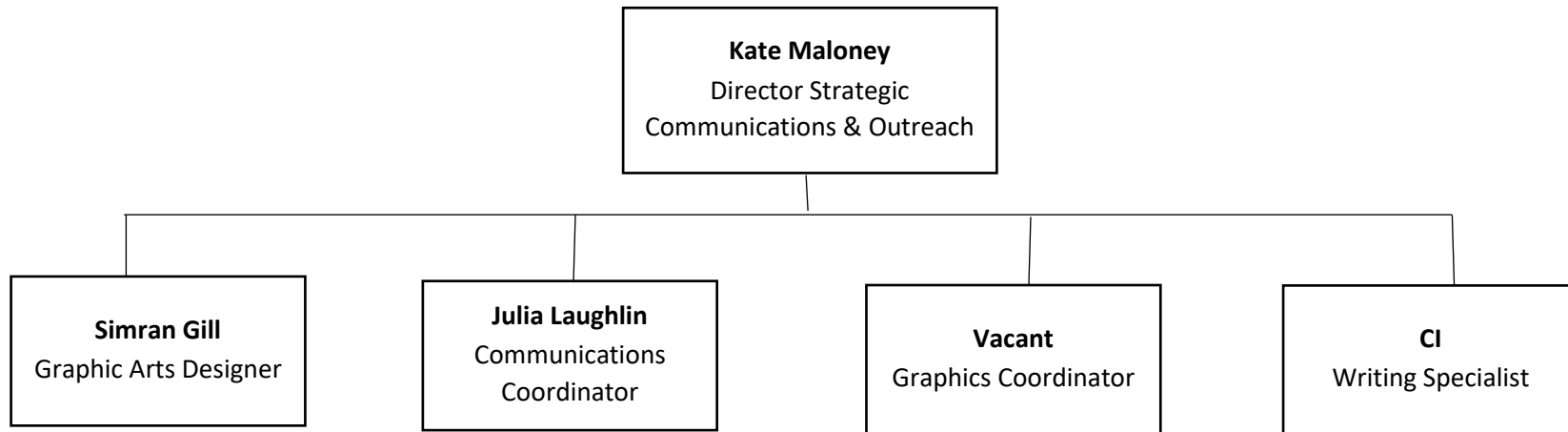
University of Maryland Libraries Organization Chart

Dean's Office and Library Administration

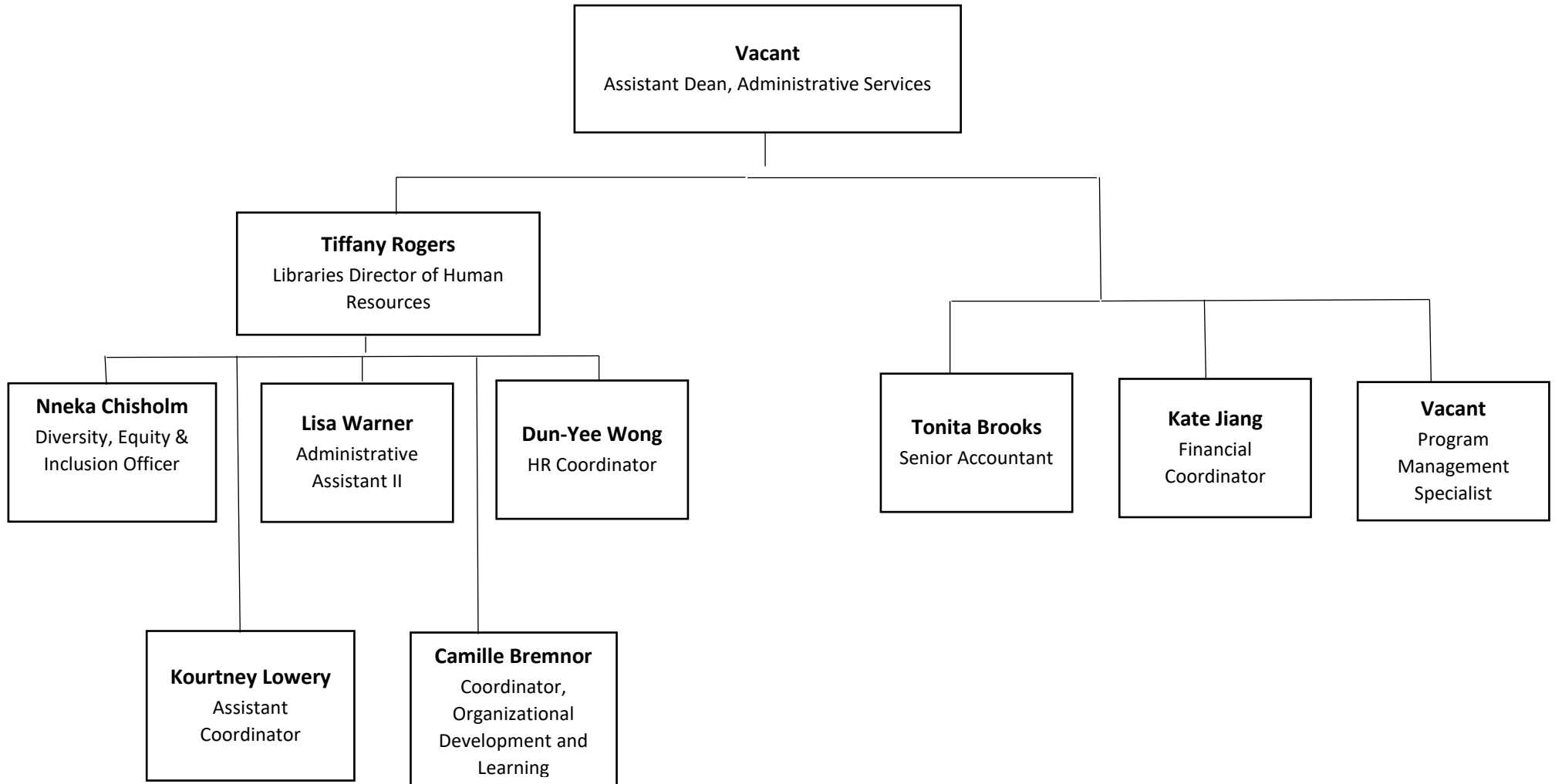
Charts showing Faculty,
PTK, Staff, and Contingent 2
Last Update: 2023-01-03



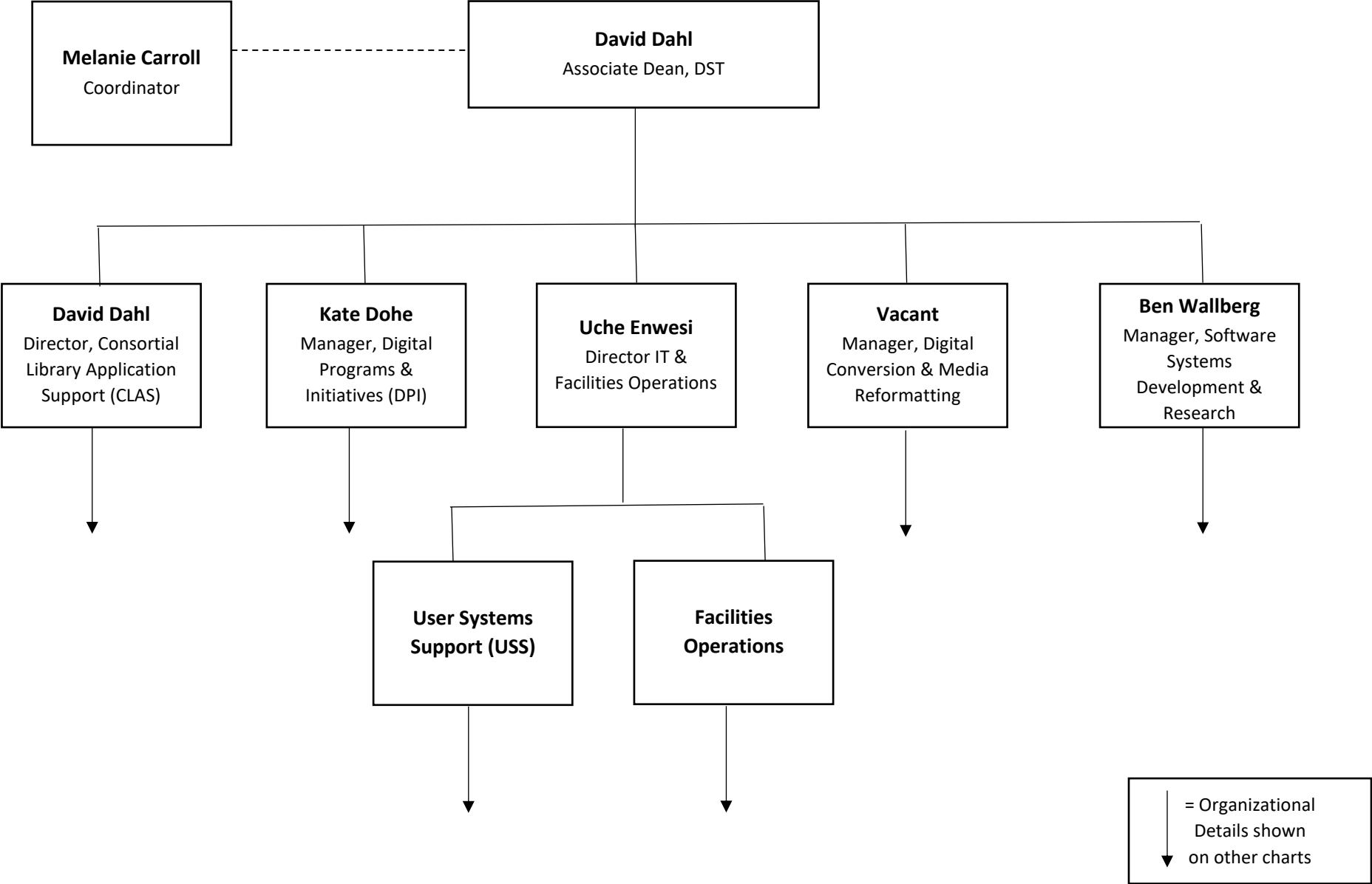
Strategic Communications and Outreach



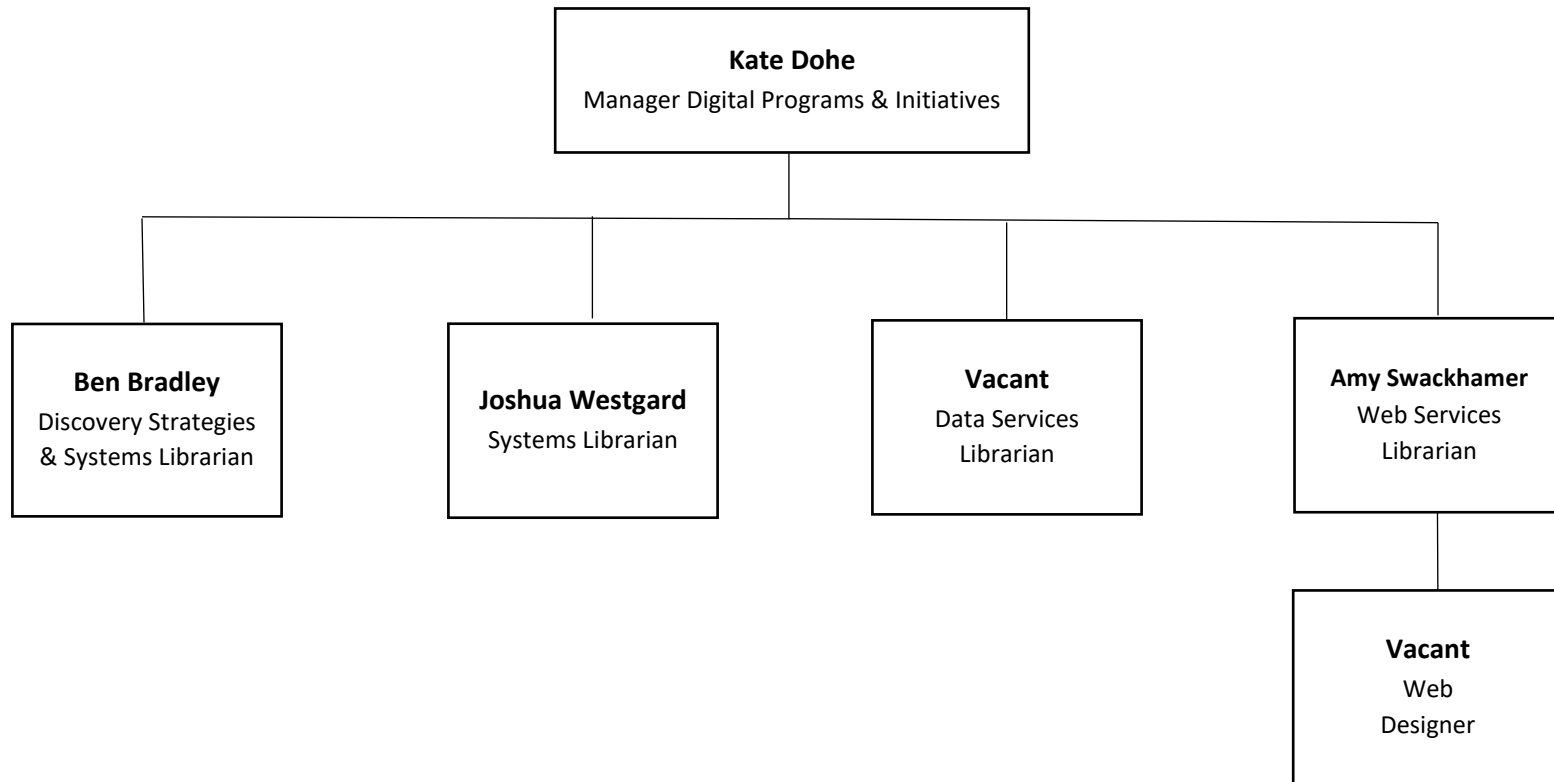
Administrative Services Division [ASD]



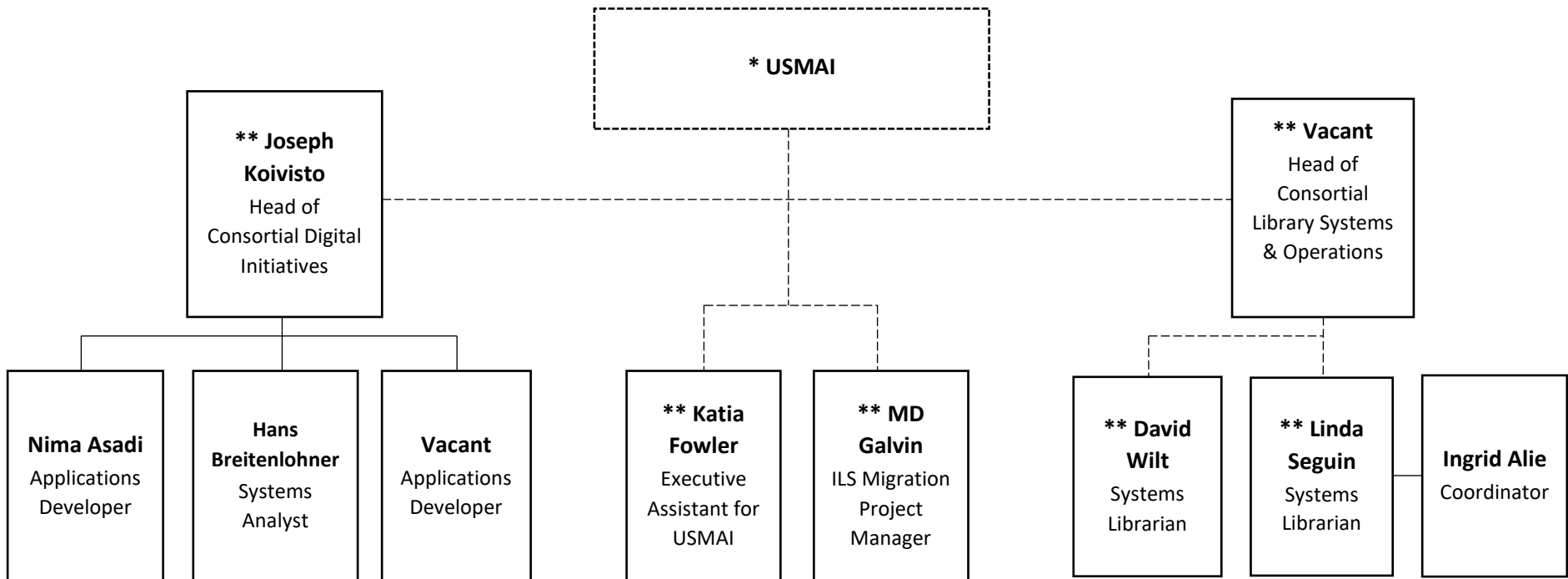
Digital Services and Technologies [DST]



DST: Digital Programs & Initiatives [DPI]

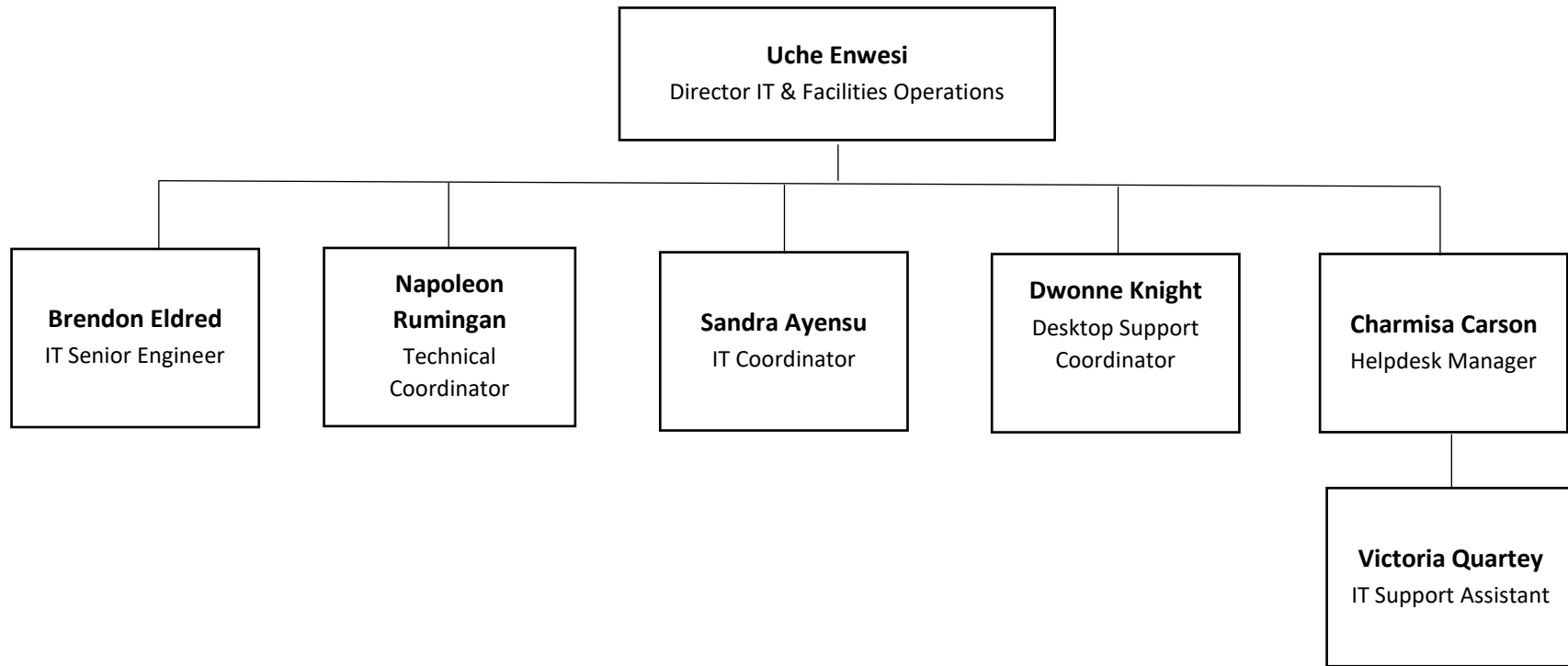


DST: Consortial Library Applications Support [CLAS]

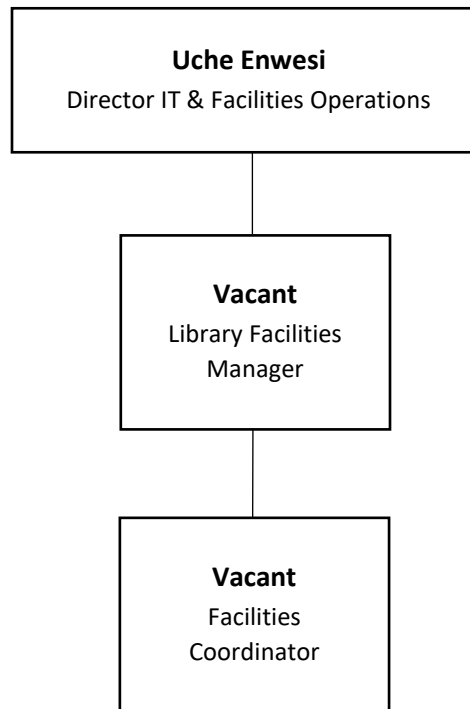


* USMAI Executive Director acts as unit director
 ** Associate Dean is hiring manager

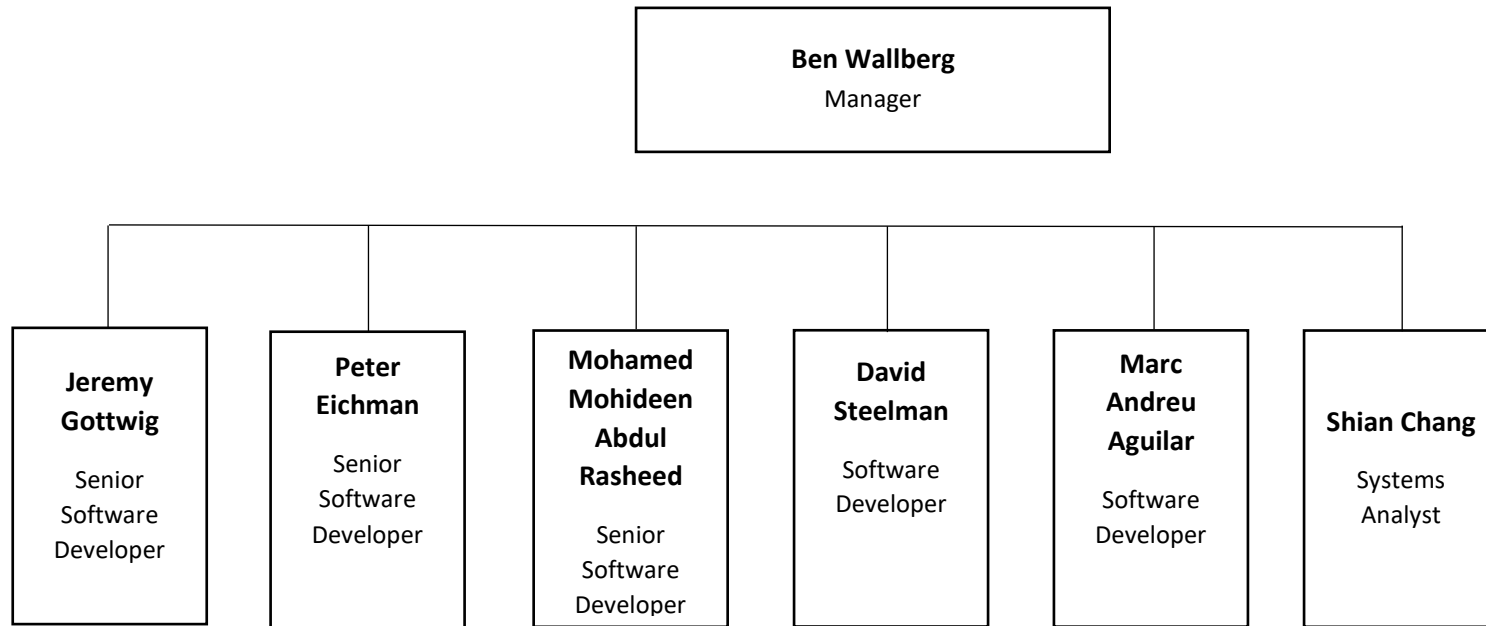
DST: User and Systems Support [USS]



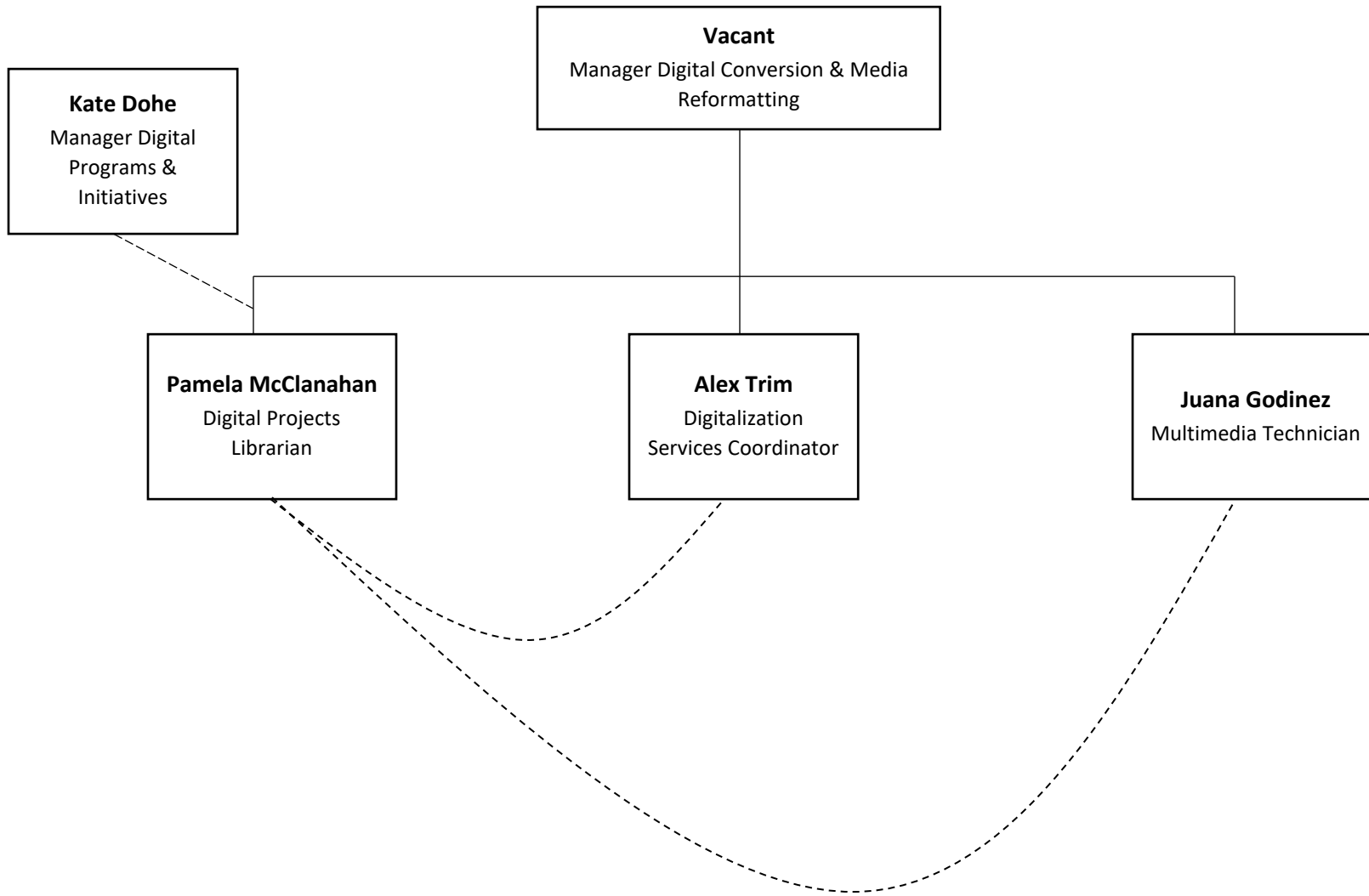
DST: Facility Operations



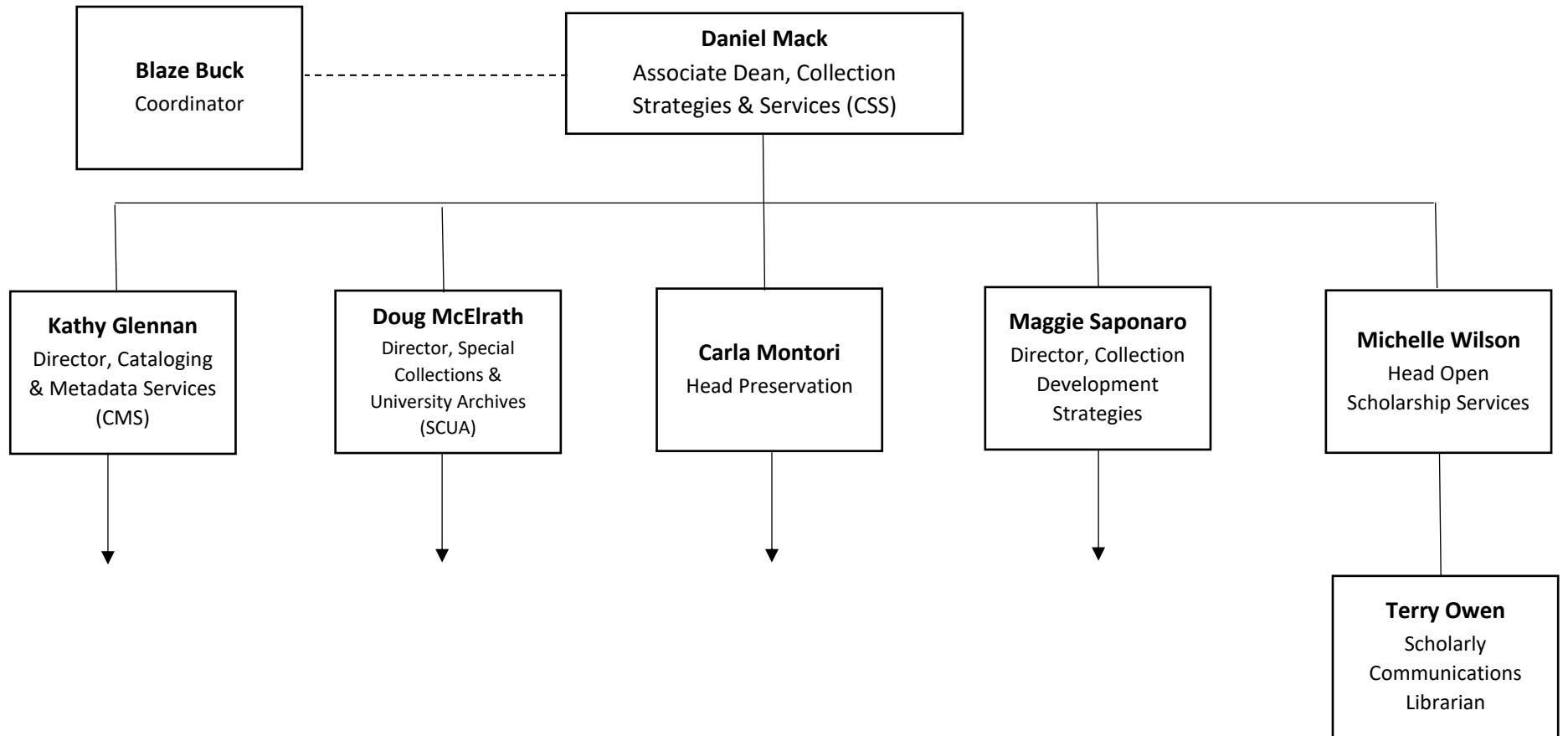
DST: Software Systems Development & Research [SSDR]



DST: Digital Conversion & Media Reformatting [DCMR]

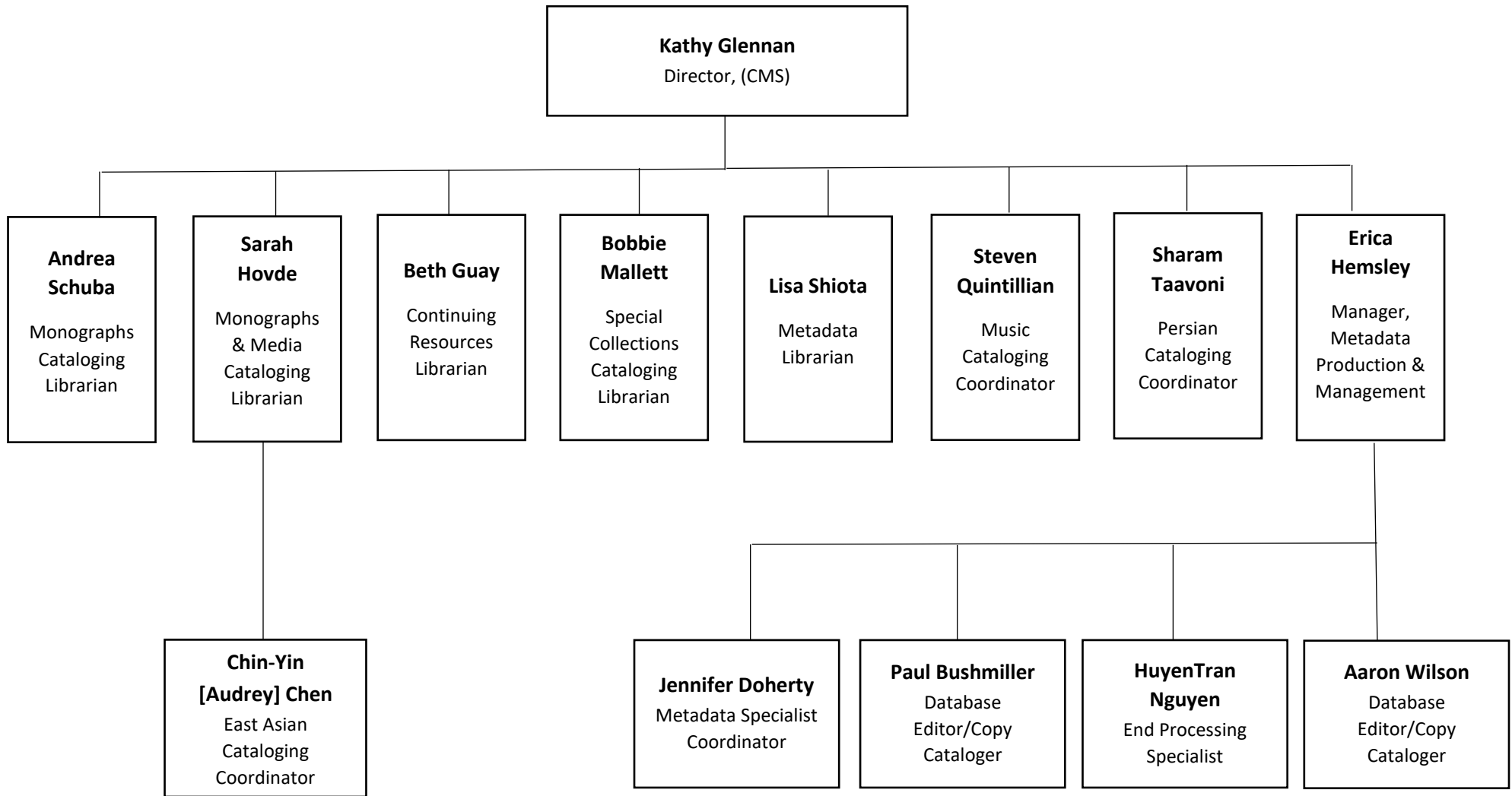


Collection Strategies and Services [CSS]

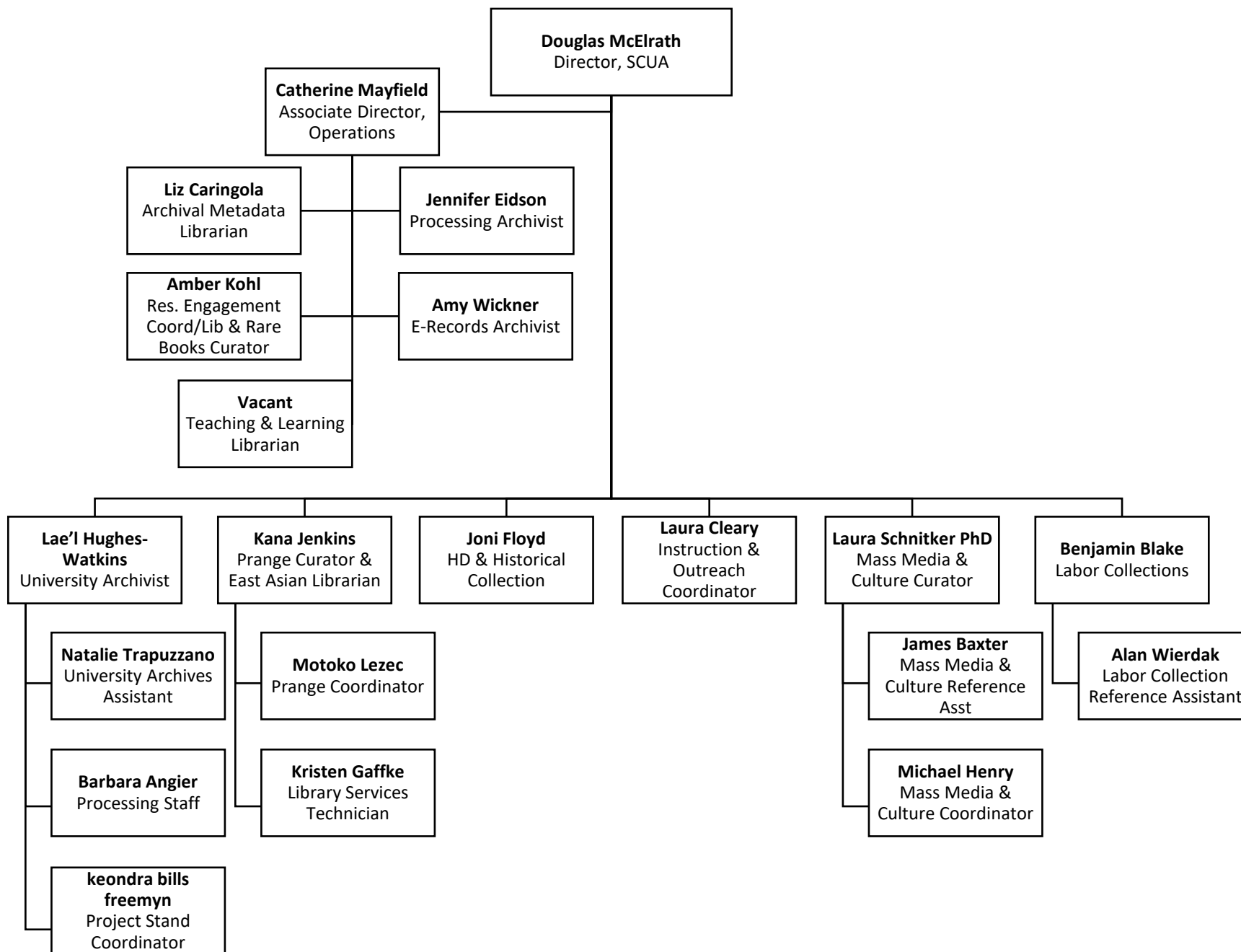


↓ = Organizational Details shown on other charts

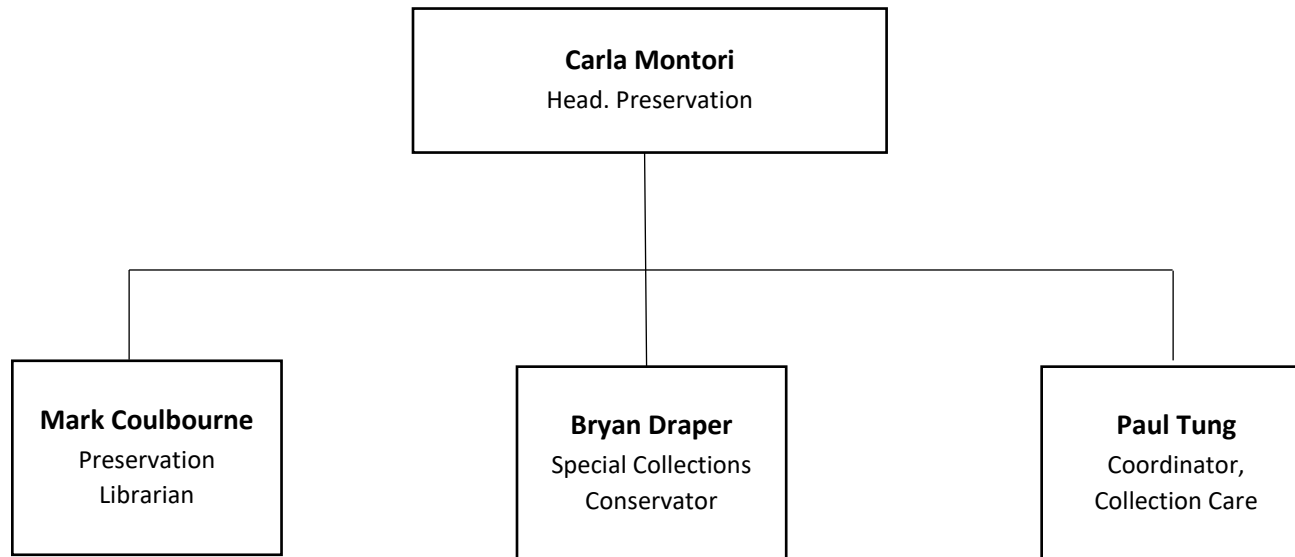
CSS: Catalog & Metadata Services [CMS]



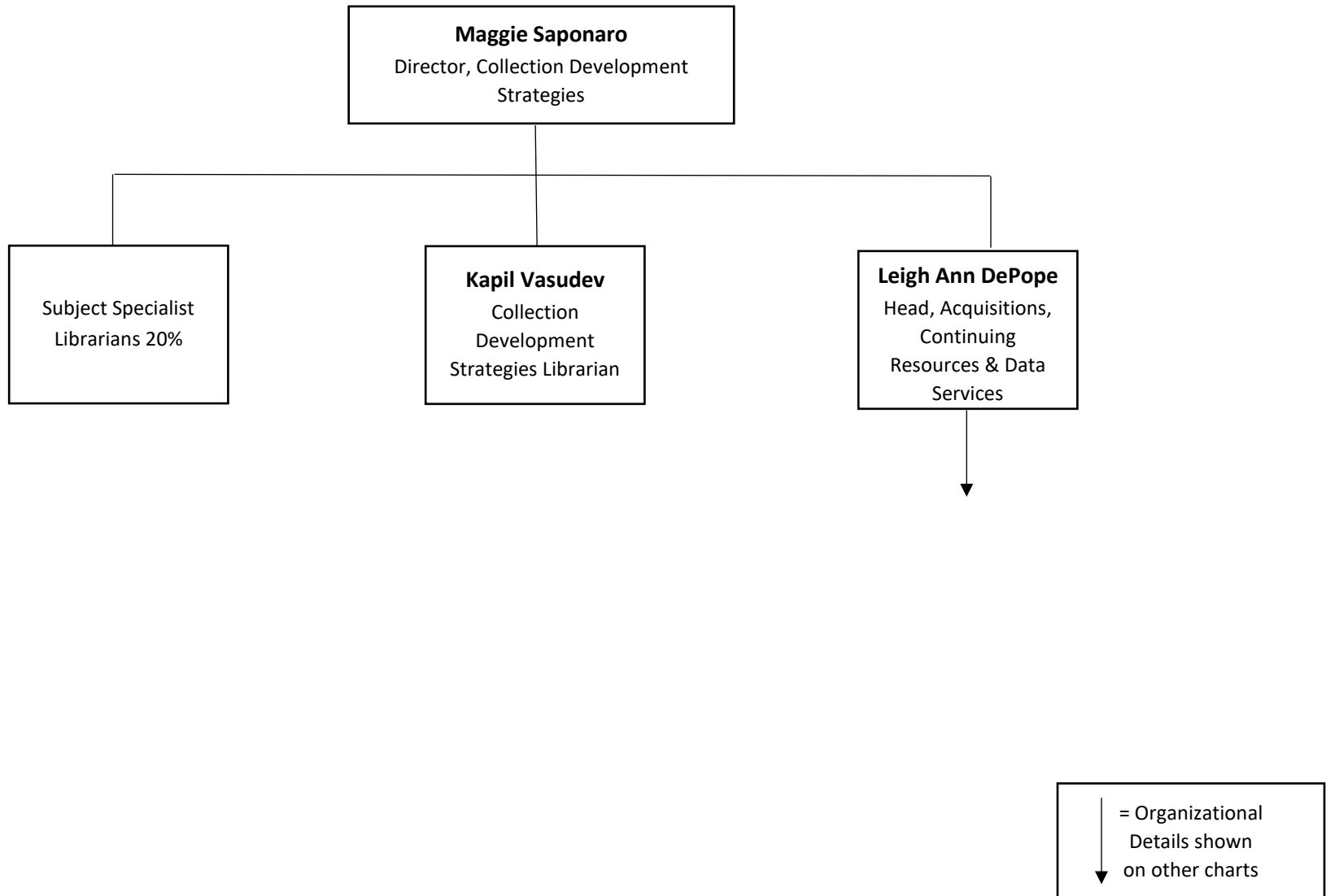
CSS – Special Collections and University Archives [SCUA]



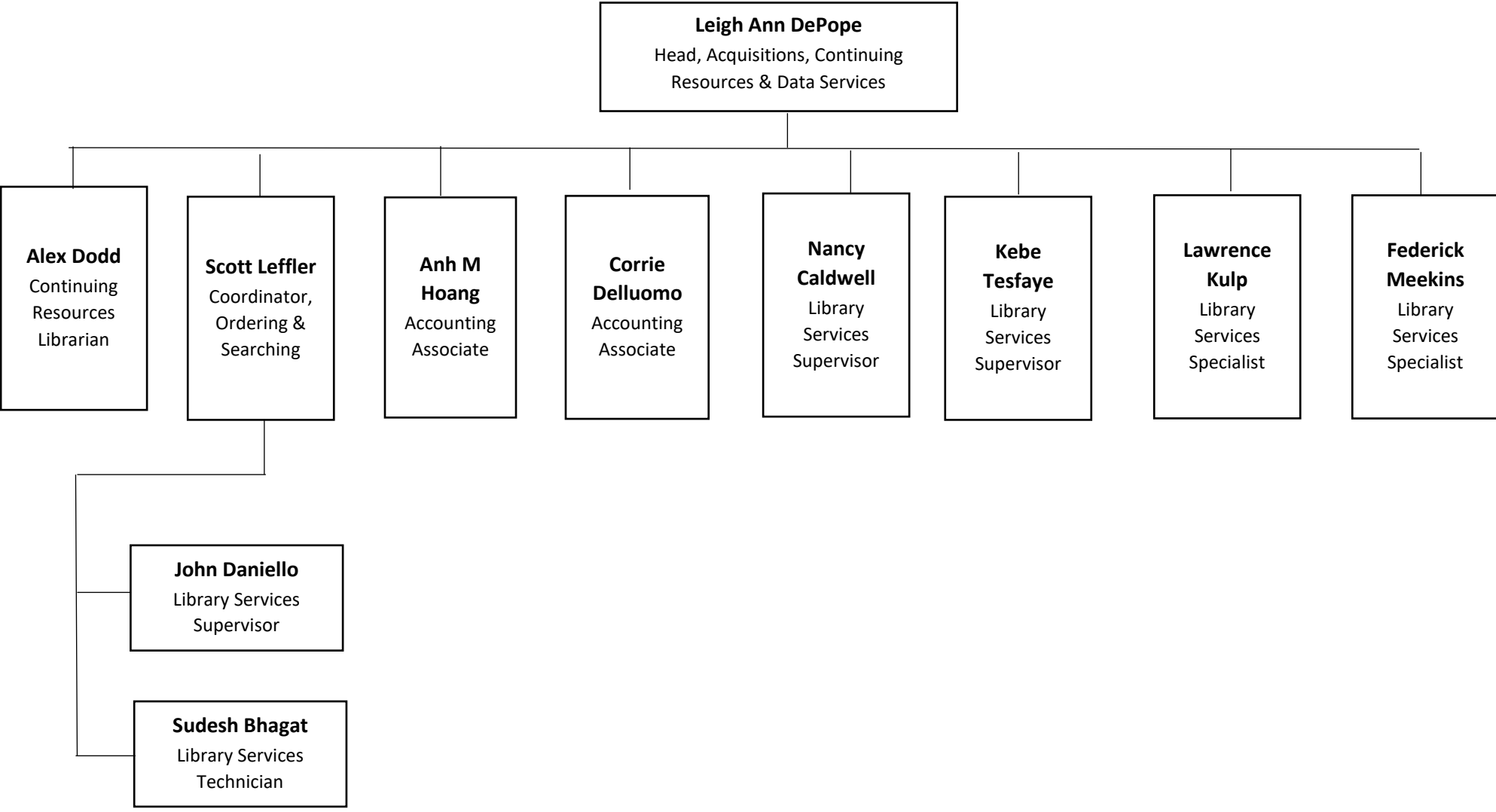
CSS: Preservation



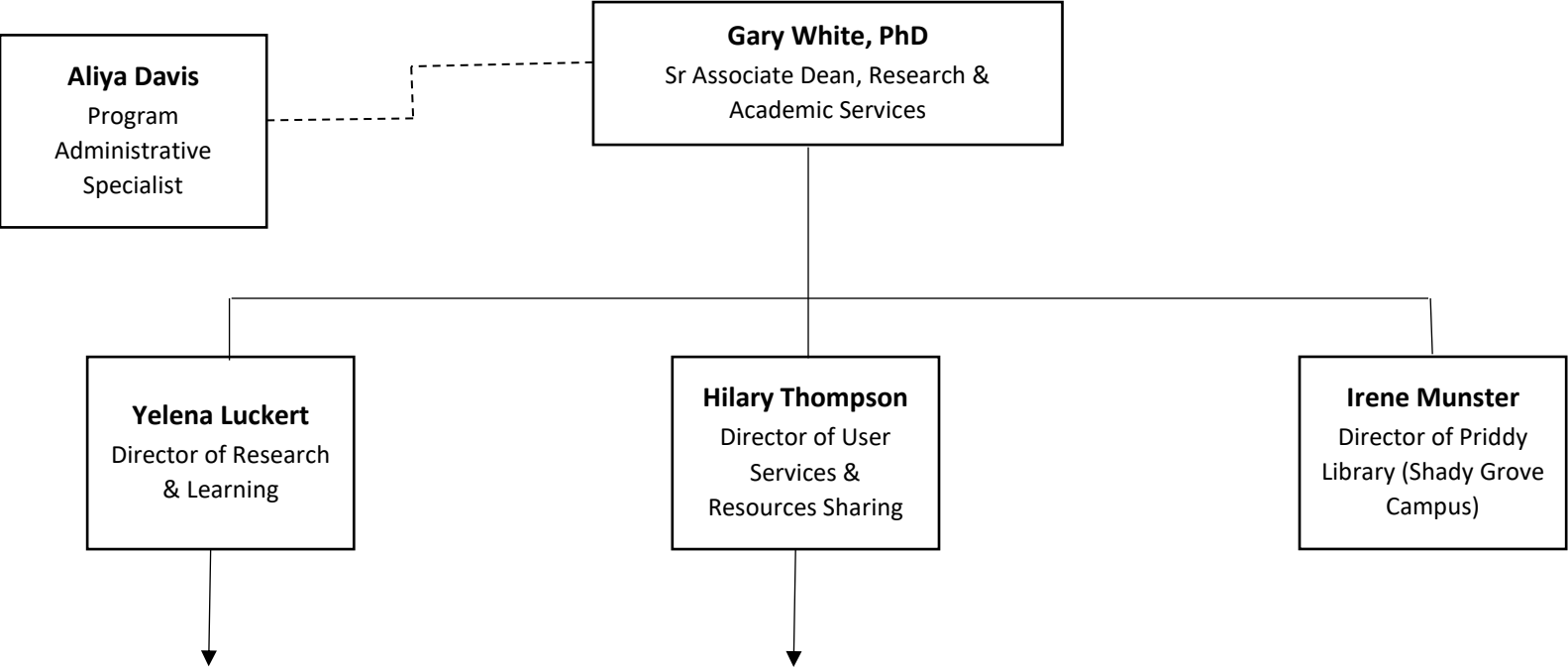
CSS: Collection Development Strategies [CDS]



CSS: Acquisitions, Continuing Resources, and Data Services

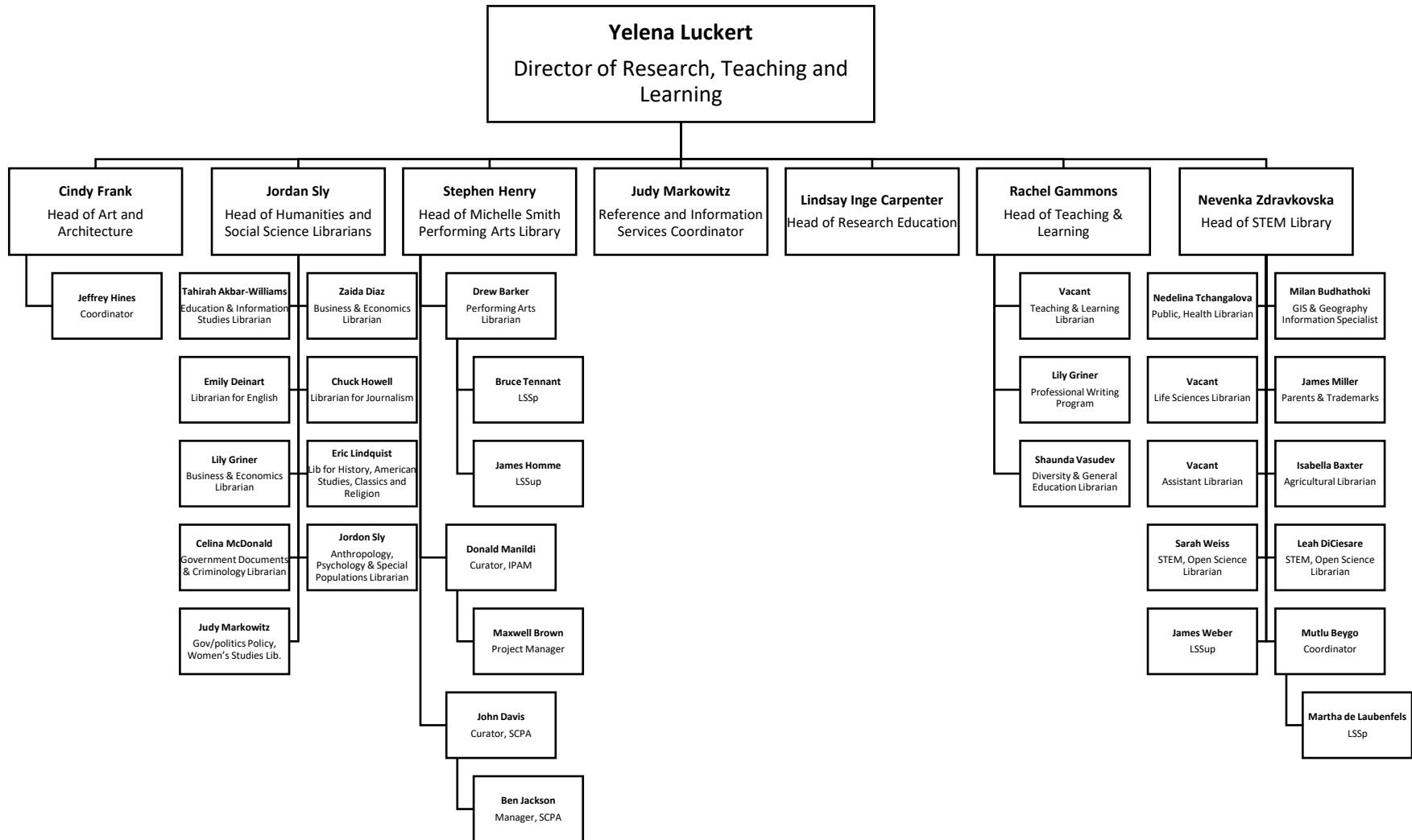


Research and Academic Services [RAS]

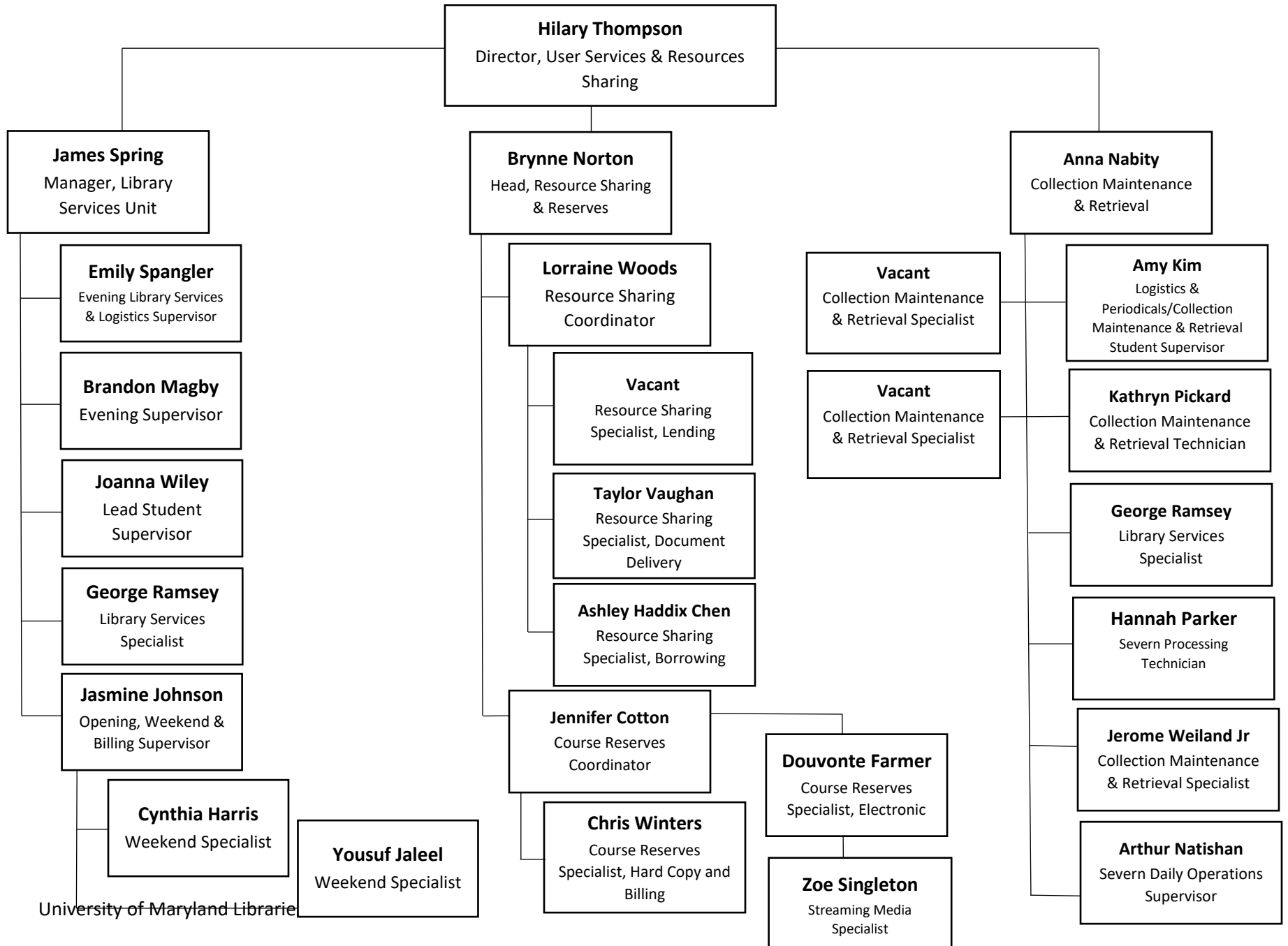


↓ = Organizational Details shown on other charts

RAS: Research Teaching and Learning [RTL]



User Services and Resource Sharing [USRS]



User Services and Resource Sharing [USRS cont]

