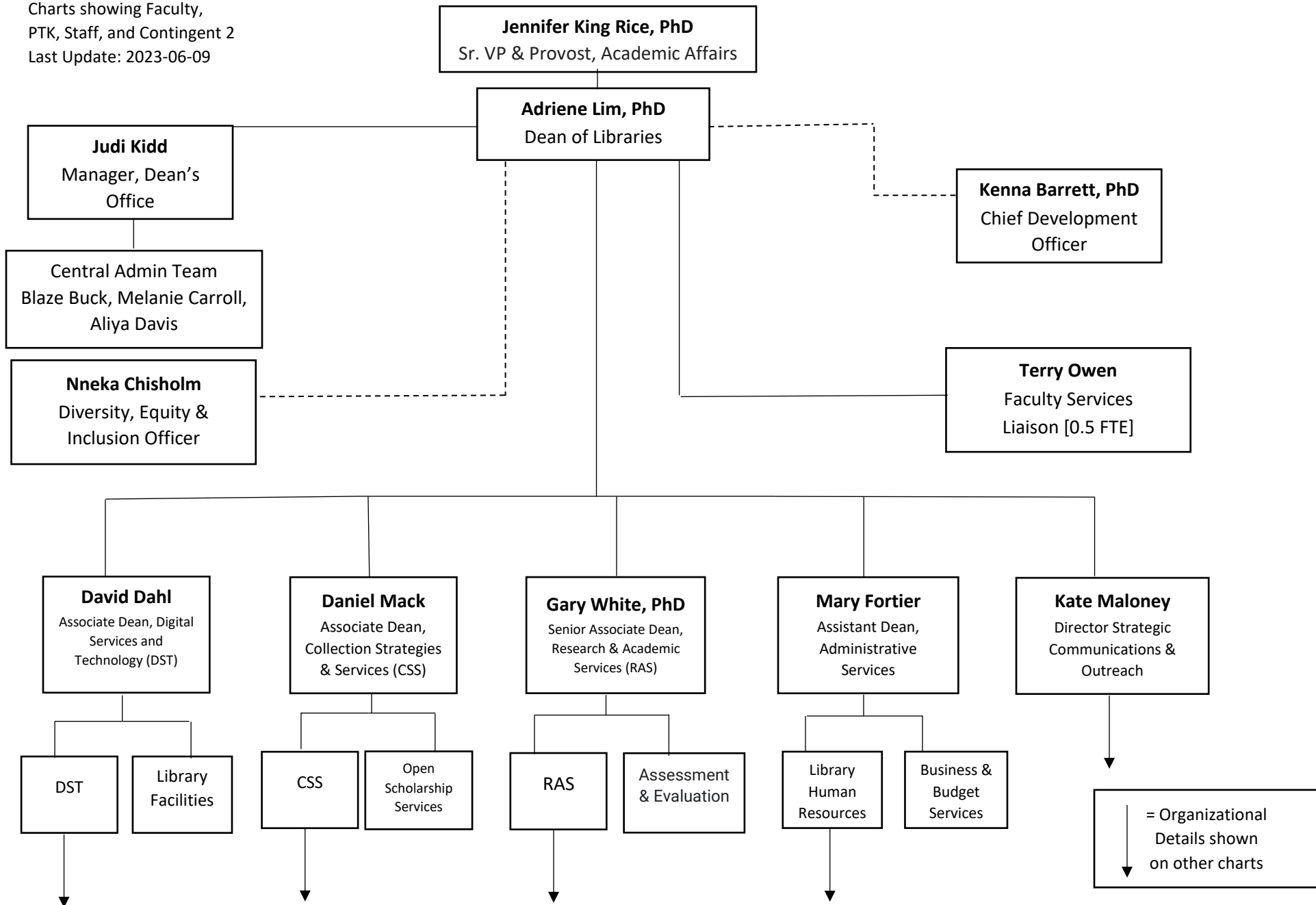
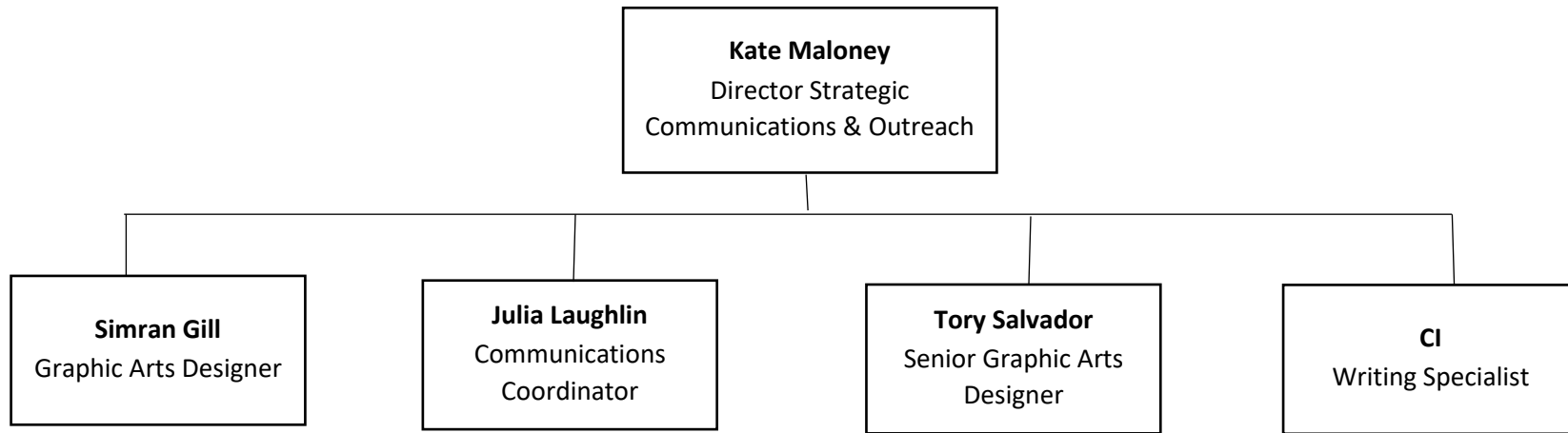


University of Maryland Libraries Organization Chart

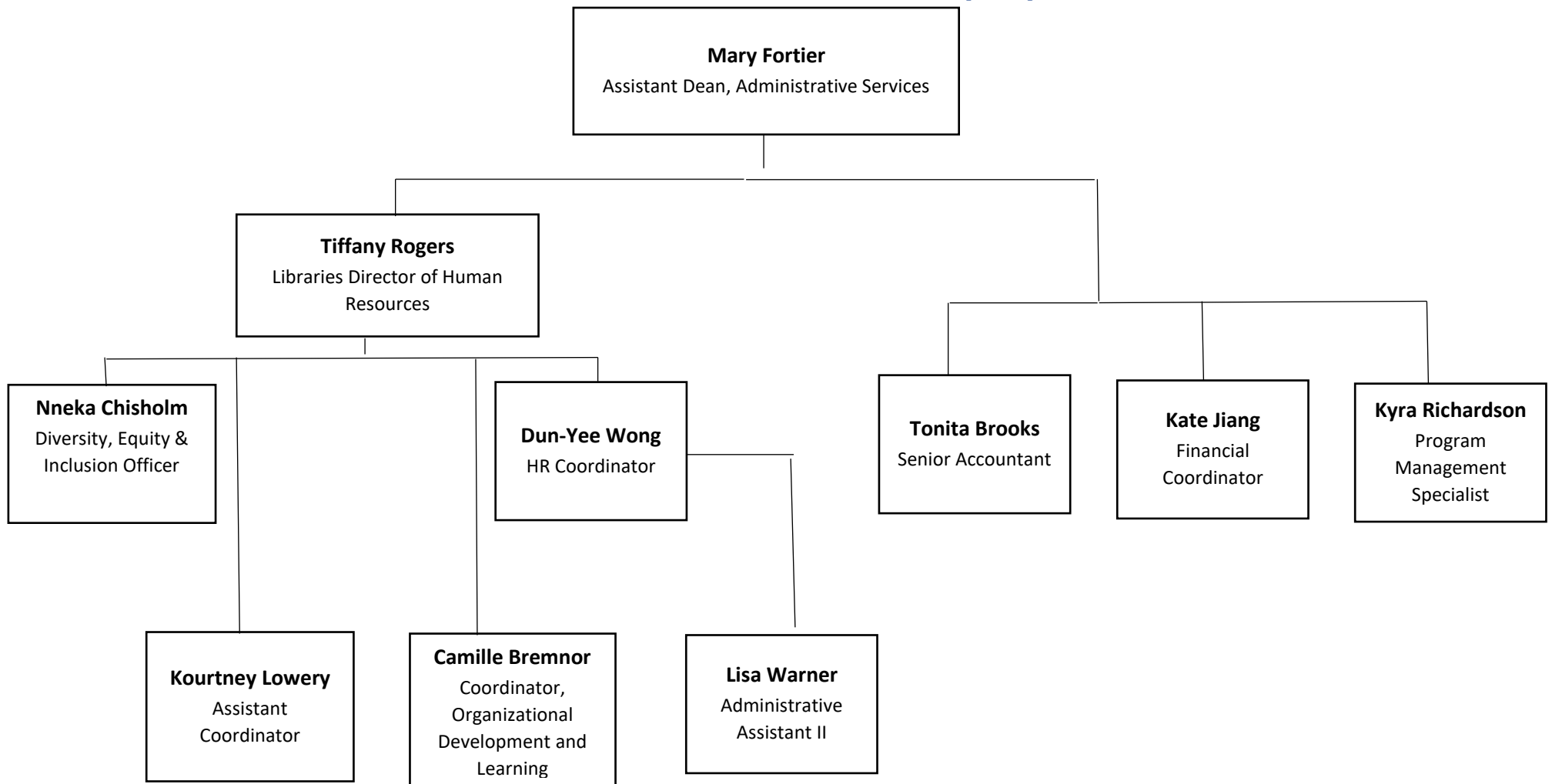
Dean's Office and Library Administration

Charts showing Faculty,
PTK, Staff, and Contingent 2
Last Update: 2023-06-09

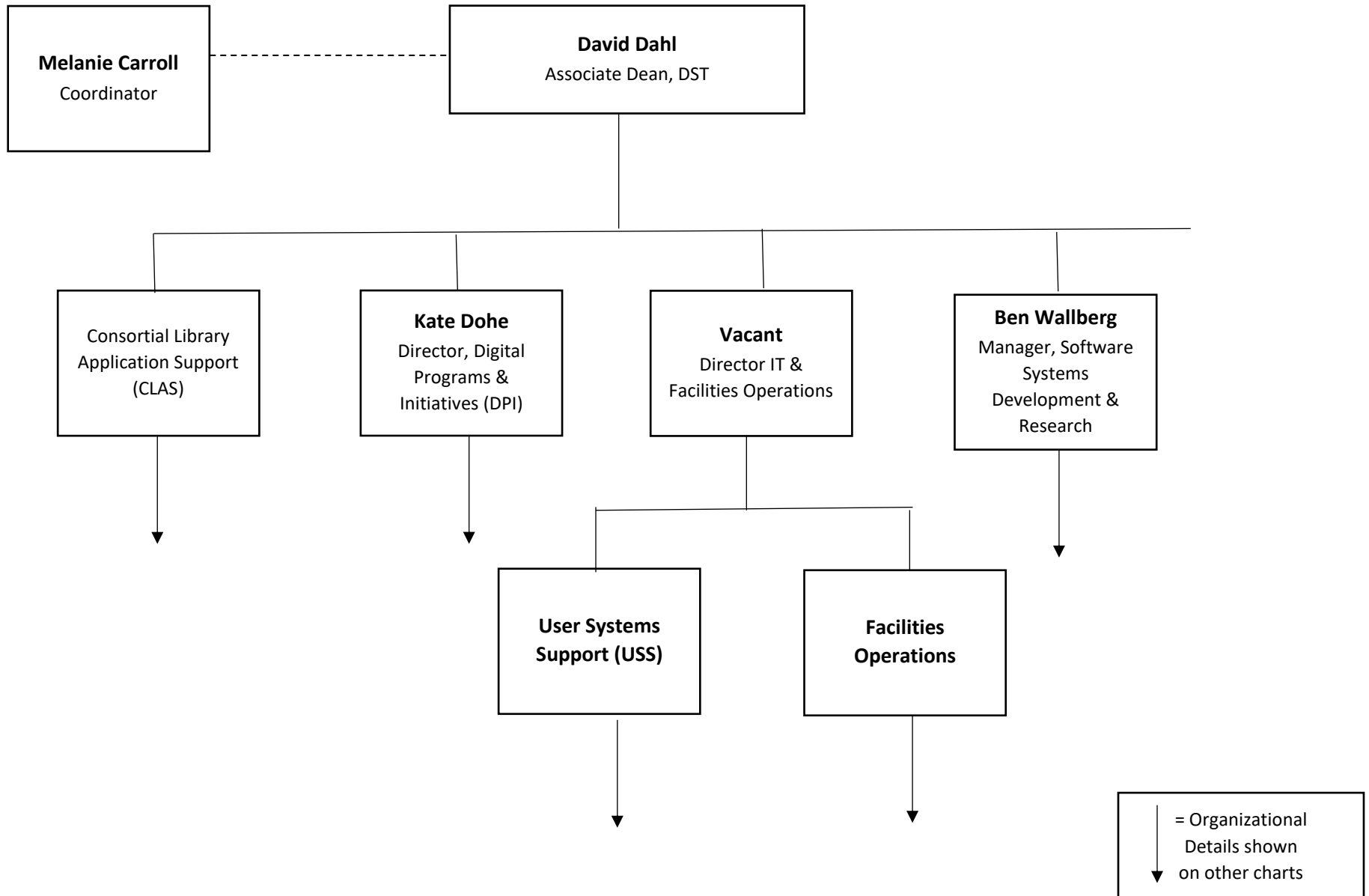




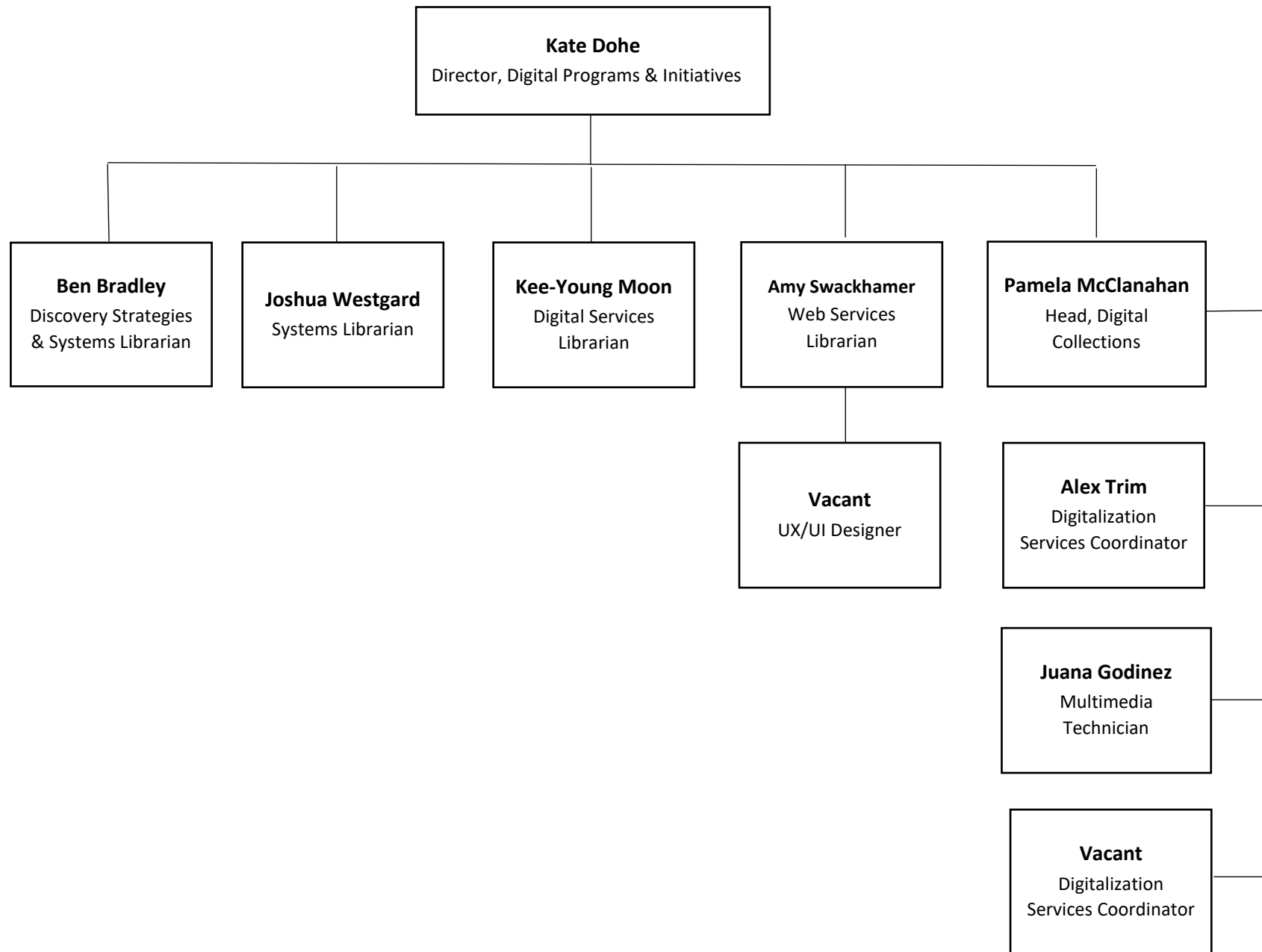
Administrative Services Division [ASD]

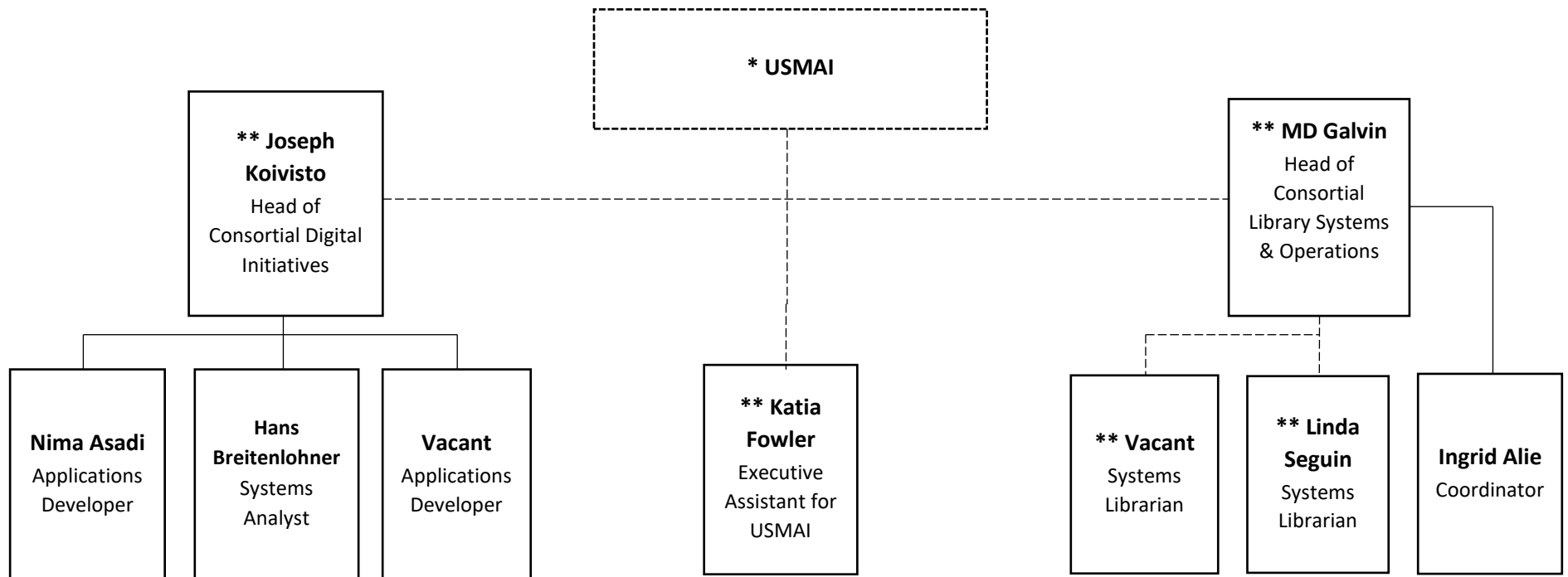


Digital Services and Technologies [DST]

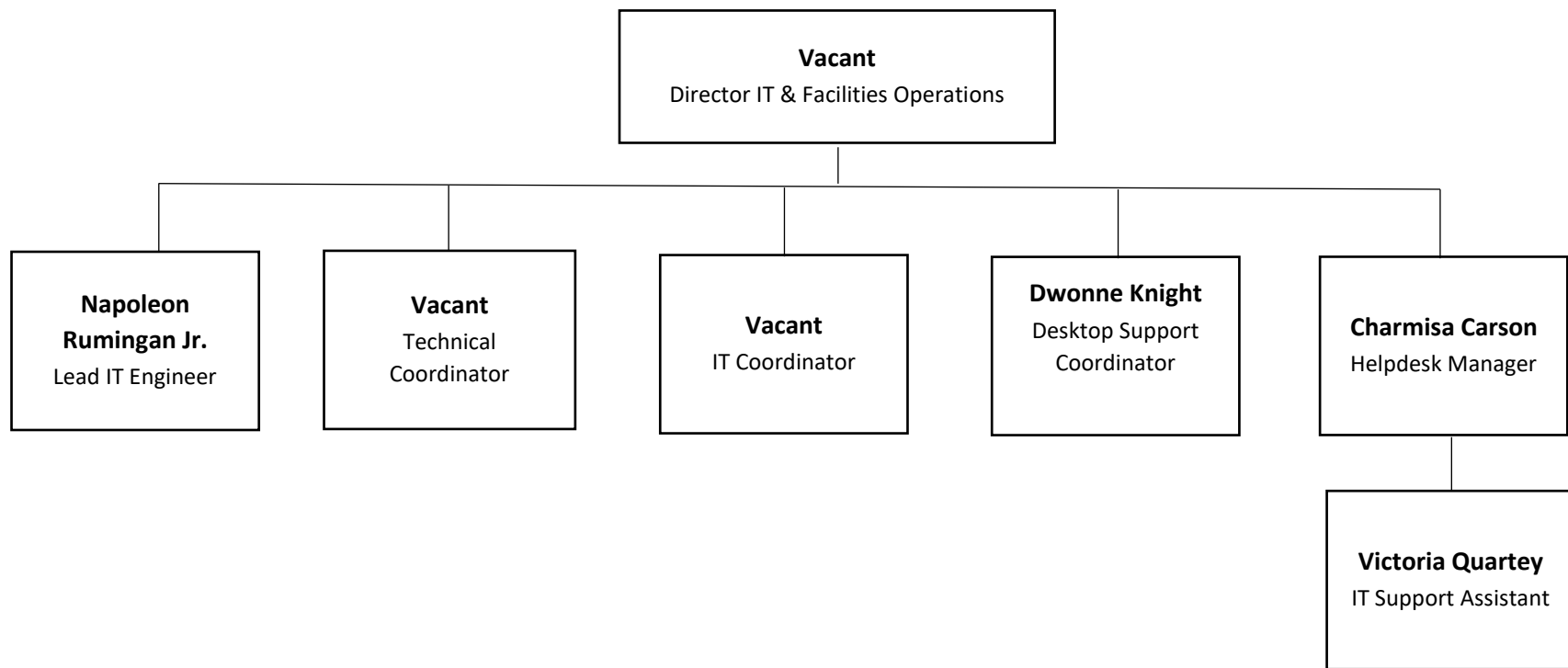


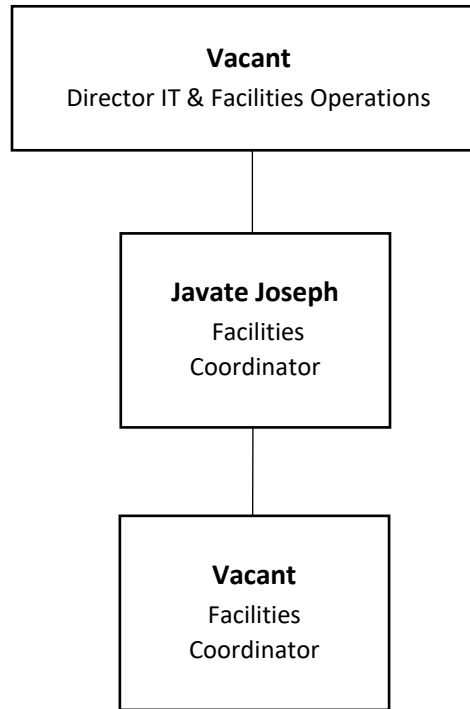
DST: Digital Programs & Initiatives [DPI]

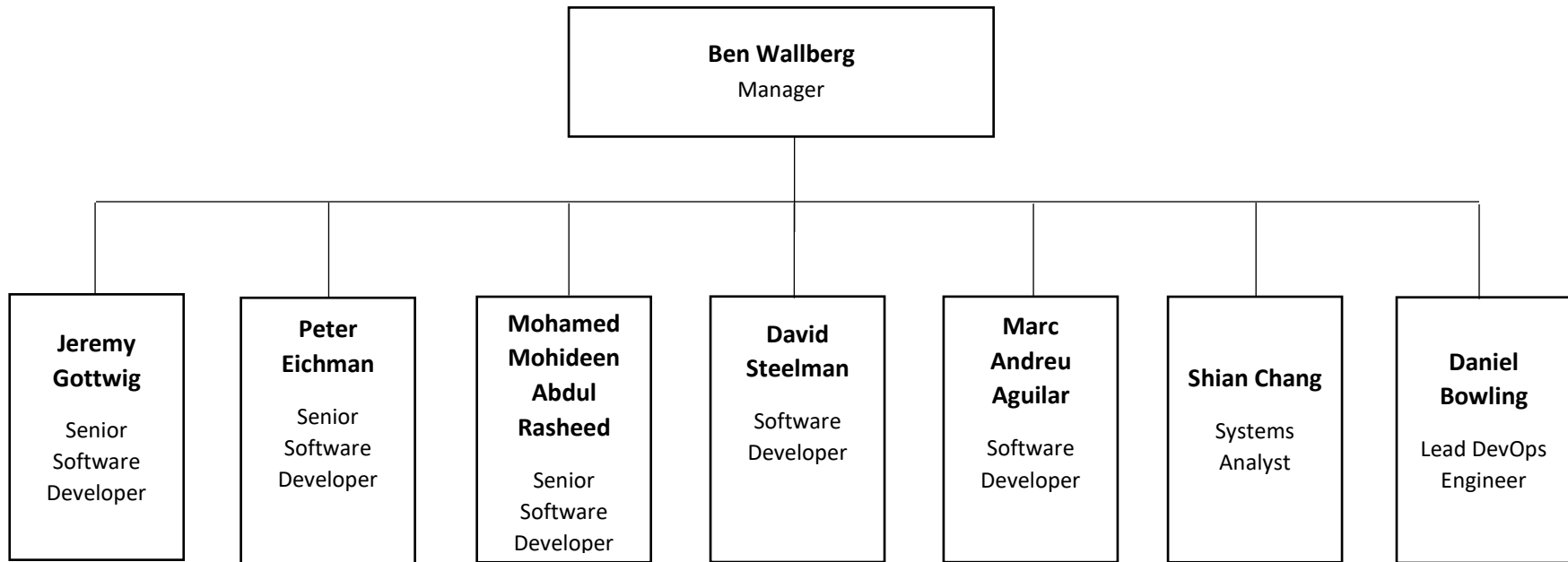




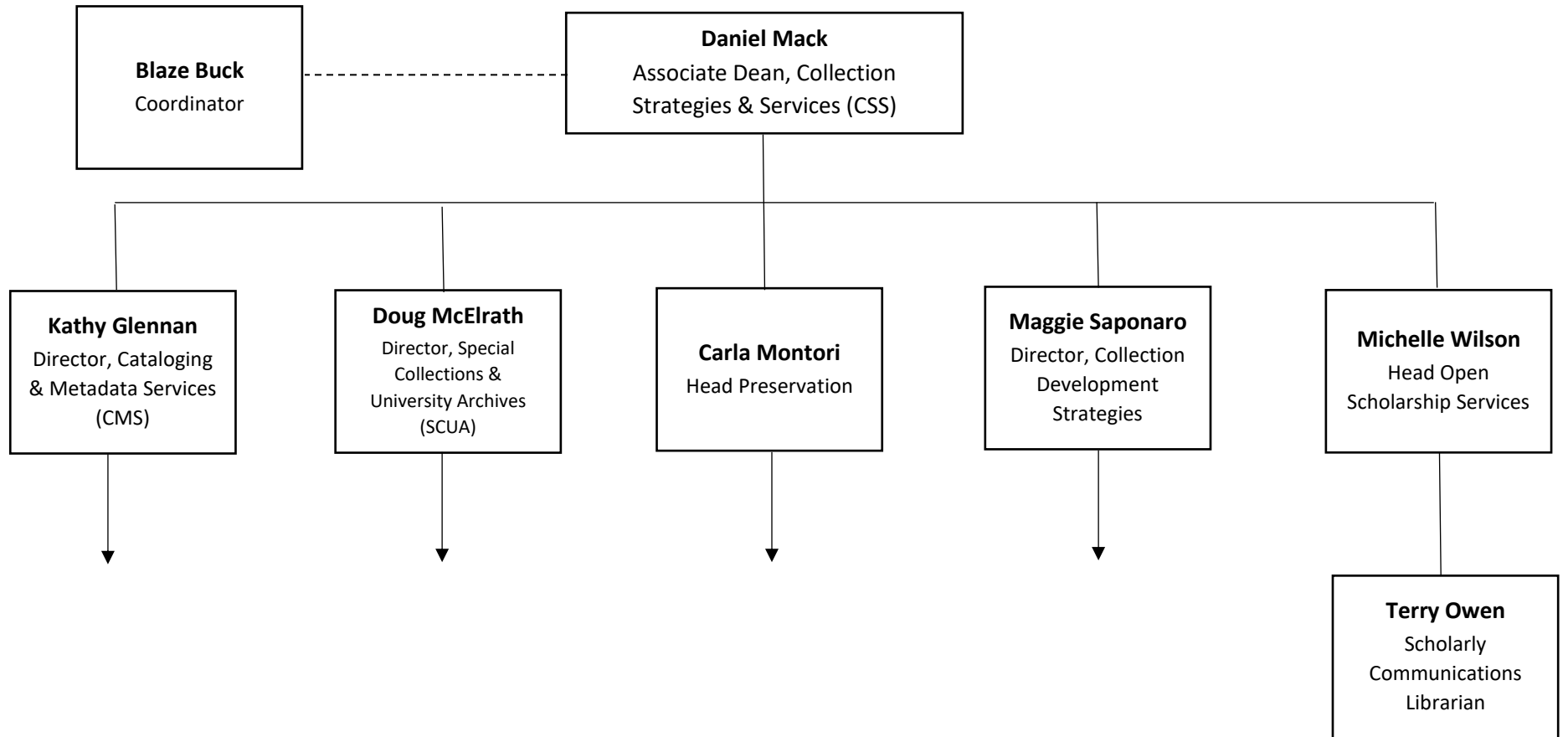
* USMAI Executive Director acts as unit director
** Associate Dean is hiring manager



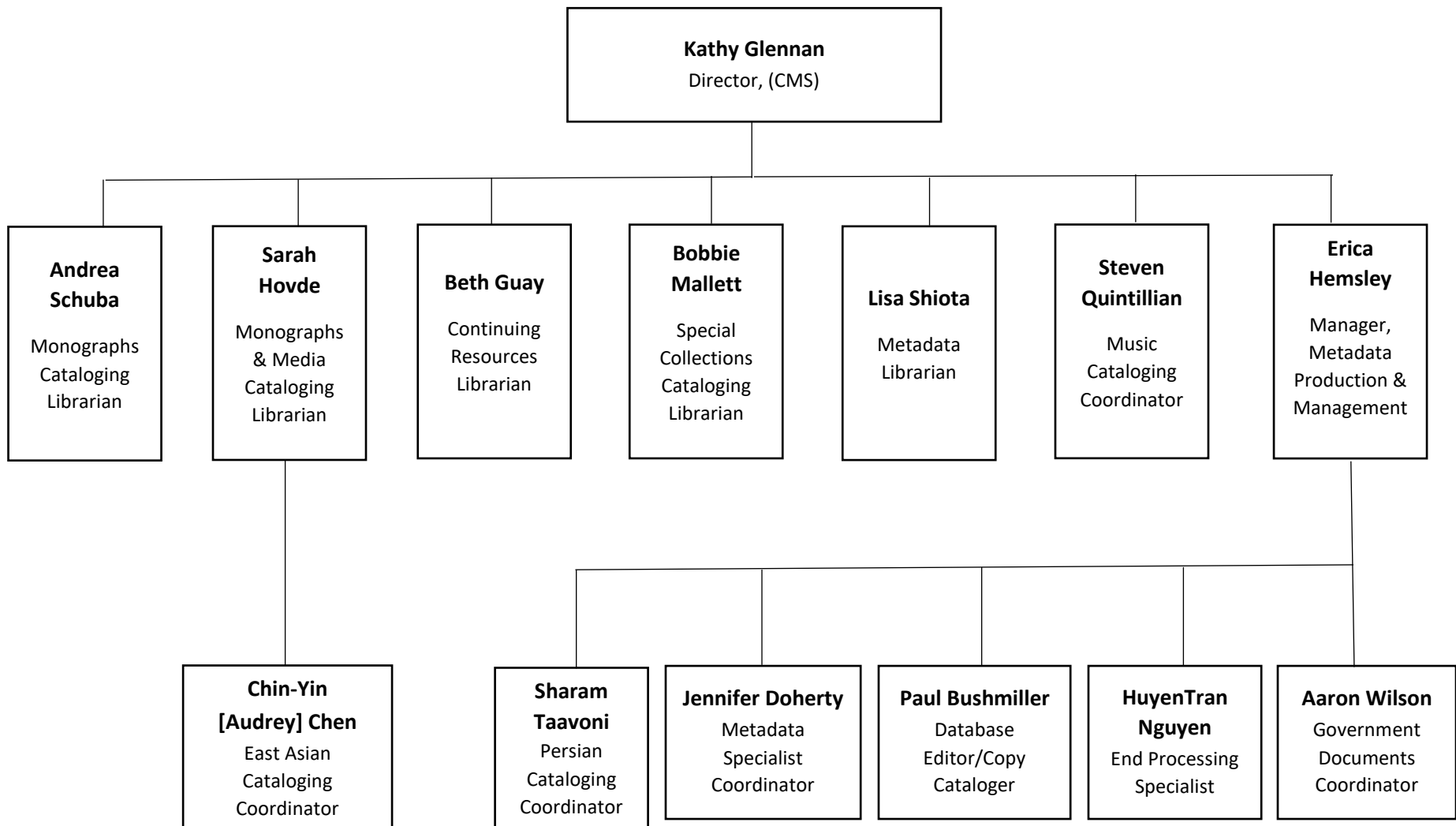


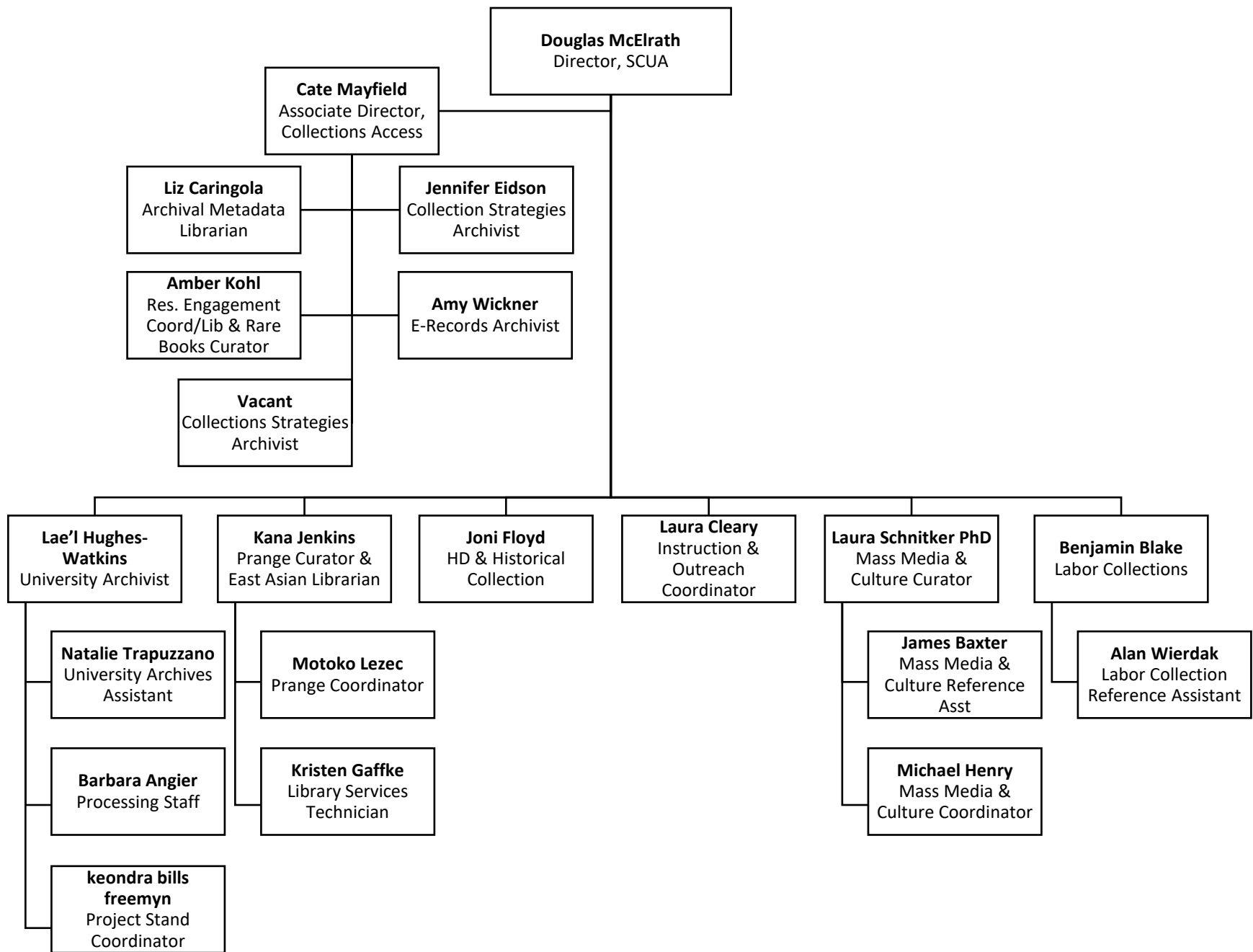


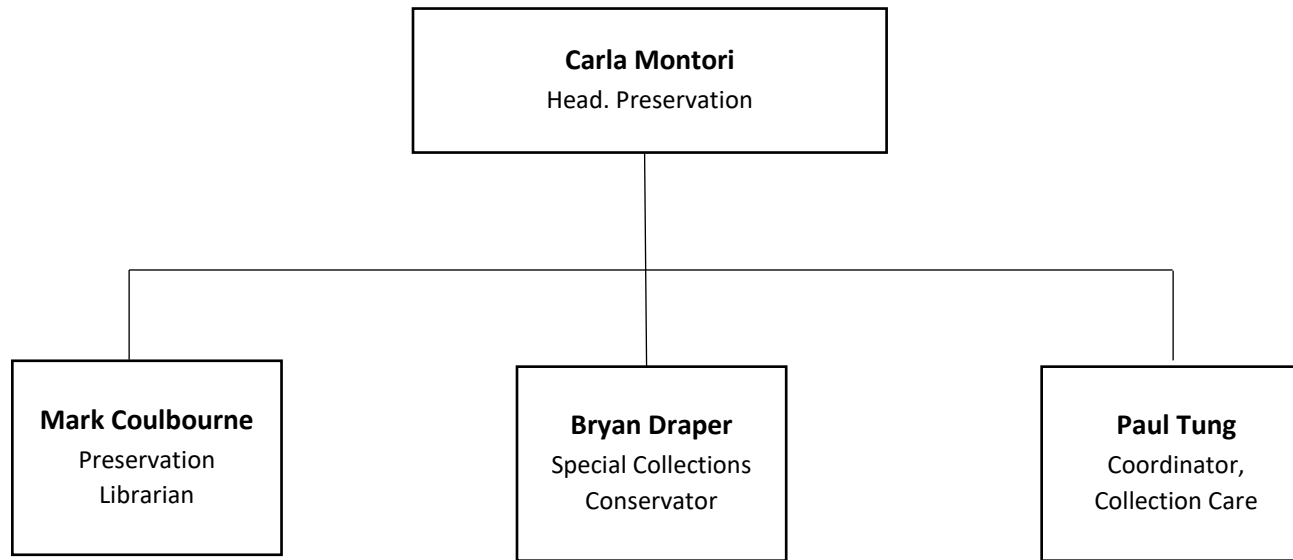
Collection Strategies and Services [CSS]

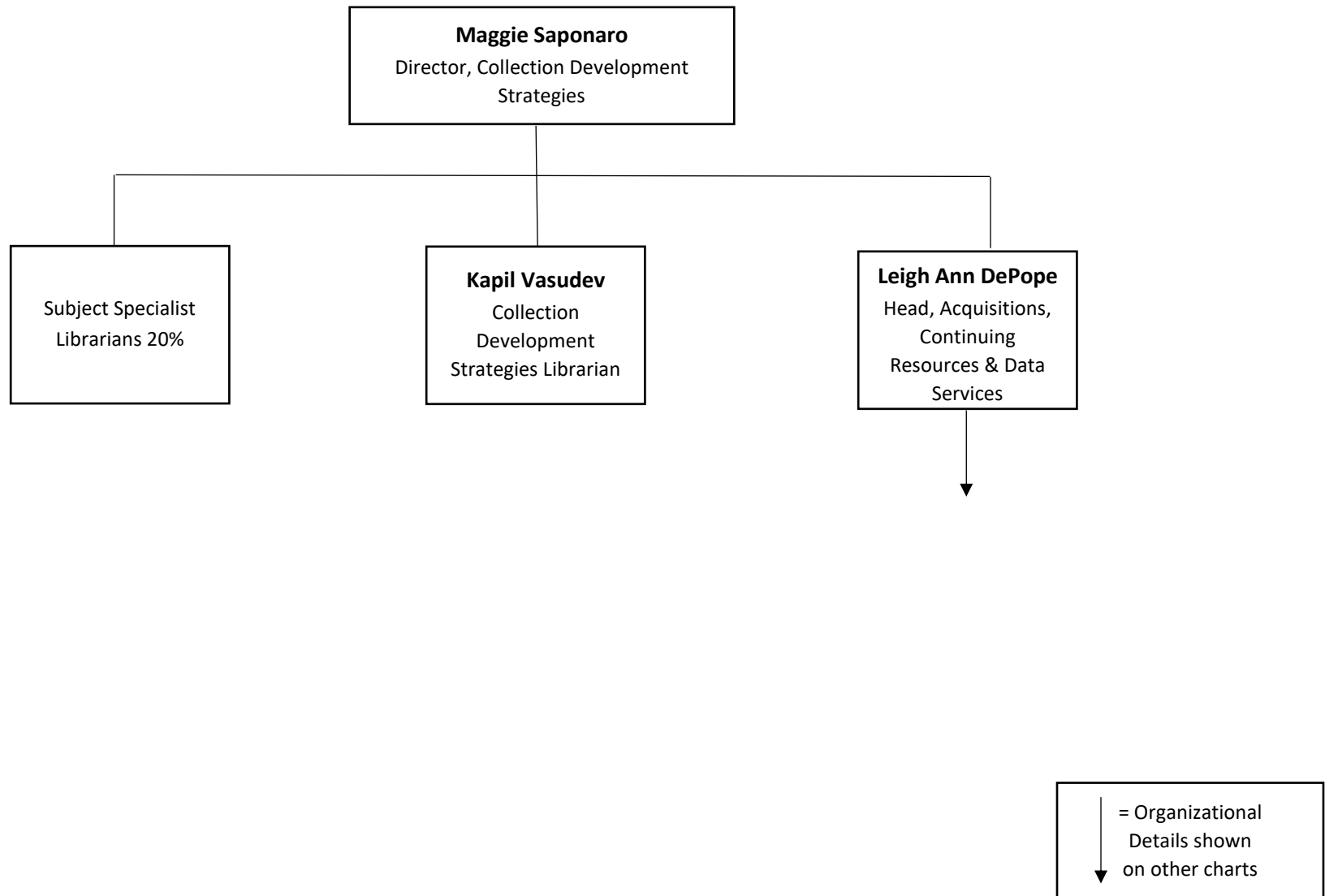


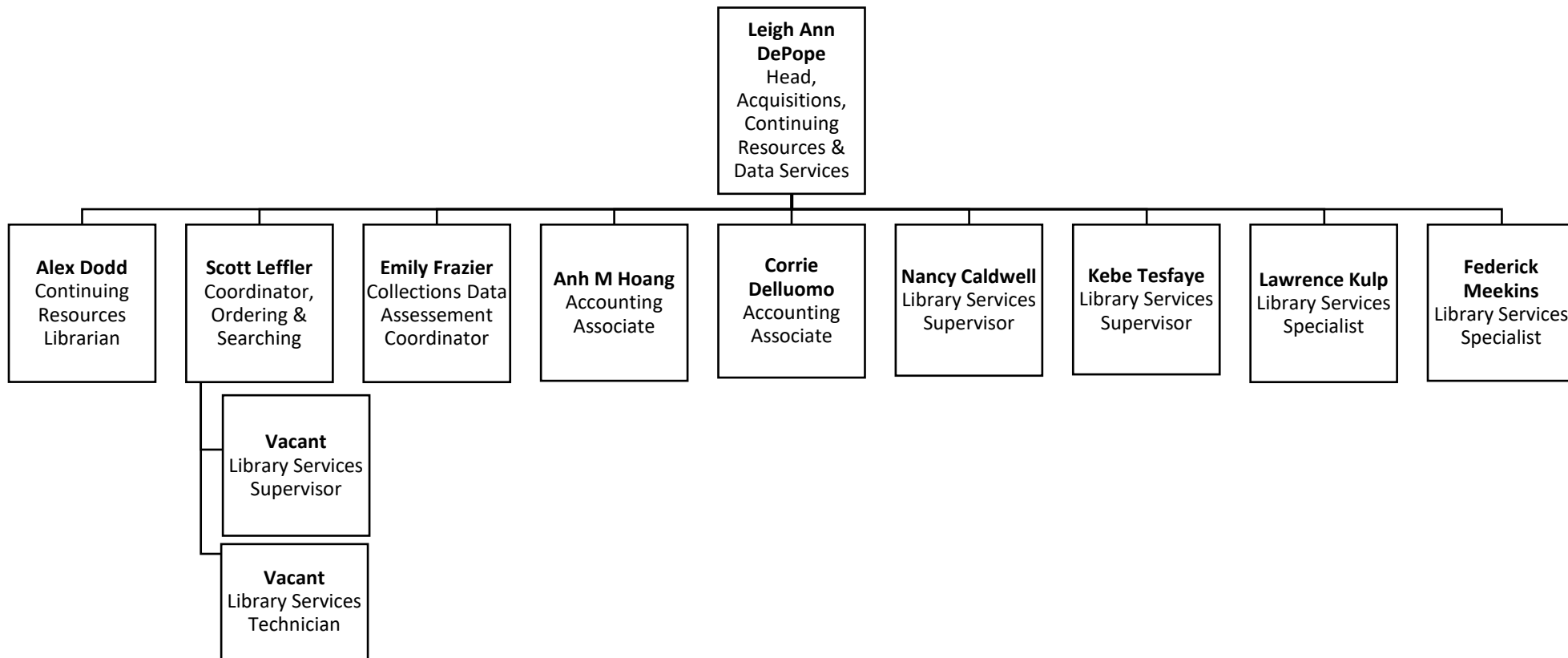
↓ = Organizational Details shown on other charts



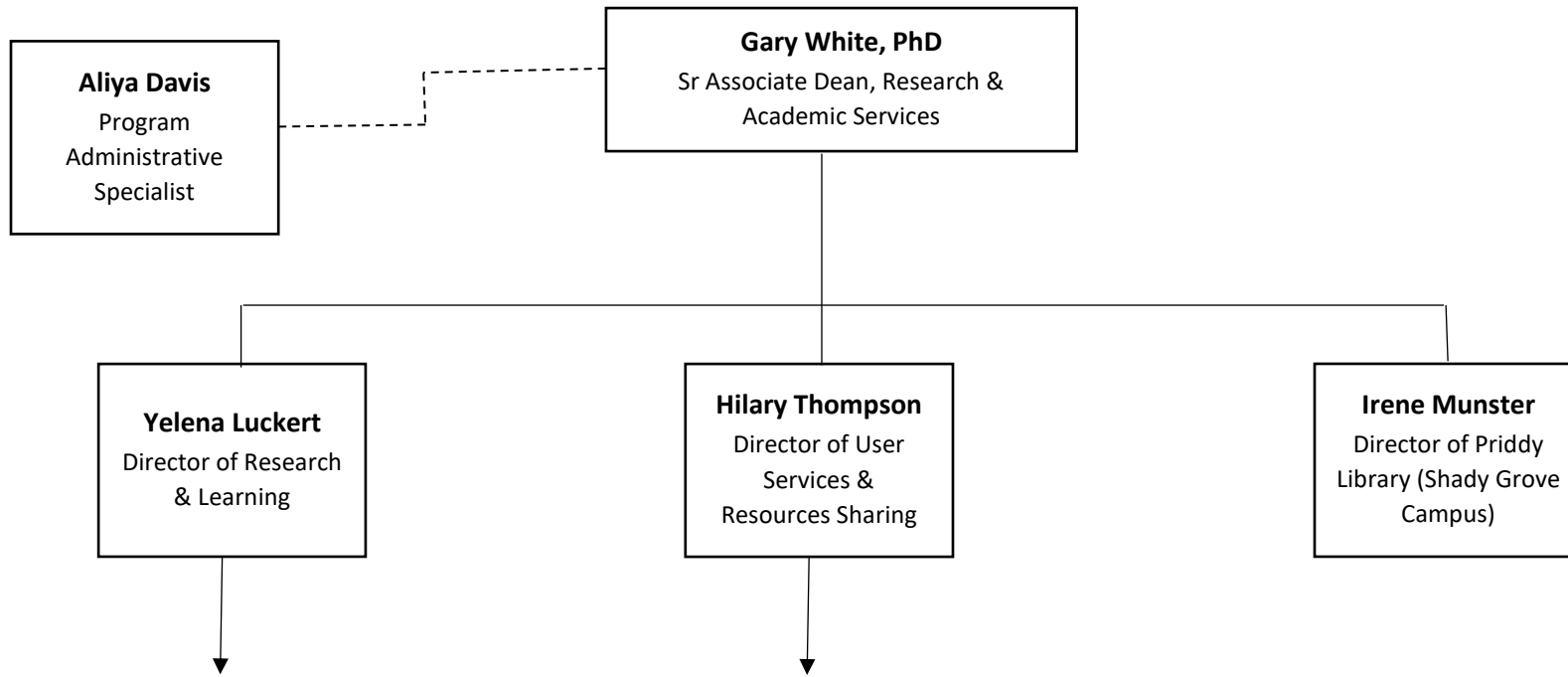




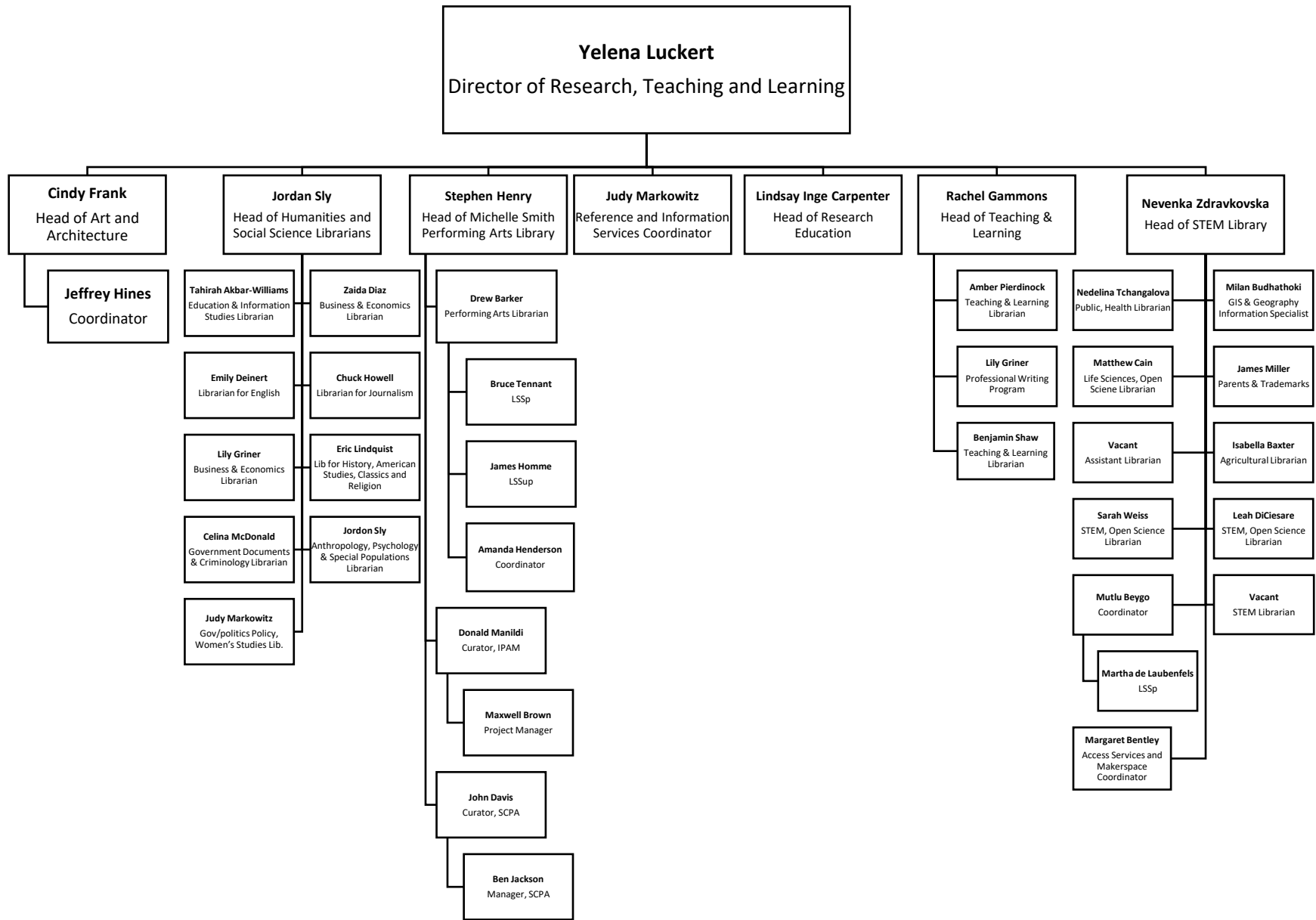




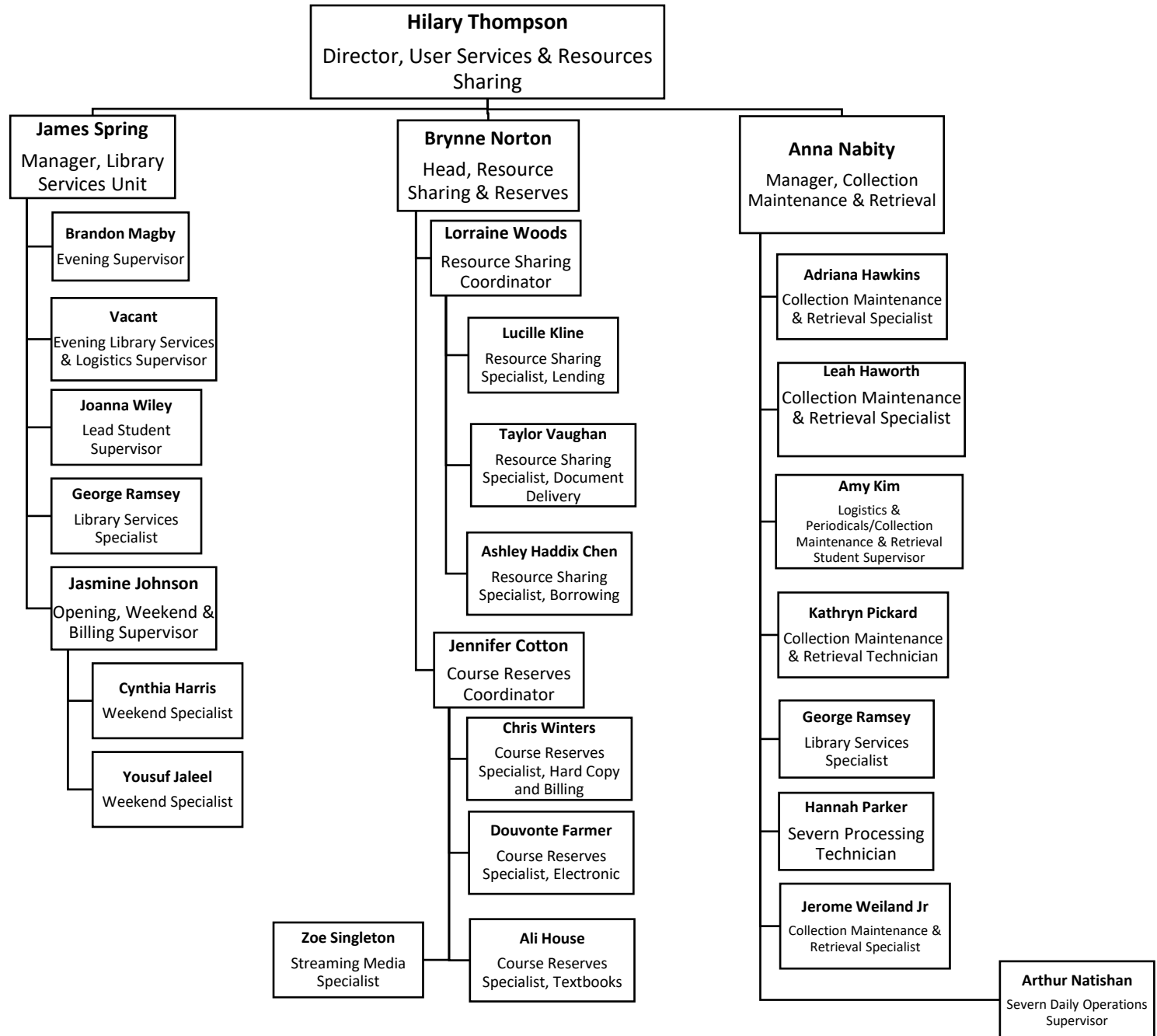
Research and Academic Services [RAS]



↓ = Organizational Details shown on other charts



User Services and Resource Sharing [USRS]



User Services and Resource Sharing [USRS cont]

