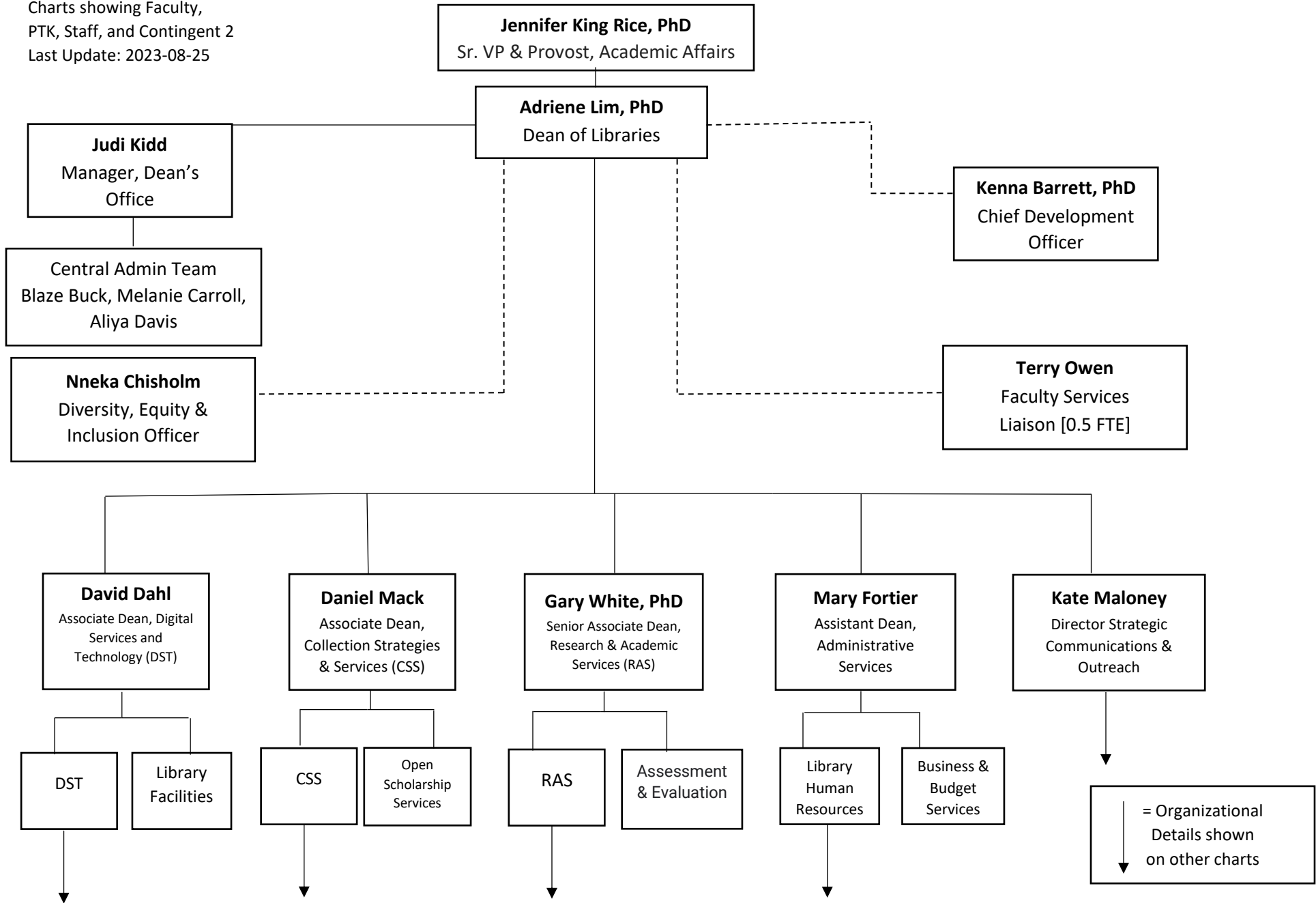
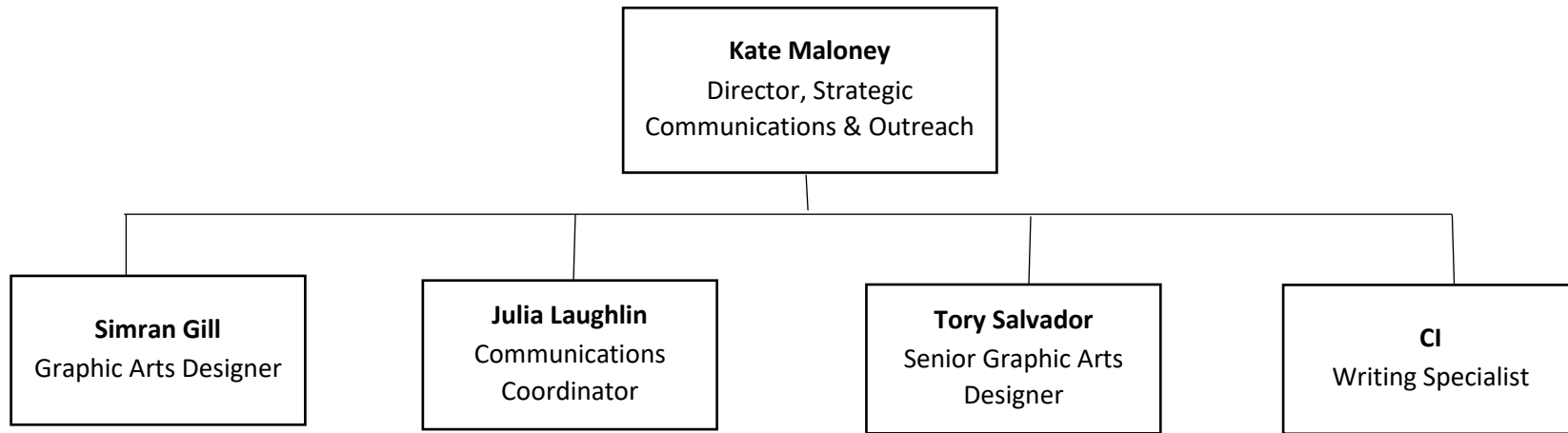


# University of Maryland Libraries Organization Chart

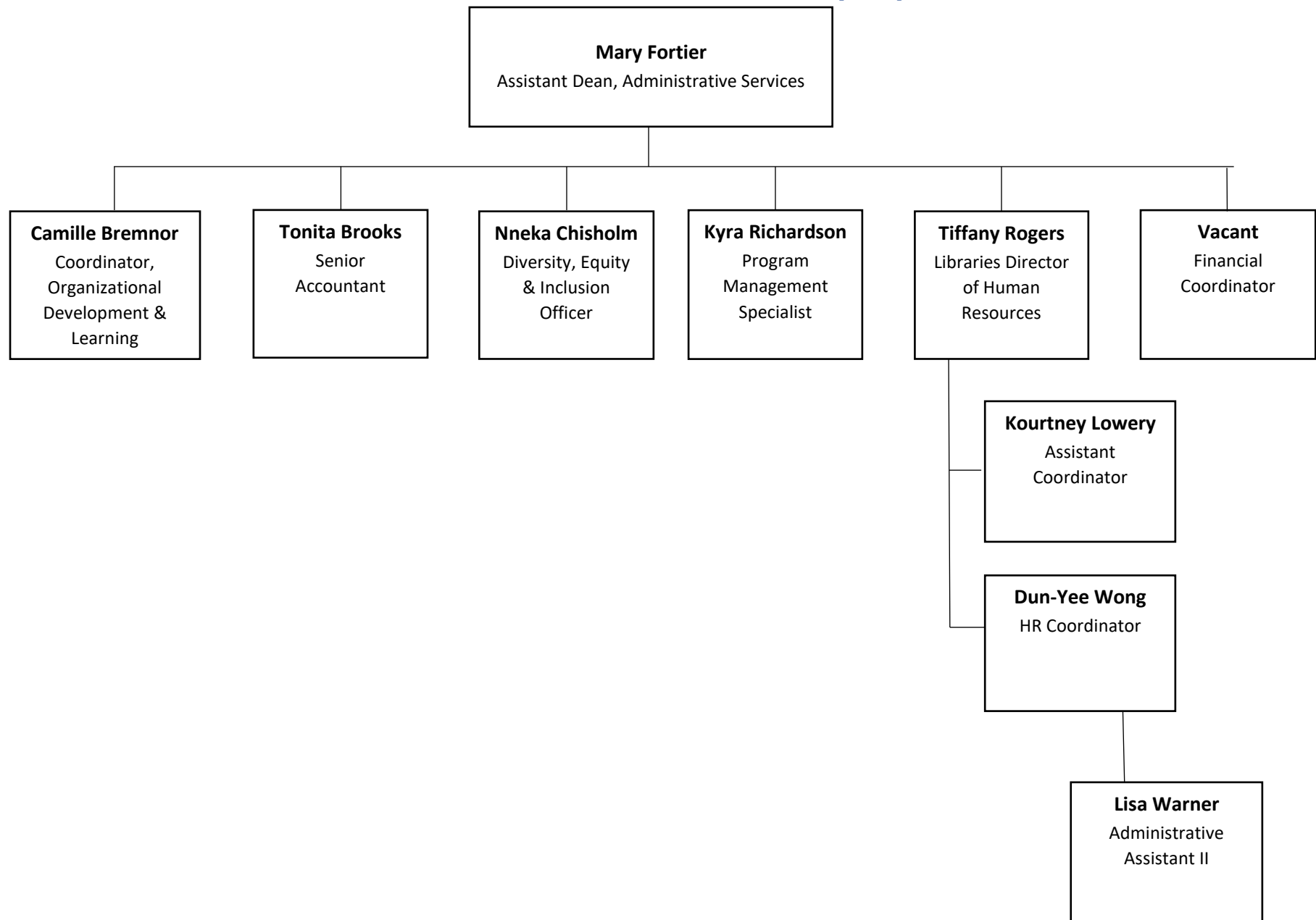
## Dean's Office and Library Administration

Charts showing Faculty,  
PTK, Staff, and Contingent 2  
Last Update: 2023-08-25

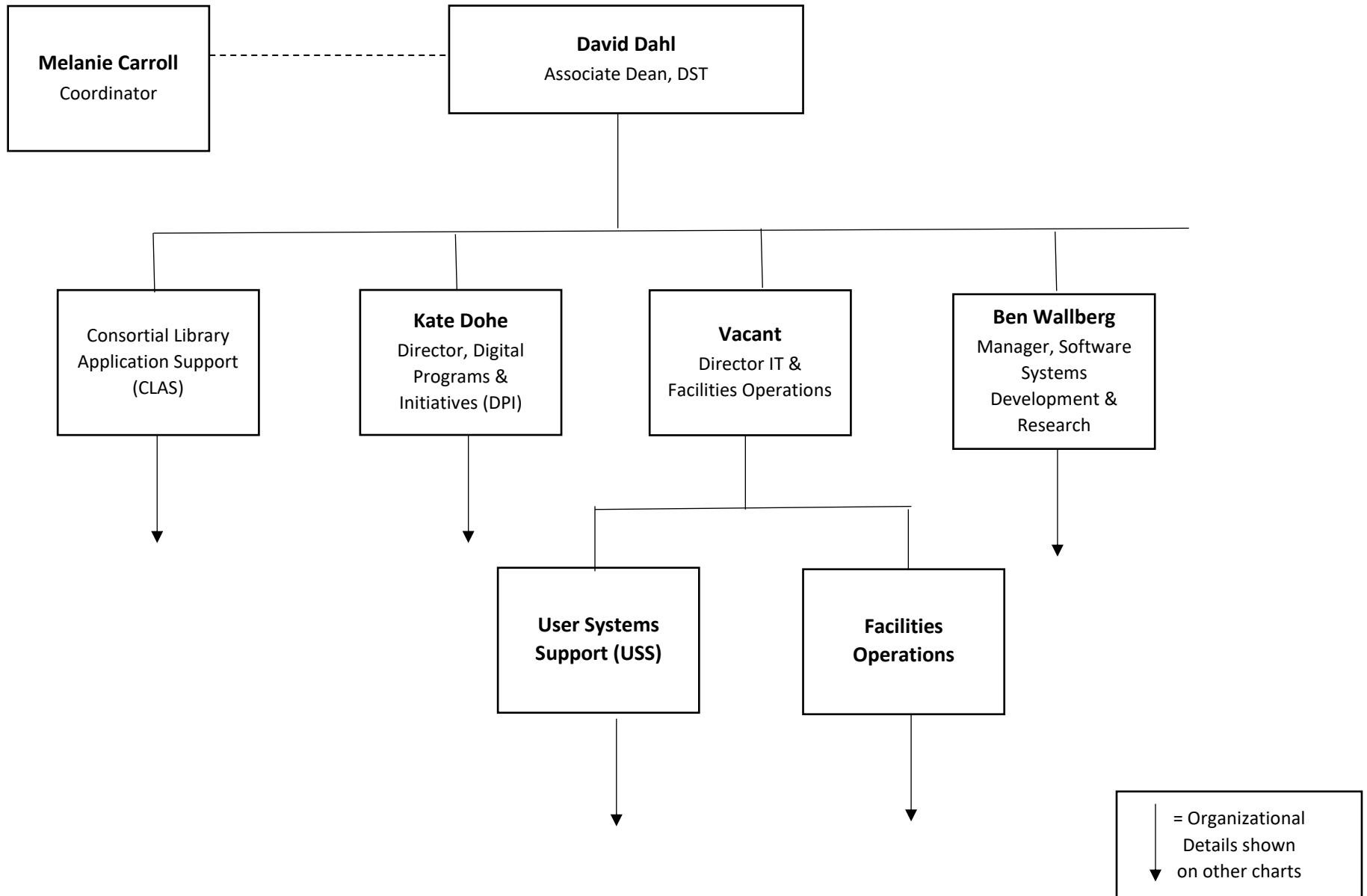




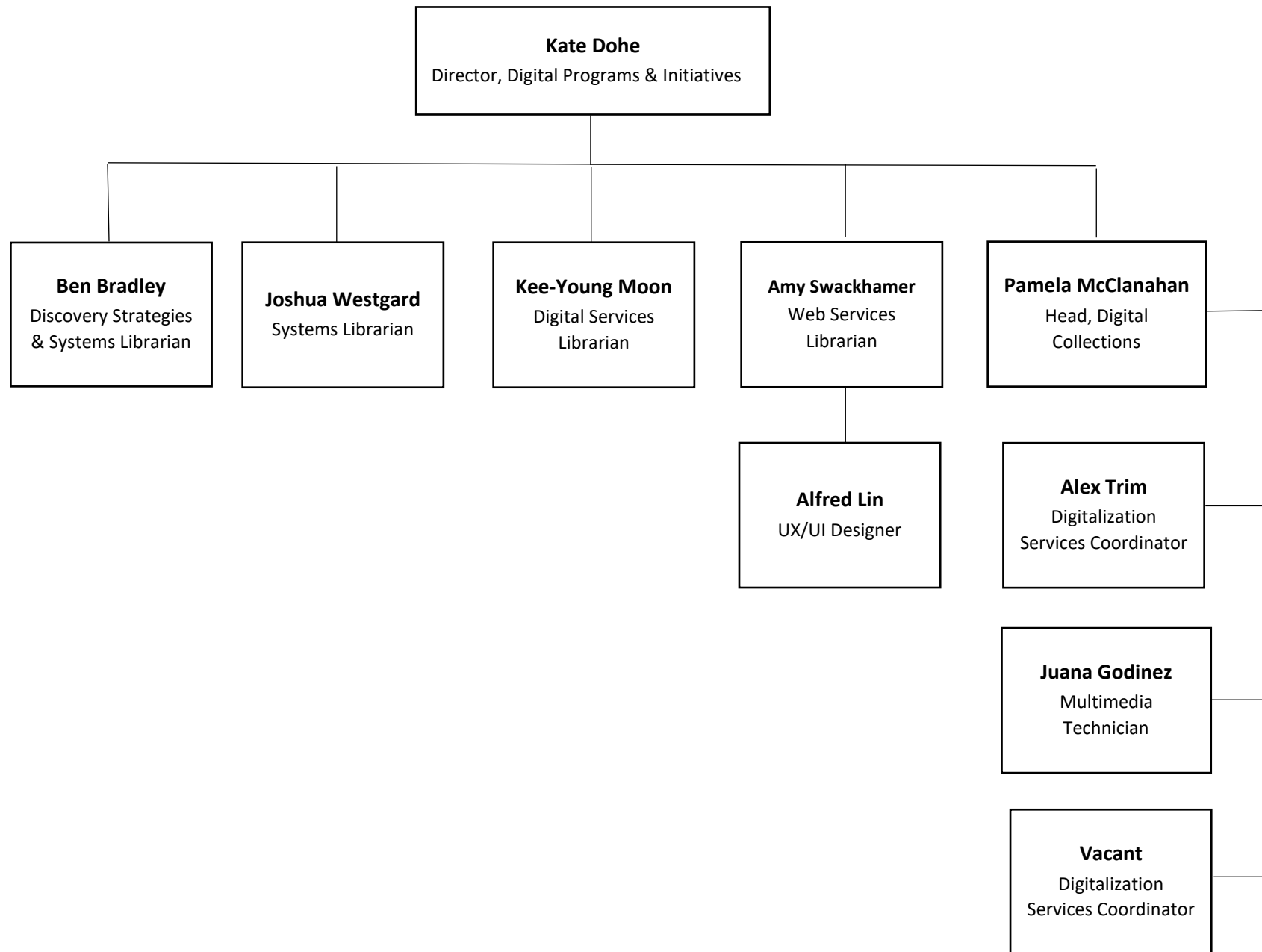
# Administrative Services Division [ASD]

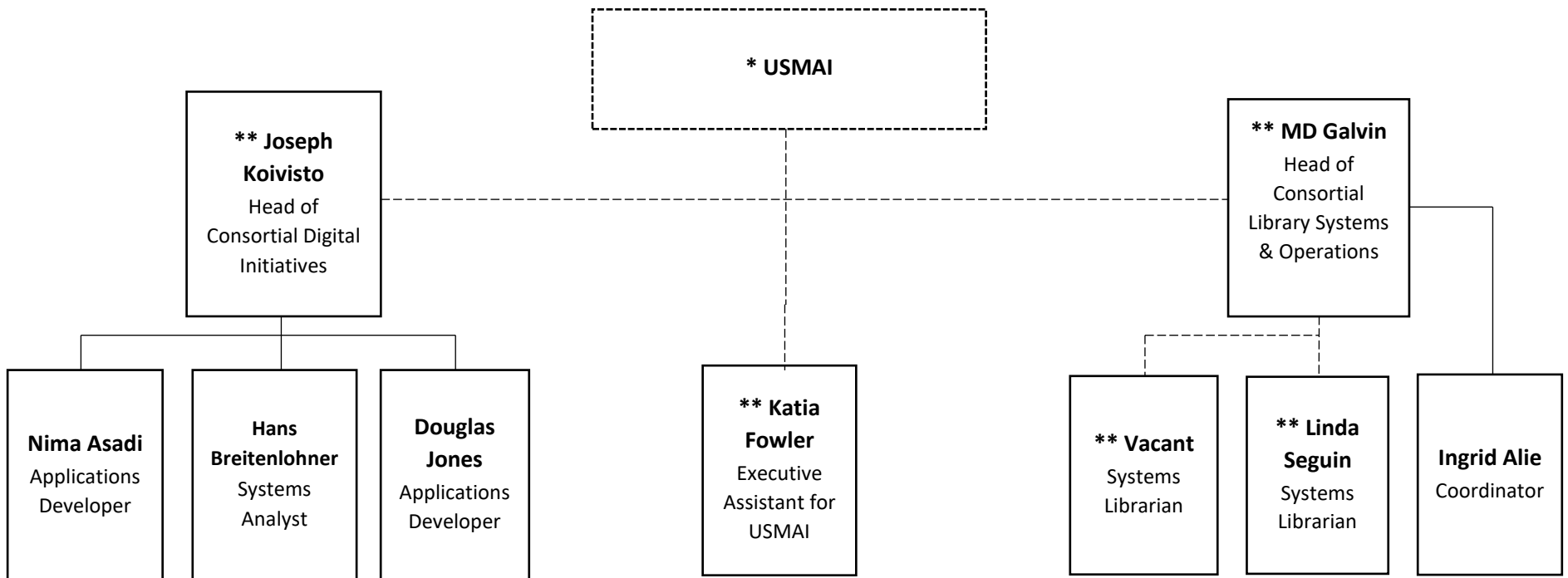


# Digital Services and Technologies [DST]

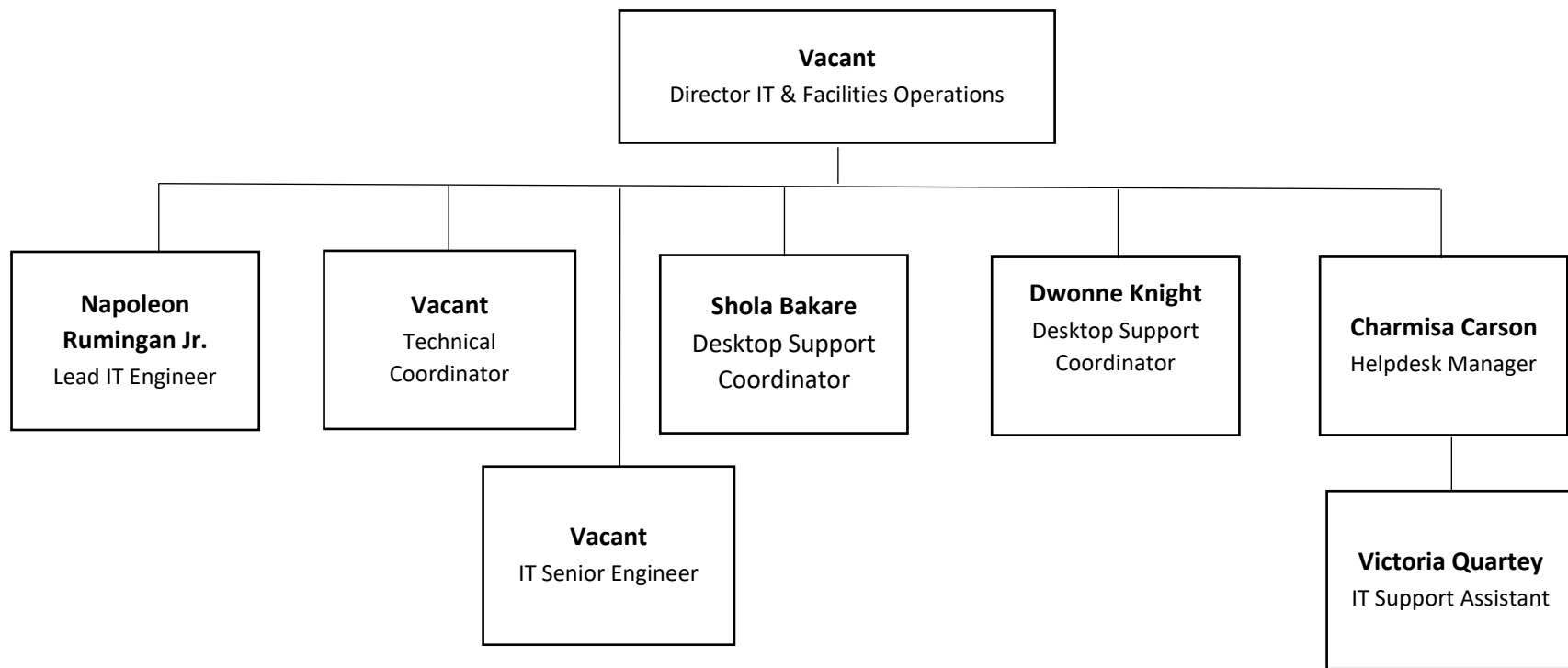


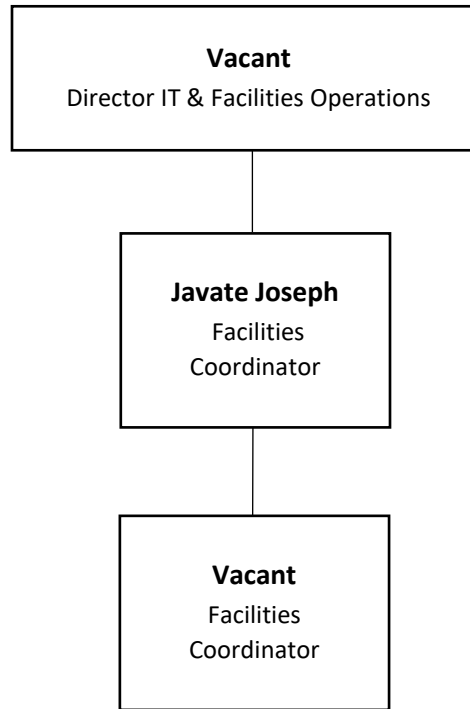
# DST: Digital Programs & Initiatives [DPI]



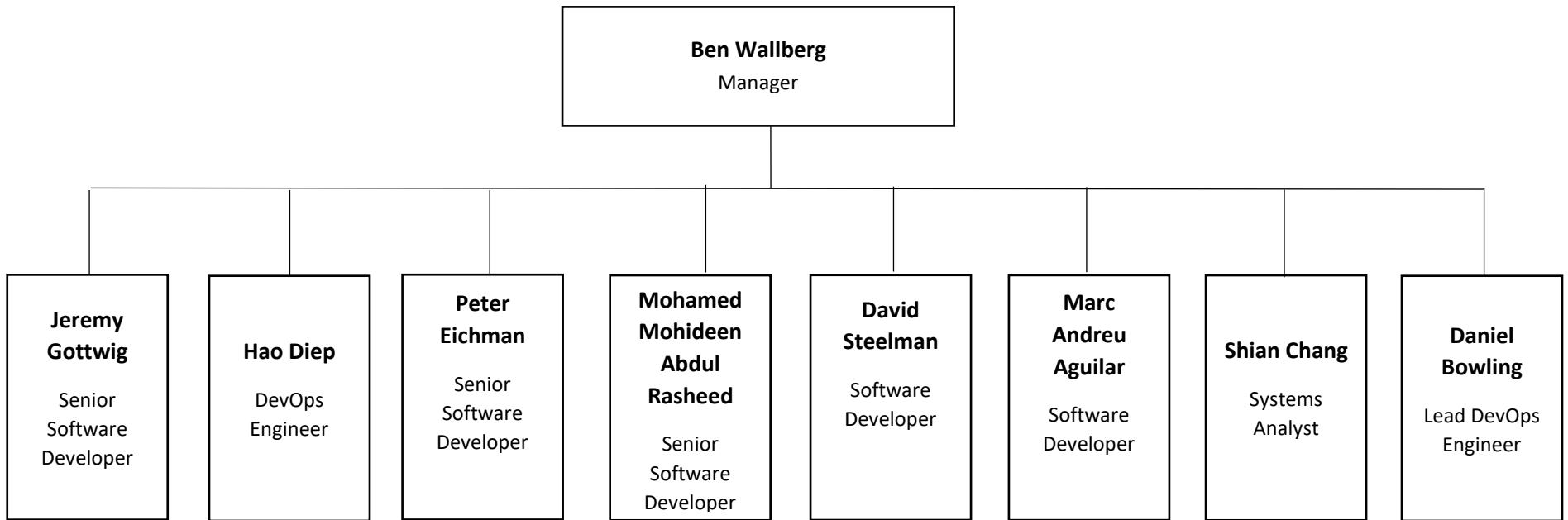


\* USMAI Executive Director acts as unit director  
\*\* Associate Dean is hiring manager

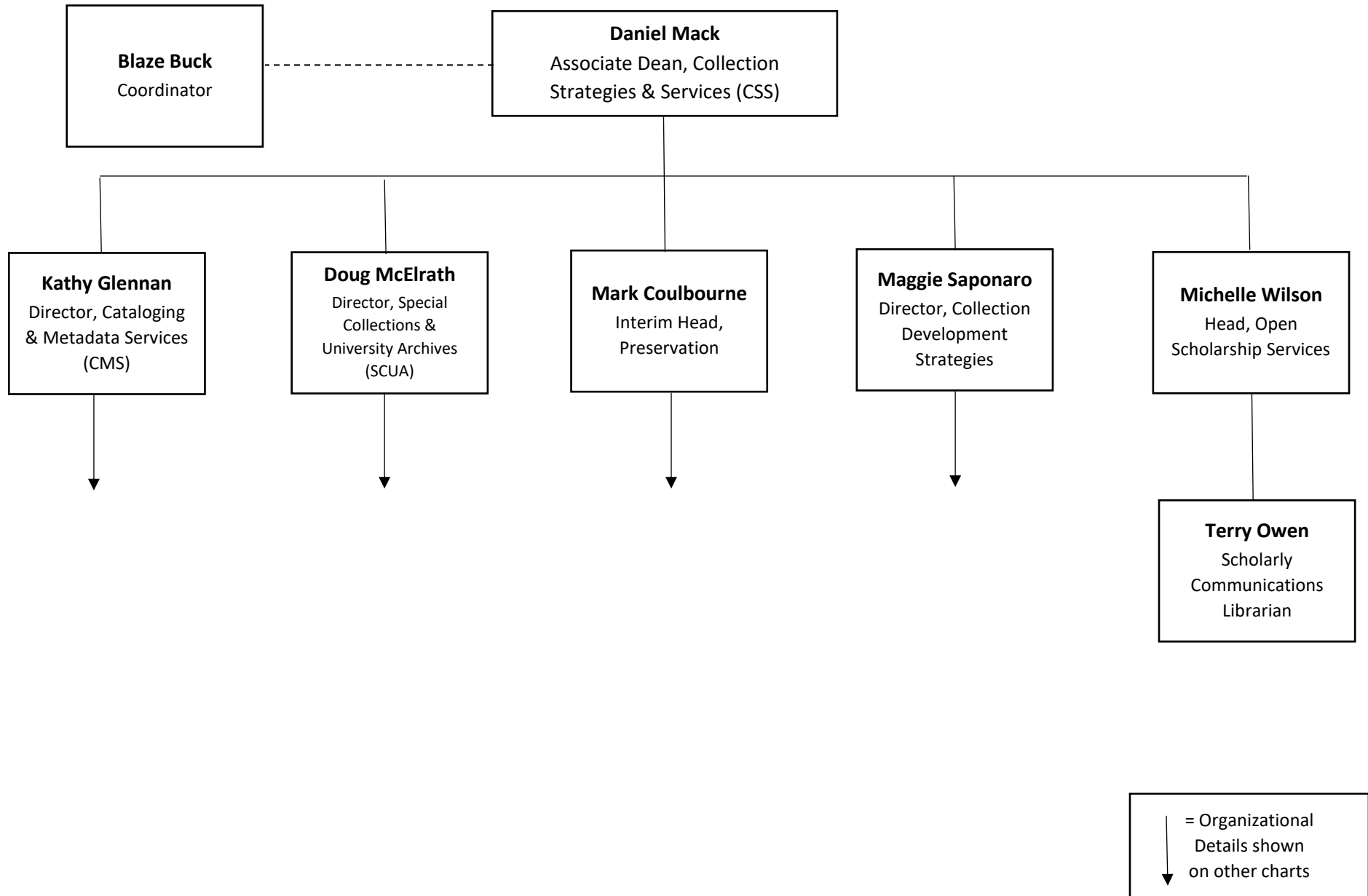


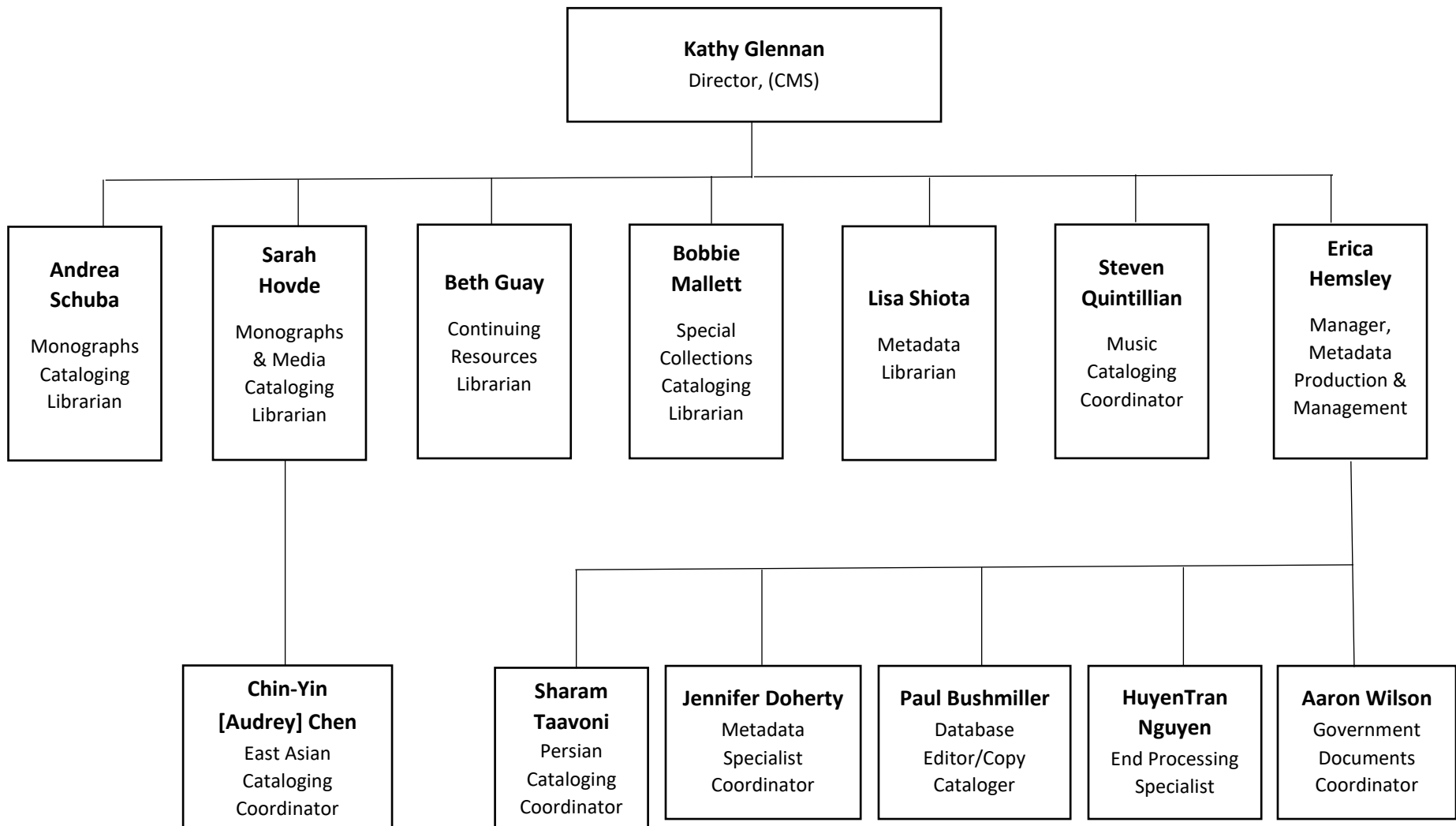


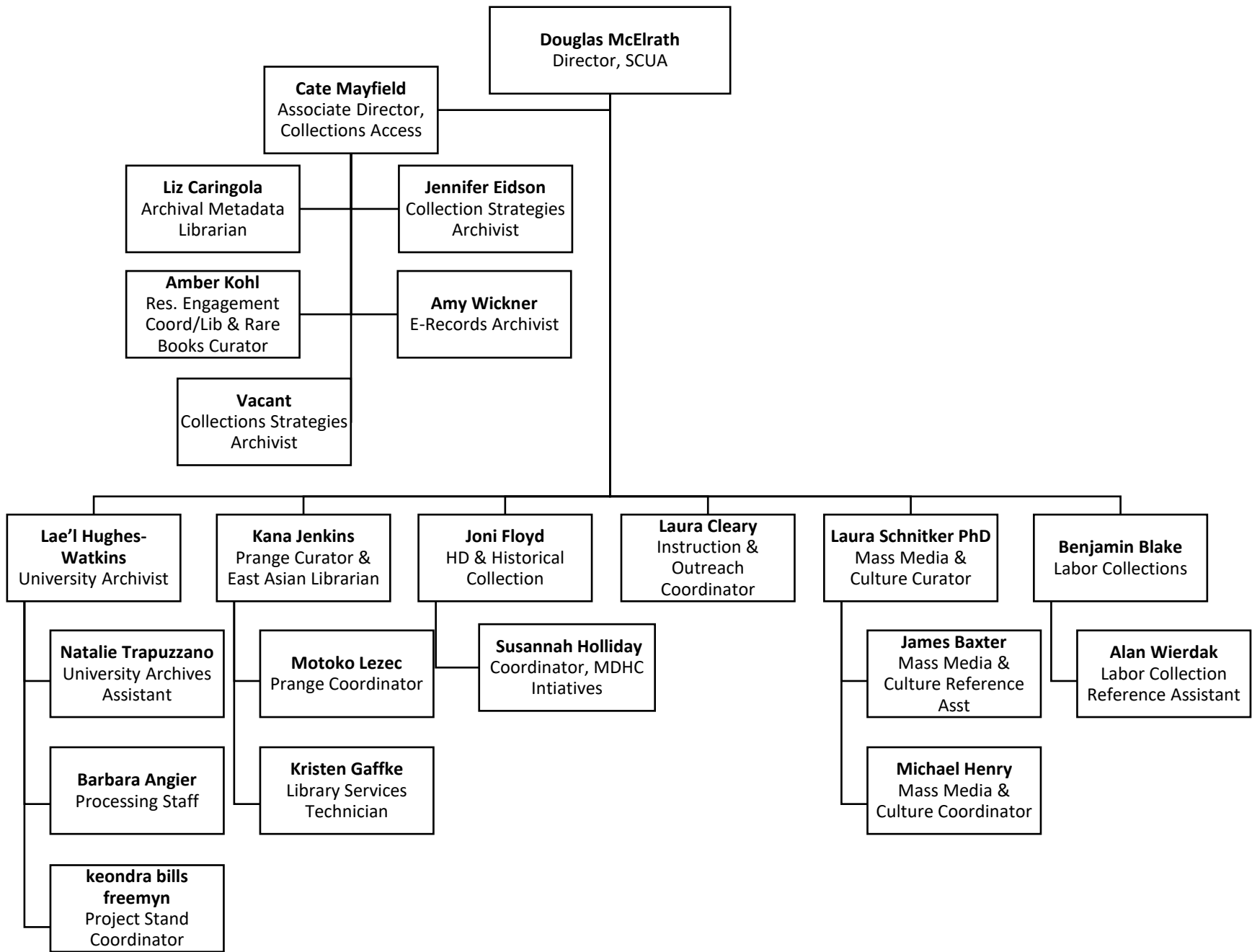


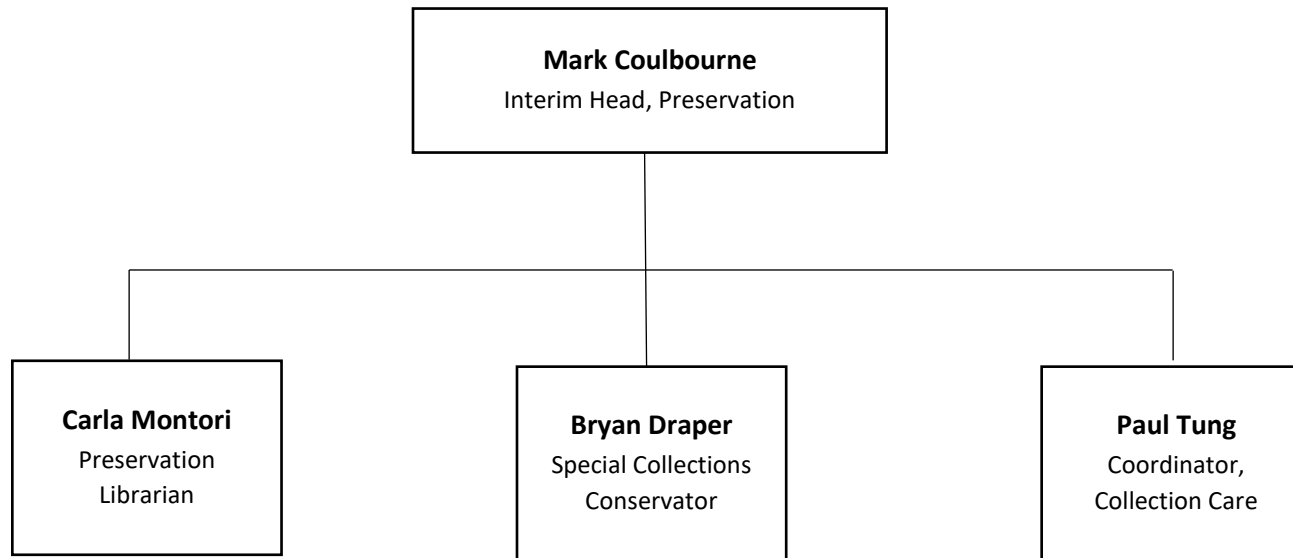


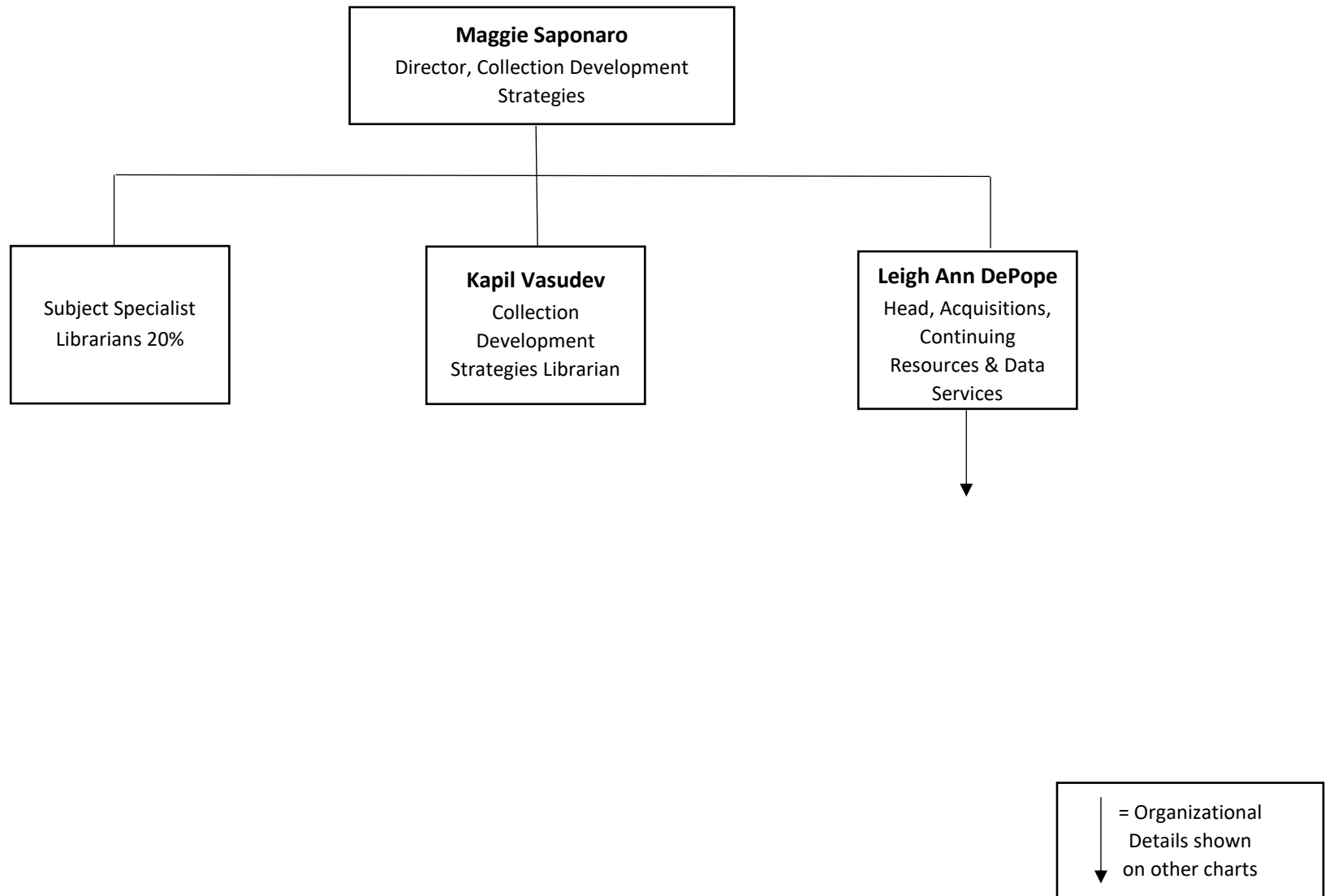
# Collection Strategies and Services [CSS]

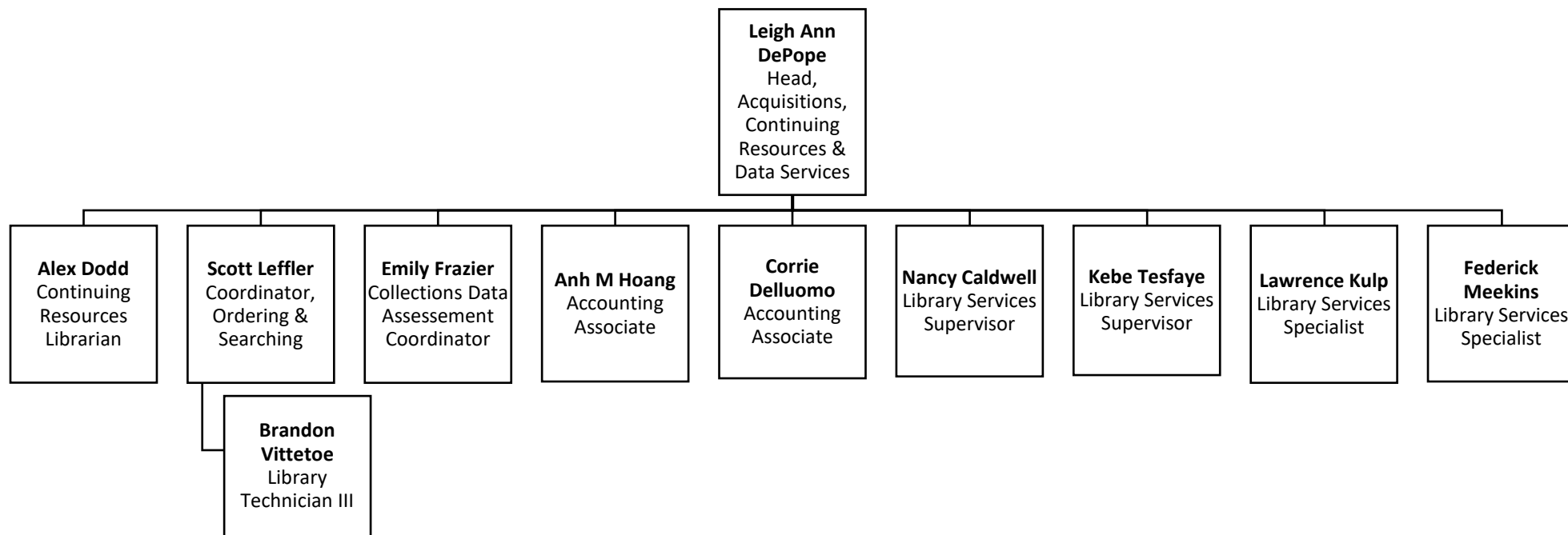




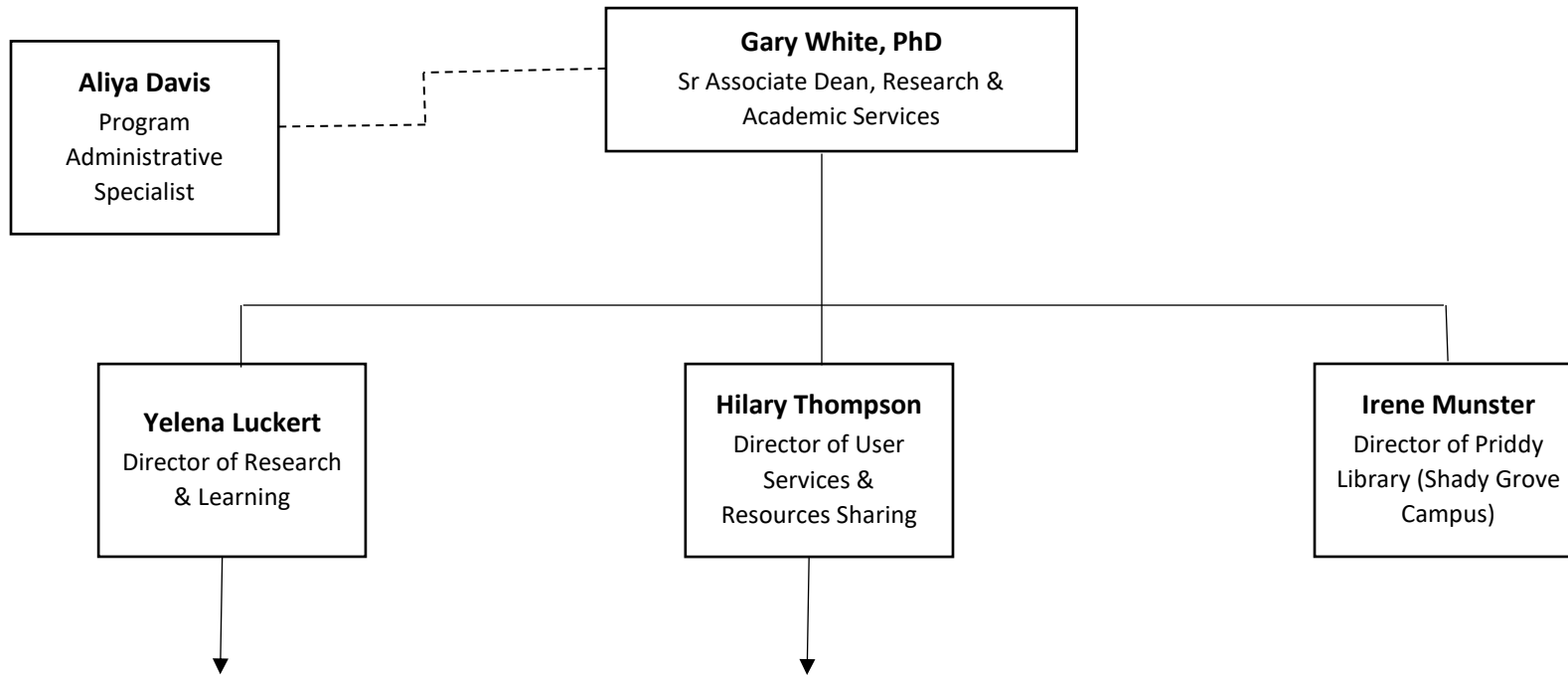






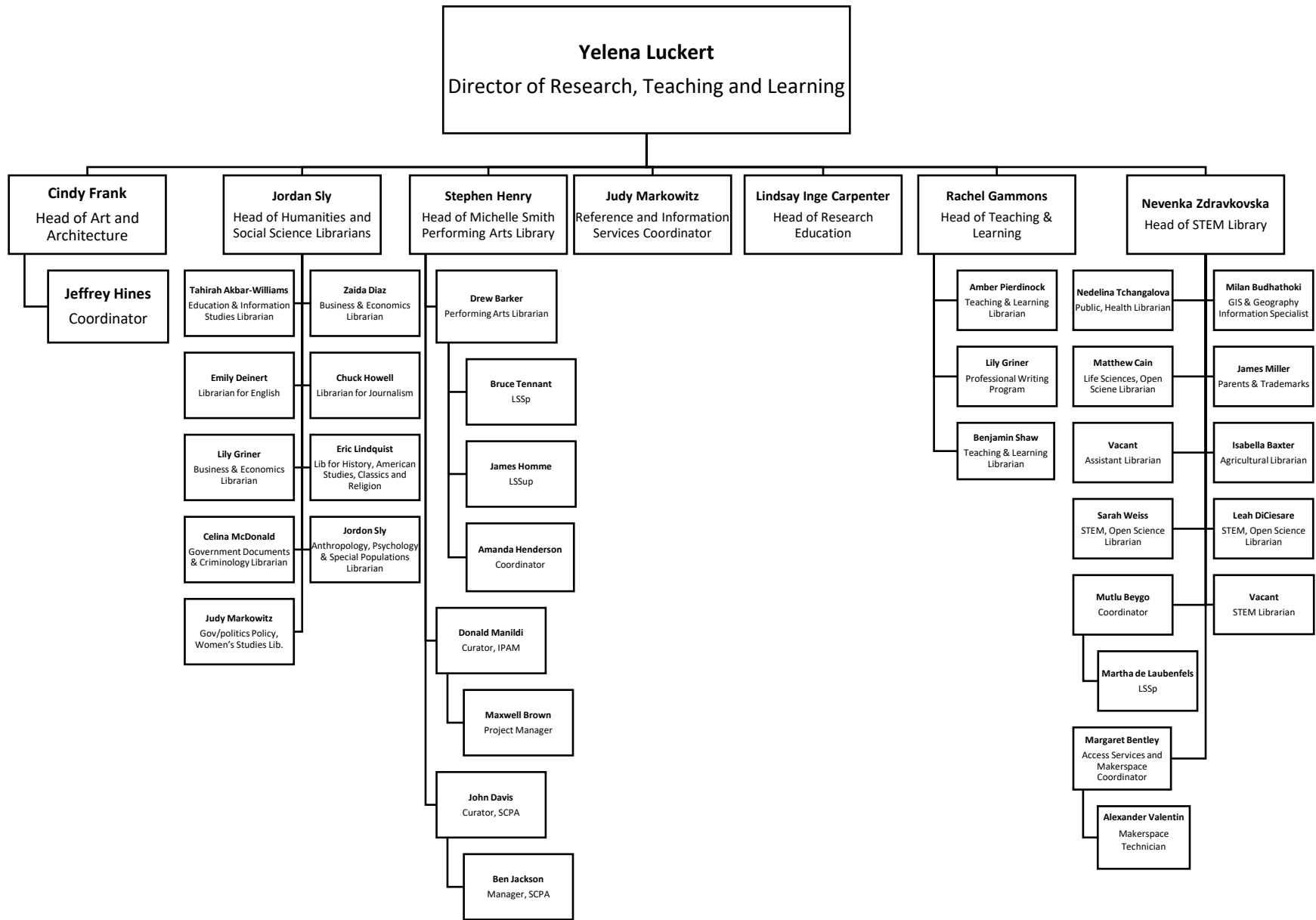


# Research and Academic Services [RAS]

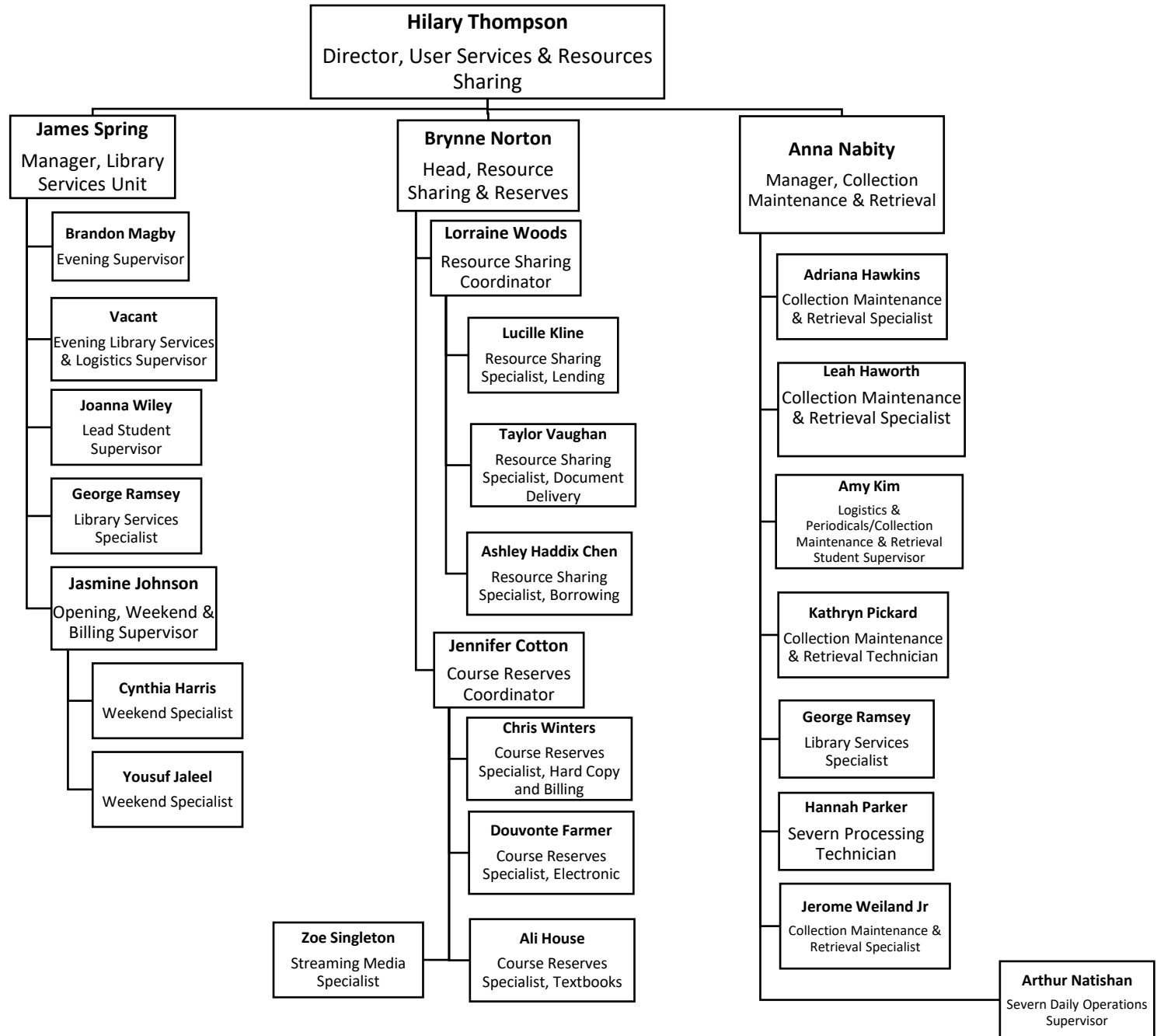


↓ = Organizational Details shown on other charts





## User Services and Resource Sharing [USRS]



User Services and Resource Sharing [USRS cont]

