

# Policy Map

University of Maryland Libraries  
GIS and Spatial Data Center

Julia Bell  
GIS Specialist  
jbell129@umd.edu

Dr. Kelley O'Neal  
GIS Scientist  
kelleyo@umd.edu

# GIS Services in the Libraries

- Workshops - 10 offerings available
  - Geospatial tools in R coming soon
- 1:1 consulting, collaboration
- Customized guest lectures/lab exercises
- Geospatial Researcher in Residence Program
- GIS lab in 4120 open for use during Library hours
- Access to free online tutorials and software trials
- See [www.lib.umd.edu/gis](http://www.lib.umd.edu/gis) for more information

# Add'l Research Services

- Research Commons services:
- General research assistance
  - Proposals, ORAA requirements, presentations, etc.
- Data management
- Statistics consulting
- 3D scanning and printing; video editing
- Funding for open access publishing
- See [www.lib.umd.edu/rc](http://www.lib.umd.edu/rc) for more information

# Workshop Outline

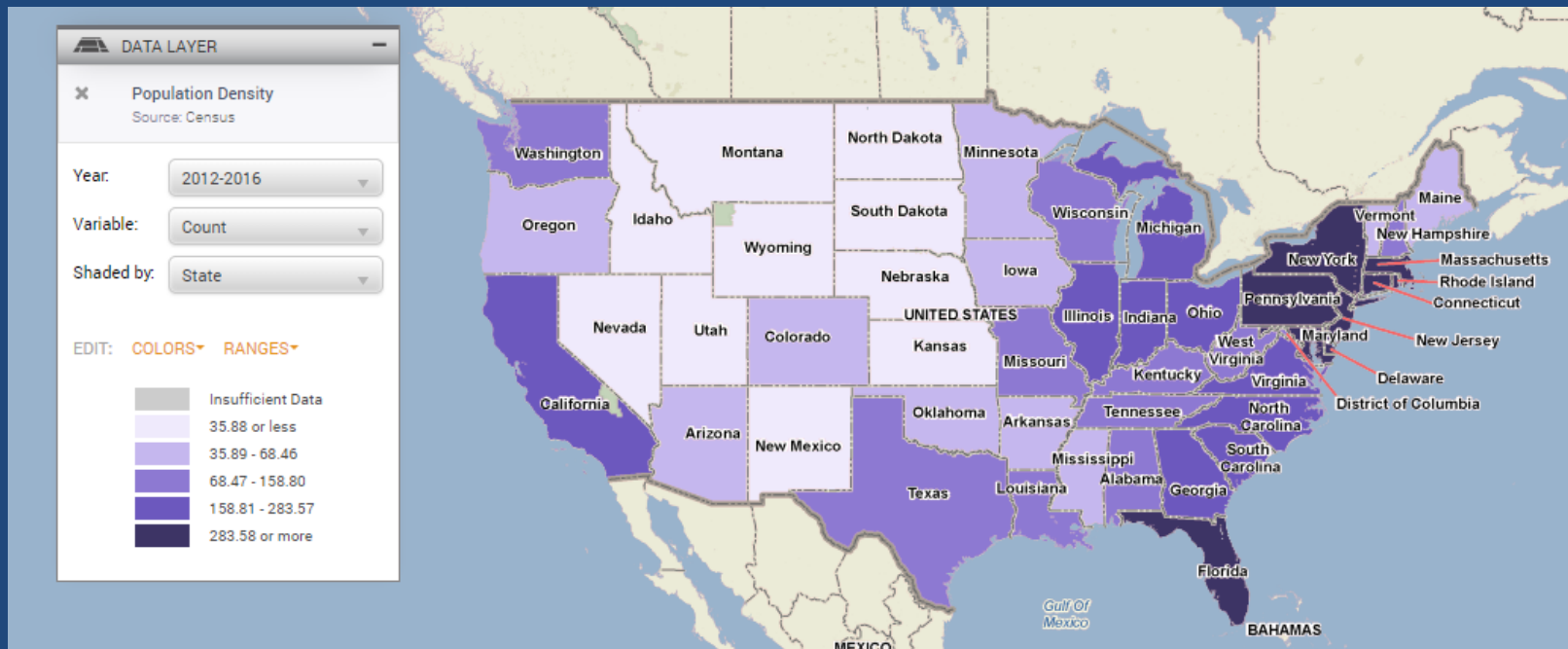
1. Introduction – What is Policy Map?
2. Exercises at your own pace.
3. Questions and concerns throughout – feel free to ask questions at any time!

# What is Policy Map

- PolicyMap offers easy-to-use online mapping with data on demographics, real estate, health, jobs and more in communities across the US.

# Demographics

- An easy tool to create maps to display demographics.



# Other Variables

You can make maps using other variables

Incomes & Spending

Housing

Lending

Quality of Life

Economy

Education

Health

Federal Guidelines

Analytics

# Use Pre-defined Geographies

- Use pre-defined areas such as:
  - Census Tracts and Block Groups
  - Congressional District
  - School District
  - State Districts
  - Metro



# Data

Apart from using data that is already available on Policy Map, you can use your own uploaded data or data shared with you to make maps.

My Data	Demographics	Incomes & Spending	Housing	Lending	Quality of Life	Economy	Education	Health	Federal Guidelines	Analytics
↑ MY UPLOADED DATA			👤 DATA SHARED WITH ME				★ MY FAVORITES			
Created ▾	Name ↕		Created ▾	Name ↕	Author ↕		Name			
11/12/15	CHFA Multifamily Properties 2011 - Q3 2015 Test		05/28/15	PolicyMap College and University Subscribers	Tom Love		Economy > L... > Bachelor's or Advanced Degree			✕
01/15/15	20150115 Limited Service		10/10/12	Houston LIHTC	Kristin Crandall		Education... > At least a Bachelor's Degree			✕
01/15/15	20150115 Full Service		08/21/12	NSP in PA	Maggie McCullough		Education > Population... > Bachelor's Degree			✕
11/05/14	Links for Supermarkets						Education > Populatio... > High School Diploma			✕
08/27/14	Street						Education > P... > High School Diploma or More			✕
03/28/14							Education > Populatio... > 9th Grade			✕
03/19/14	CRFUSA-Investment Area List						Education > Populati... > Post Graduate Degree			✕
02/26/14	Investment Maps-DCED (Statewide/Multi-County) (01)						Educat... > Some College or Associate's Degree			✕
02/26/14	Investment Maps-DCED (Countywide) (201401)						Education > Population... > Some High School			✕
02/26/14	Investment Maps-DCED (2013-Present)						Housing > Home Sales > Sales and S... > Annual			✕
	Investment Maps-DCED						Housing > Homeowners > Number of Home... > All			✕
							Housing > Renters > Cost Bu... > 2010-2014 ACS			✕
							Housing > Rents and Rental Un... > Median Rent			✕
Upload										

# Print, Share, and Email Maps

### Export as an image

**Export**

**Filename**  
PolicyMap Map

**Text size** Aa Aa

Landscape  Portrait

PDF  PNG

**Title**  
Estimated typical (med...

**Include legend(s):**  
 Median Household Income

**More options +**

#### Estimated typical (median) income of a household between 2009-2013.

Estimated median household income in the past 12 months, as reported between 2009-2013. A household includes all the people who occupy a housing unit as their usual place of residence. Medians were suppressed in cases where the sample of the average was less than 10 of the unit that is being described (e.g. households, people, households, etc). Such areas are represented as having "insufficient data" in the map. ACS employs values to indicate top and bottom ranges of income. A value of 250,000 indicates a value of 250,000 or greater, whereas a value of 2,499 indicates a value of 2,500 or less.

**Median Household Income**  
Year: 2013  
Shaded by: Block-Group, 2010

- Insufficient Data, 2010
- \$32,500 or less
- \$44,310 - \$44,318
- \$56,810 - \$56,809
- \$77,189 - \$77,188
- \$77,189 or more

Source: Census

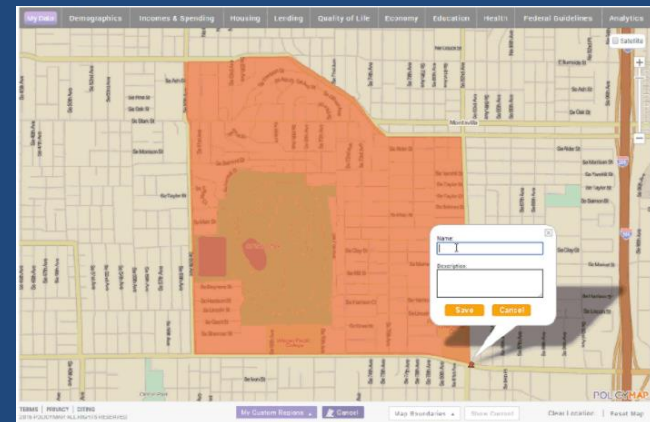
**More options +**

# Download Data

- **Download Data** – gives users the ability to download any public data currently loaded.
- There are 3 different types of data that can be downloaded:
  - Layer which is data aggregated to geographies like tracts, counties, and states,
  - Points which is address level data,
  - Points with Layer Data which is the ability to download address/point data joined to a geography and layer data.

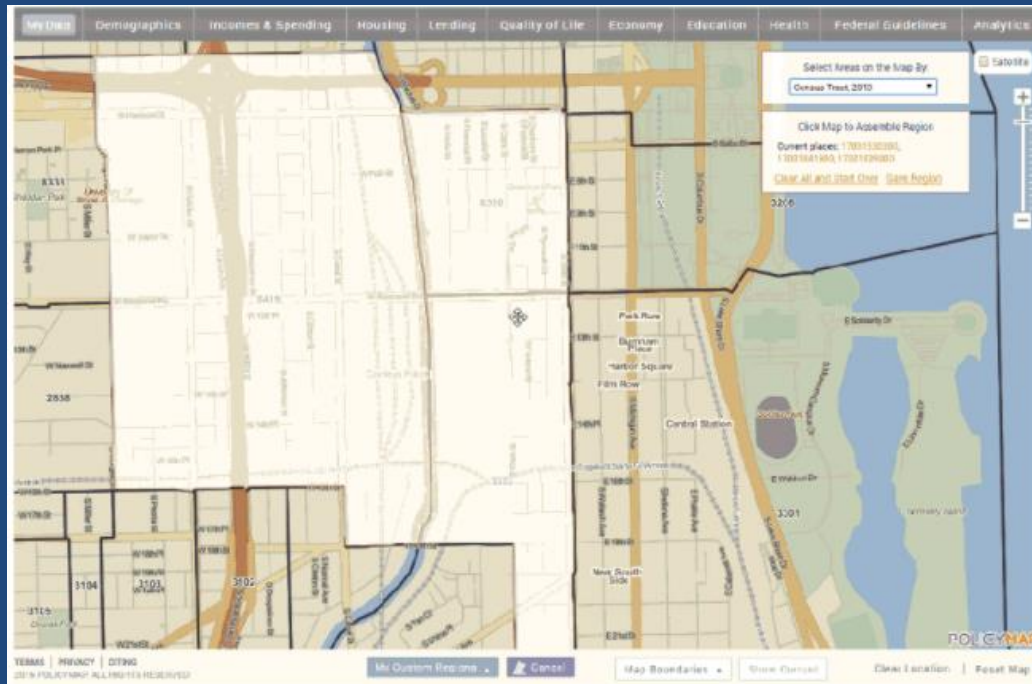
# Custom Regions

- Policy Map allows users to define their own custom regions
- Drawn custom regions can cross predefined geographic boundaries like census tracts, zip codes, and counties.



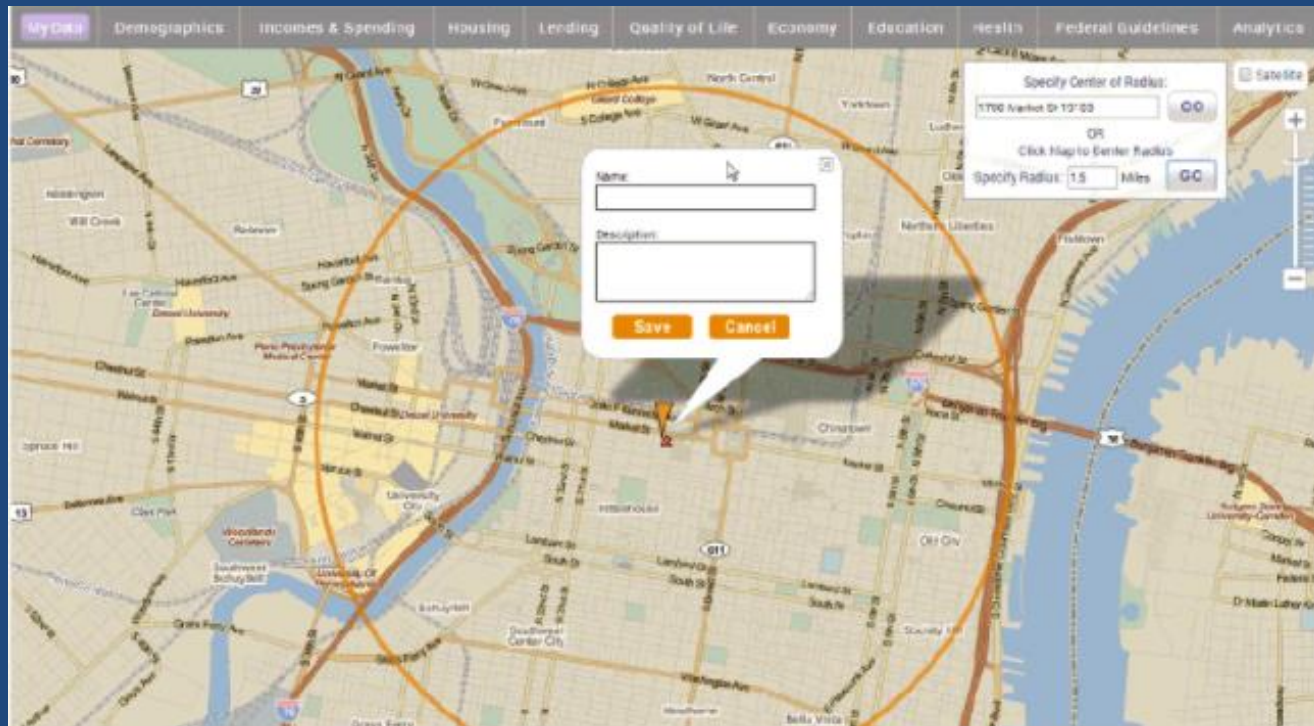
# Assembled Custom Region

This gives you the ability to select and group geographies (e.g. census tracts, or zip codes) to create a custom region.



# Radius Region

This allows you to create a radius boundary. You can enter a specific address as the center of the radius or click on the map to identify the center.





# Tables

- The Tables feature allows you to view data as a bar graph or chart, that can then compare data across multiple geographies; unlike the Maps feature which demonstrates a visual comparison of data across neighboring communities and borders.

# See Values feature

- Users can download a spreadsheet of data for any location from the Tables page. This allows you to download all the values of data for all the geographies that make up an area; for instance, you can see all the values of each county in a state, zip codes in a city, census tracts in a county, etc.



# See List feature

- The See List feature will display all the addresses from a point dataset that are contained in a geography. Users can then download a CSV file which will contain all the data for the site.

# Reports

- Using the Reports feature, users can generate a detailed report for a pre-defined location, radius around an address, or custom region.
- All reports use the latest data available in PolicyMap, so what you see on the maps and tables, can quickly be turned into a report.

# 3-Layer Maps

- 3-Layer Maps is a neighborhood search tool allowing you to find places that match one or up to three criteria of data on a map.
- The 3-Layer Maps tools can be used to download a list of addresses which fall within one or multiple criteria or a list of places that met the criteria set.

**Let's Go!**

**ArcGIS Exercises**

**[lib.umd.edu/gis/workshops](http://lib.umd.edu/gis/workshops)**